



# SUBMITTAL/TECHNICAL DATA SHEET

**Door and Frame** shall be 16 gauge galvanized steel with a prime coat finish.

**Frame** is a one piece construction 1" wide and produces perfect concealment of the rough wall openings. Wall frame is provided with 1/4" mounting holes for fastening within the furred spaces allowing faster installation and giving maximum clearance.

**Hinge** is a concealed continuous piano hinge.

**Latch** is screwdriver operated.

**Finish** is a prime coat suitable for painting.

SKU: **VB**  
**VALVE BOX**



## DIMENSIONS AND APPEARANCE

>> CLICK TO VIEW ADDITIONAL DETAILS AND PRICING <<

## GUIDE SPECIFICATION

Valve Box (specify model number and options) access door and frame shall be fabricated from 16 gauge, galvanized steel with a prime coat finish. The door shall have rounded safety corners and a concealed continuous piano hinge. Frame shall be one piece construction with no mitres or welds on the face. Latch shall be screwdriver operated. Elmdor Valve Box shall be fully enclosed with 16 gauge, galvanized steel with a prime coat finish. Finish shall be a prime coat suitable for painting.

## MODEL NUMBER AND OPTIONS SELECTION

### BASE MODEL NUMBER

☐ -VB Valve Box

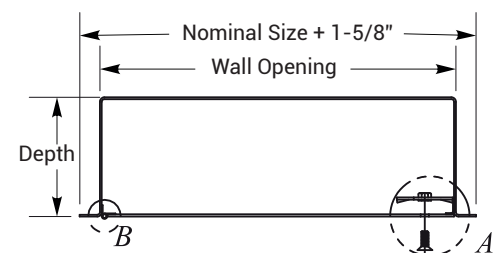
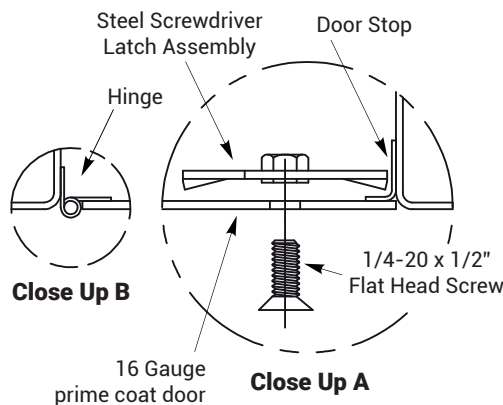
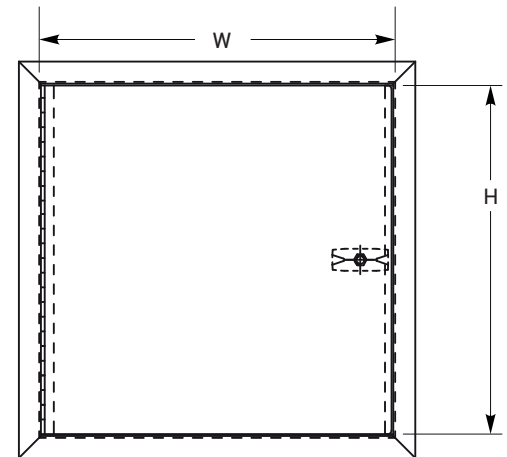
### SUFFIX OPTIONS

- ☐ -AKL Allen Key Latch
- ☐ -CL Cylinder Lock
- ☐ -CLD Cylinder Lock with Dust Shutter
- ☐ -SS Stainless Steel Construction. (Type 304 No. 4 Satin Finish)
- ☐ -TH T Handle

For a complete list of options visit  
[www.AccessDoorsAndPanels.com](http://www.AccessDoorsAndPanels.com)



### STANDARD SIZES:

DOOR SIZE (W x H)	WALL OPENING	LATCH	WEIGHT LBS
VB 8" x 8" x 4"	8-1/2" x 8-1/2"	1	10.0 LBS.
VB 8" x 8" x 6"	8-1/2" x 8-1/2"	1	12.0 LBS.
VB 12" x 12" x 4"	12-1/2" x 12-1/2"	1	18.0 LBS.
VB 12" x 12" x 6"	12-1/2" x 12-1/2"	1	20.0 LBS.
VB 14" x 14" x 4"	14-1/2" x 14-1/2"	1	26.0 LBS.
VB 14" x 14" x 6"	14-1/2" x 14-1/2"	1	28.0 LBS.
VB 16" x 16" x 4"	16-1/2" x 16-1/2"	1	32.0 LBS.
VB 16" x 16" x 6"	16-1/2" x 16-1/2"	1	34.0 LBS.



## PROJECT DATA

Custom Sizes Available - Fast!

Scan  or  Click



To view Pricing and  
Additional Product Info.

PROJECT NAME :	QTY	W	H	OPTIONS
ARCHITECT :				
DEALER :				
CONTRACTOR :				
LOCATION :	SPECIAL INSTRUCTIONS :			
DATE :	SUBMITTAL APPROVAL : (signature or stamp)			
TAGGING INSTRUCTIONS :				

TELEPHONE:  
1-888-457-1275  
FAX:  
1-888-626-2907



PO BOX 66738 #76520,  
SAINT LOUIS, MO  
63166-6738  
USA



WEBSITE:  
[www.AccessDoorsAndPanels.com](http://www.AccessDoorsAndPanels.com)  
E-MAIL:  
[info@AccessDoorsAndPanels.com](mailto:info@AccessDoorsAndPanels.com)