



# SUBMITTAL/TECHNICAL DATA SHEET

**Medium Security Access Doors** are ideally suited for new installations or for remodeling detention centers, behavioral health facilities and schools.

**Door and Frame** are fabricated from 12 gauge, galvanized steel with a white prime coat finish.

**Frame** is fabricated from 12 gauge, galvanized steel with a white prime coat finish and provided with bolt holes.

**Pivoting Rod Hinge** continuous, concealed.

**Latch** is allen head with security pin.

**Finish** is a white prime coat.

## GUIDE SPECIFICATION

Medium Security Access Doors (Specify model number and options). Access door and frame shall be fabricated from 12 gauge, galvanized steel with a white prime coat finish. The door shall have rounded safety corners and a concealed pivoting rod hinge. Frame shall be one piece construction with no mitres or welds on the face. Latch shall be allen head with security pin operated. Finish shall be a white prime coat.

## MODEL NUMBER AND OPTIONS SELECTION

### BASE MODEL NUMBER

- SMD Medium Security Access Door (12 gauge Steel)

### SUFFIX OPTIONS

- CL Cylinder Lock (one per door)
- CLD Cylinder Lock with Dust Shutter (one per door)
- SS Stainless Steel Construction (Type 304 No. 4 Satin Finish)

For a complete list of options visit [www.AccessDoorsAndPanels.com](http://www.AccessDoorsAndPanels.com)



SKU: **SMD**

**MEDIUM SECURITY ACCESS DOOR**

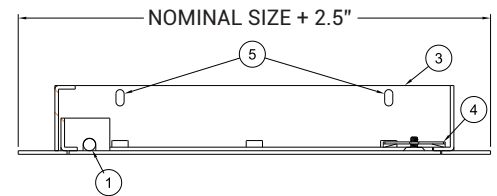
## DIMENSIONS AND APPEARANCE

>> CLICK TO VIEW ADDITIONAL DETAILS AND PRICING <<

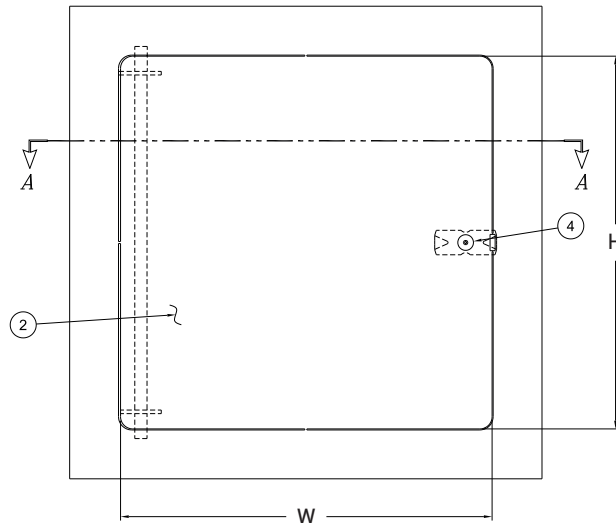
### STANDARD SIZES:

DOOR SIZE (W x H)	WALL OPENING	LATCHES	WEIGHT LBS
SMD 12" x 12"	12-1/2" x 12-1/2"	1	12.0 LBS.
SMD 16" x 16"	16-1/2" x 16-1/2"	2	18.0 LBS.
SMD 18" x 18"	18-1/2" x 18-1/2"	2	22.0 LBS.
SMD 24" x 24"	24-1/2" x 24-1/2"	4	34.0 LBS.
SMD 24" x 36"	24-1/2" x 36-1/2"	5	47.0 LBS.
SMD 36" x 36"	36-1/2" x 36-1/2"	5	65.0 LBS.

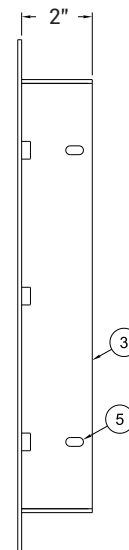
### SECTION A-A



### FRONT VIEW



### SIDE VIEW



- NOTES:**
1. CONCEALED PIVOTING ROD HINGE
  2. DOOR
  3. FRAME
  4. ALLEN HEAD WITH SECURITY PIN
  5. MOUNTING HOLES

## PROJECT DATA

Custom Sizes Available - Fast!

PROJECT NAME :	QTY	W	H	OPTIONS
ARCHITECT :				
DEALER :				
CONTRACTOR :				
LOCATION :	SPECIAL INSTRUCTIONS :			
DATE :	SUBMITTAL APPROVAL : (signature or stamp)			
TAGGING INSTRUCTIONS :				

Scan or Click



To view Pricing and Additional Product Info.

TELEPHONE:  
1-888-457-1275  
FAX:  
1-888-626-2907



PO BOX 66738 #76520,  
SAINT LOUIS, MO  
63166-6738  
USA



WEBSITE:  
[www.AccessDoorsAndPanels.com](http://www.AccessDoorsAndPanels.com)  
E-MAIL:  
[info@AccessDoorsAndPanels.com](mailto:info@AccessDoorsAndPanels.com)