

# SUBMITTAL/TECHNICAL DATA SHEET



## DESCRIPTIONS

Provides a cost effective solution for access to underground vaults that do not require the use of a flush-mounted door. Features a concealed internal mounting flange that makes installation easy and secure. Simply position the door over the vault opening and bolt it into place. Ideal for applications where the infiltration of contaminants is a concern. Its gasketed, over-lapping cover design sheds water and prevents debris and other pollutants from entering the opening.

## SPECIFICATIONS

**MATERIAL:** 1/8" (3mm) aluminum diamond plate cover and 1/4" (6mm) aluminum angle frame.

**COVER:** Diamond-pattern tread plate reinforced for 105 psf (5 kpa) live load.

**FRAME:** 1/4"x 3"x 3" (6.4mm x 76mm x 76mm) angle frame with internal mounting flange and 7/16" (11 mm) diameter anchor holes.

**GASKET:** Extruded EPDM rubber gasket permanently adhered to cover

**HINGES:** Heavy-duty, stainless steel pin tie hinges with 3/8" (9.5mm) type 316 stainless steel hinge pins.

**LATCH:** Type 316 stainless steel slam lock with fixed interior handle and removable exterior turn/lih handle. Latch release is protected by a flush, gasketed, removable screw plug. (For added security, specify: full welded exterior padlock hasp).

**LIFT ASSISTANCE:** Gas strut lifting mechanism. Automatic hold-open arm with grip handle release.

**FINISH:** Mill Finish aluminum.

**HARDWARE:** Gas strut has a powder coat finish. All other hardware is type 316 stainless steel unless otherwise specified.



SKU: **SM-BL**

## SURFACE MOUNT ACCESS DOOR



## DIMENSIONS AND APPEARANCE

>> CLICK TO VIEW ADDITIONAL DETAILS AND PRICING <<

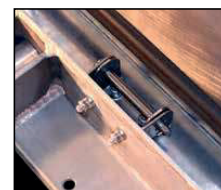
### STANDARD SIZES AND WEIGHTS

SIZE		ALUMINUM	ALUMINUM	
Weight x Length			Model #	Weight
inches	mm			lbs.
24 X 24	610 X 610	SM-1	61	28
30 X 30	762 X 762	SM-2	71	32
36 X 30	914 X 762	SM-3	78	35
36 X 36	914 X 914	SM-4	86	39
42 X 42	1067 X 1067	SM-5	99	45

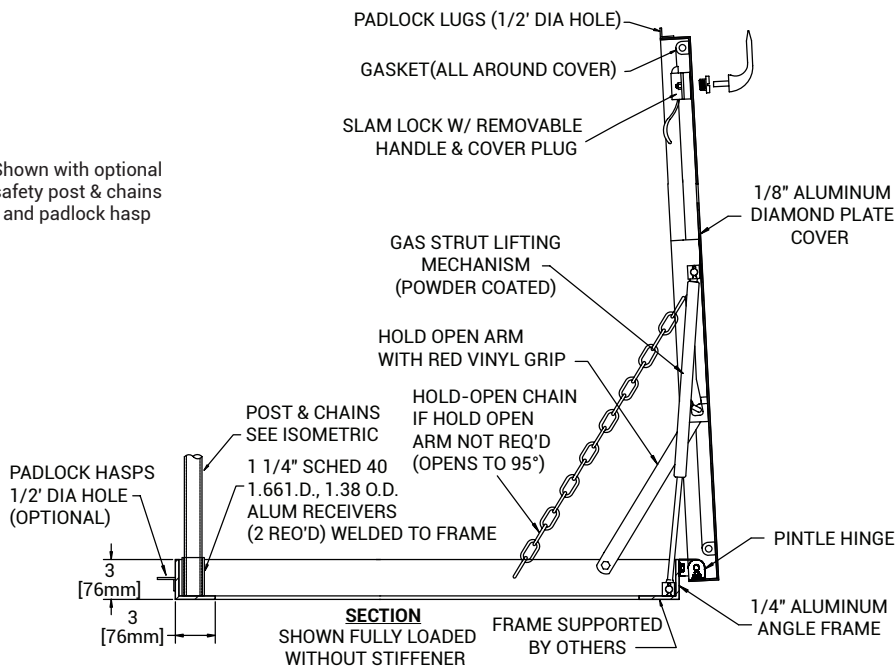
### Internal Surface Mounting Flange



### Concealed Stainless Steel Hinges



Shown with optional safety post & chains and padlock hasp



For a complete list of options visit [www.AccessDoorsAndPanels.com](http://www.AccessDoorsAndPanels.com)

## PROJECT DATA

Custom Sizes Available - Fast!

PROJECT NAME :	QTY	W	H	OPTIONS
ARCHITECT :				
DEALER :				
CONTRACTOR :				
LOCATION :	SPECIAL INSTRUCTIONS :			
DATE :				
TAGGING INSTRUCTIONS :	SUBMITTAL APPROVAL : (signature or stamp)			

Scan or Click



To view Pricing and Additional Product Info.

TELEPHONE:  
1-888-457-1275  
FAX:  
1-888-626-2907



PO BOX 66738 #76520,  
SAINT LOUIS, MO  
63166-6738  
USA



WEBSITE:  
[www.AccessDoorsAndPanels.com](http://www.AccessDoorsAndPanels.com)  
E-MAIL:  
[info@AccessDoorsAndPanels.com](mailto:info@AccessDoorsAndPanels.com)