



SUBMITTAL/TECHNICAL DATA SHEET

Slammer Access Doors are designed to provide security access with the strength and durability to withstand abusive and vandal-prone conditions prevalent in many institutions. Without sacrificing security, these doors allow maintenance personnel access to plumbing chases, shut-off valves and electrical apparatus located behind finished walls.

Door is fabricated from 10 gauge steel.

Frame is 3/16" x 2" x 2" angle steel, welded and with pre-punched mounting holes.

Latch is a detention type deadbolt lock with paracentric key, when requested.

Hinges are heavy duty and are welded to the door and frame.

Door can be provided with a high security, vandal resistant, detention type lock. Doors are manufactured with locks provided by others.

Finish is a white prime coat suitable for painting.

GUIDE SPECIFICATION

Slammer Access Doors (specify model number and options). Access Door shall be fabricated from 10 gauge steel and frame from 3/16" x 2" x 2" angle steel, welded and with pre-punched mounting holes. Door shall have heavy duty hinges welded to the door and frame. Finish shall be a white prime coat suitable for painting.

MODEL NUMBER AND OPTIONS SELECTION

BASE MODEL NUMBER

☐ -SLA Slammer Access Door

SUFFIX OPTIONS

- ☐ -LD Lock Provided by Others (1 Prep per Door)
☐ -MAS Masonry Anchor Straps
☐ -MLP Mortise Cylinder Lock (1 Prep per Door)
☐ -FA12 Folger Adams #10 lock
☐ -FA12 KEY Folger Adams key #10 lock

For a complete list of options visit
www.AccessDoorsAndPanels.com

SKU: **SLA**

SLAMMER ACCESS DOORS



DIMENSIONS AND APPEARANCE

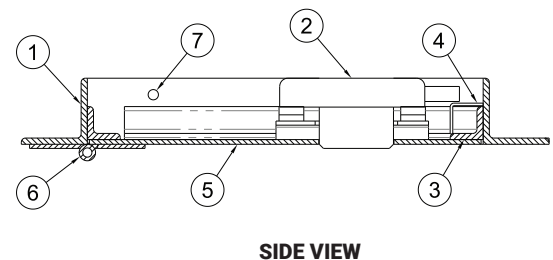
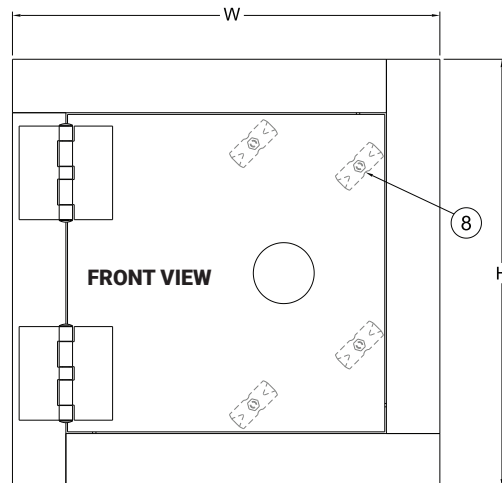
>> CLICK TO VIEW ADDITIONAL DETAILS AND PRICING <<

STANDARD SIZES:

NOMINAL DOOR SIZE (W x H)	WALL OPENING (minimum required)	LOCK PREP	WEIGHT LBS	-SDL (Extra Latches)
SLA 12" x 12"	12-1/2" x 12-1/2"	1	29.0 LBS.	0
SLA 16" x 16"	16-1/2" x 16-1/2"	1	37.0 LBS.	0
SLA 18" x 18"	18-1/2" x 18-1/2"	1	42.0 LBS.	0
SLA 24" x 24"	24-1/2" x 24-1/2"	1	59.0 LBS.	0
SLA 24" x 36"	24-1/2" x 36-1/2"	1	78.5 LBS.	4
SLA 24" x 48"	24-1/2" x 48-1/2"	1	96.0 LBS.	4
SLA 36" x 36"	36-1/2" x 36-1/2"	1	102 LBS.	4
SLA 36" x 48"	36-1/2" x 48-1/2"	1	126 LBS.	4

NOTES:

1. FRAME
2. HEAVY DUTY LOCK
3. DOOR STOP
4. LOCK KEEPER
5. DOOR
6. HEAVY DUTY HINGE
7. MOUNTING HOLES
8. SDL (EXTRA LATCHES)
BIG DOORS ONLY



PROJECT DATA

Custom Sizes Available - Fast!

Scan or



To view Pricing and
Additional Product Info.

PROJECT NAME :	QTY	W	H	OPTIONS
ARCHITECT :				
DEALER :				
CONTRACTOR :				
LOCATION :	SPECIAL INSTRUCTIONS :			
DATE :				
TAGGING INSTRUCTIONS :	SUBMITTAL APPROVAL : (signature or stamp)			

TELEPHONE:
1-888-457-1275
FAX:
1-888-626-2907



PO BOX 66738 #76520,
SAINT LOUIS, MO
63166-6738
USA



WEBSITE:
www.AccessDoorsAndPanels.com
E-MAIL:
info@AccessDoorsAndPanels.com