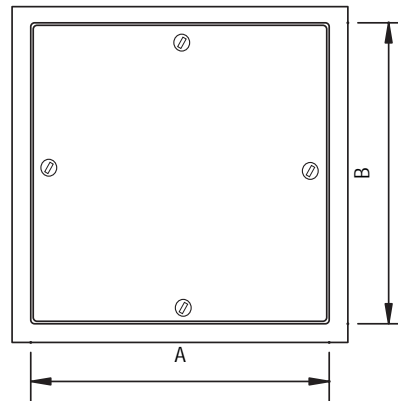


DETAIL & SUBMITTAL SHEET

WALLS & CEILINGS



FRONT ELEVATION



SPECIFICATIONS:

Door: 14 ga. steel. Trim 1-1/2" wide.

Frame: 18 ga. steel having a depth of 1-3/4"

Latches: Flush, stainless steel cam latches on all 4 sides

Finish: Grey baked enamel coat

OPTIONS (at additional cost)

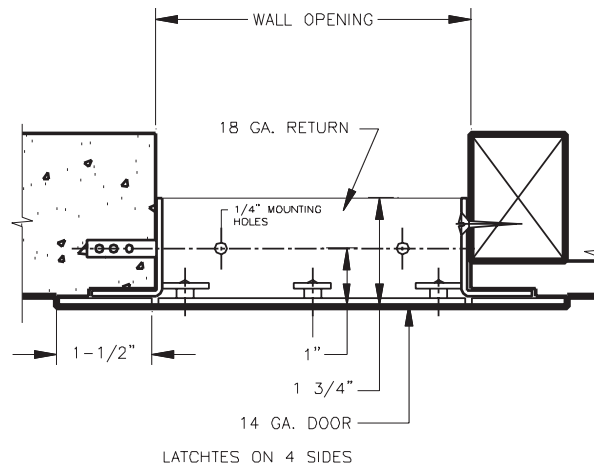
Finishes:

- Stainless Steel Type 304 No. 4 Satin Finish Brushed
- Stainless Steel Type 316 No. 4 Satin Finish Brushed

Options: (additional cost)

- WB 151 Key Code Cylinder locks-keyed alike with 2 keys per lock
- Mortise Best Lock and locks by others
- Weather resistive neoprene gasketing all 4 sides (Closed cell sponge, blend of Neoprene/EPDM/SBR. Meets ASTM D-1056: SCE 41, RE 41, 2A1; substrate UL 94HF-1 recognized)
- Special sizes available

SECTION DETAIL



✓	Item No.	Door Size W x H	Inside Wall Opening	Cam Latch	Ship Wt. Lbs.
	RP 110	8 x 8	8 1/4 x 8 1/4	4	3
	RP 110	12 x 12	12 1/4 x 12 1/4	4	8
	RP 110	16 x 16	16 1/4 x 16 1/4	4	8
	RP 110	18 x 18	18 1/4 x 18 1/4	4	13
	RP 110	24 x 24	24 1/4 x 24 1/4	8	20

Designed with the same quality features as our GP Premium door, but primarily designed for use in confined areas. Simply unscrew the cam latches, and the panel can be easily removed. The frame is laser cut from one sheet of steel for visual aesthetics.

[Click here to Online Product Page and Pricing](#)

AccessDoorsAndPanels

Phone: 1-800-609-2917 **Email:** info@accessdoorsandpanels.com
Fax: 1-888-626-2907 **Website:** www.AccessDoorsAndPanels.com
 PO Box 66738 #76520, Saint Louis, MO 63166 6738



www.AccessDoorsAndPanels.com