



# SUBMITTAL/TECHNICAL DATA SHEET

**Doors** are designed specifically to meet the needs of plaster construction. Door has 3/4" plaster ground for plaster finish.

**Door and Frame** are fabricated from 16 gauge, galvanized steel with a white prime coat finish.

**Frame** has 1/4" mounting holes to facilitate installation.

**Hinge** is a concealed continuous piano hinge.

**Latch** is screwdriver operated.

**Finish** is a white prime coat suitable for painting.



SKU: **PW**

## PLASTERED WALL ACCESS DOOR



### GUIDE SPECIFICATION

Plastered Wall access doors (specify model number and options). Access door and frame shall be fabricated from 16 gauge, galvanized steel with a white prime coat finish. The door shall have a concealed continuous piano hinge and a screwdriver operated Latch. Finish shall be a white prime coat suitable for painting.

### MODEL NUMBER AND OPTIONS SELECTION

#### BASE MODEL NUMBER

-PW Plastered Wall Access Door

#### SUFFIX OPTIONS

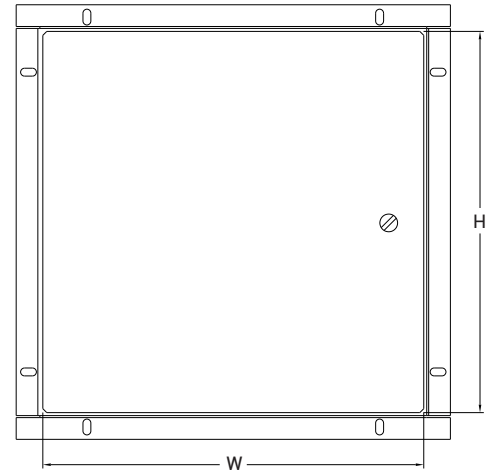
- AKL Allen Key Latch
- CL Cylinder Lock (one per door)
- CLD Cylinder Lock with Dust Shutter (one per door)
- SS Stainless Steel Construction (Type 304 No. 4 Satin Finish)

### DIMENSIONS AND APPEARANCE

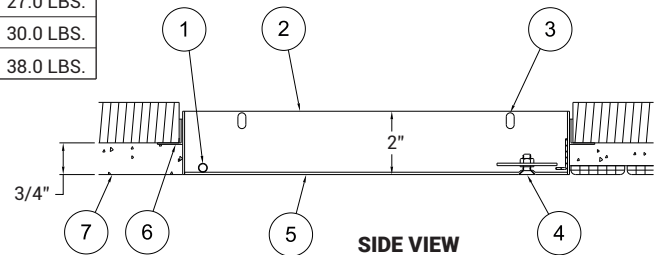
>> CLICK TO VIEW ADDITIONAL DETAILS AND PRICING <<

#### STANDARD SIZES:

NOMINAL DOOR SIZE (W x H)	WALL OPENING (minimum required)	LATCH QTY	WEIGHT LBS
PW 8" x 8"	8-1/4" x 8-1/4"	1	3.5 LBS.
PW 8" x 12"	8-1/4" x 12-1/4"	1	5.0 LBS.
PW 10" x 10"	10-1/4" x 10-1/4"	1	5.5 LBS.
PW 12" x 12"	12-1/4" x 12-1/4"	1	6.0 LBS.
PW 12" x 16"	12-1/4" x 16-1/4"	1	7.5 LBS.
PW 12" x 18"	12-1/4" x 18-1/4"	2	8.5 LBS.
PW 12" x 24"	12-1/4" x 24-1/4"	3	12.0 LBS.
PW 14" x 14"	14-1/4" x 14-1/4"	1	7.5 LBS.
PW 16" x 16"	16-1/4" x 16-1/4"	1	9.5 LBS.
PW 16" x 20"	16-1/4" x 20-1/4"	3	12.0 LBS.
PW 18" x 18"	18-1/4" x 18-1/4"	3	11.0 LBS.
PW 18" x 24"	18-1/4" x 24-1/4"	5	17.5 LBS.
PW 20" x 24"	20-1/4" x 24-1/4"	5	21.0 LBS.
PW 20" x 30"	20-1/4" x 30-1/4"	5	22.0 LBS.
PW 24" x 24"	24-1/4" x 24-1/4"	3	20.0 LBS.
PW 24" x 30"	24-1/4" x 30-1/4"	5	23.5 LBS.
PW 24" x 36"	24-1/4" x 36-1/4"	6	27.0 LBS.
PW 30" x 30"	30-1/4" x 30-1/4"	7	30.0 LBS.
PW 36" x 36"	36-1/4" x 36-1/4"	8	38.0 LBS.



FRONT VIEW



SIDE VIEW

#### NOTES:

1. CONCEALED PIANO HINGE
2. FRAME
3. MOUNTING HOLES
4. SCREWDRIVER OPERATED LATCH
5. DOOR
6. METAL ANGLE (FLANGE)
7. FINISH LINE, PLASTER OVER MASONRY

For a complete list of options visit [www.AccessDoorsAndPanels.com](http://www.AccessDoorsAndPanels.com)

### PROJECT DATA

Custom Sizes Available - Fast!

Scan or Click



To view Pricing and Additional Product Info.

PROJECT NAME :	QTY	W	H	OPTIONS
ARCHITECT :				
DEALER :				
CONTRACTOR :				
LOCATION :	SPECIAL INSTRUCTIONS :			
DATE :				
TAGGING INSTRUCTIONS :	SUBMITTAL APPROVAL : (signature or stamp)			

TELEPHONE:  
1-888-457-1275  
FAX:  
1-888-626-2907



PO BOX 66738 #76520,  
SAINT LOUIS, MO  
63166-6738  
USA



WEBSITE:  
[www.AccessDoorsAndPanels.com](http://www.AccessDoorsAndPanels.com)  
E-MAIL:  
[info@AccessDoorsAndPanels.com](mailto:info@AccessDoorsAndPanels.com)