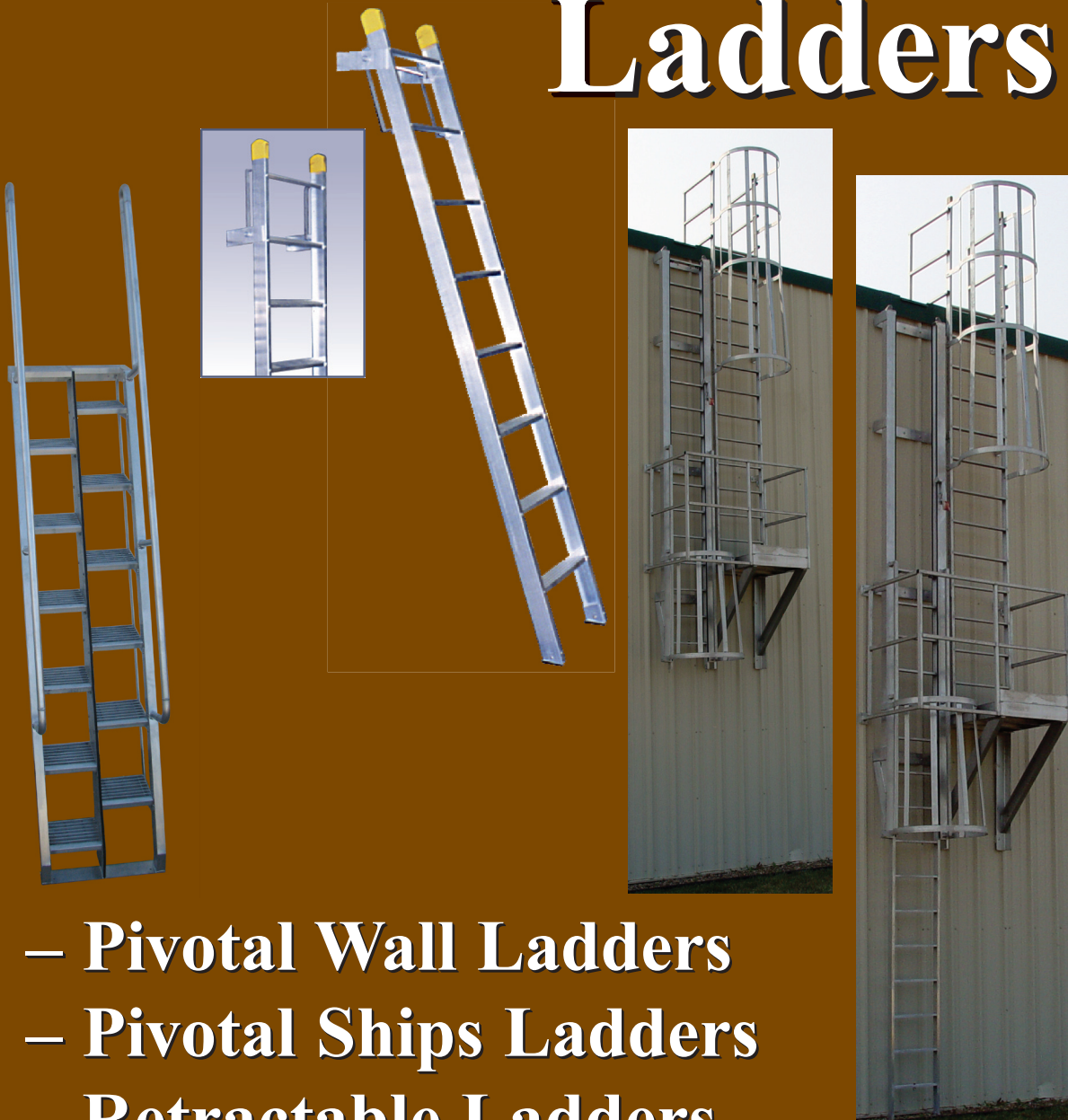


Specialty Ladders

05 51 33

**Specialty
Ladders**



- Pivotal Wall Ladders
- Pivotal Ships Ladders
- Retractable Ladders
- Alternating Tread Ladders



Phone: 1-800-609-2917
Fax: 1-888-828-6021

Email: info@accessdoorsandpanels.com
Website: www.accessdoorsandpanels.com
Address: PO Box 66738 #76520, Saint Louis

Precision Ladders, LLC

www.PrecisionLadders.com

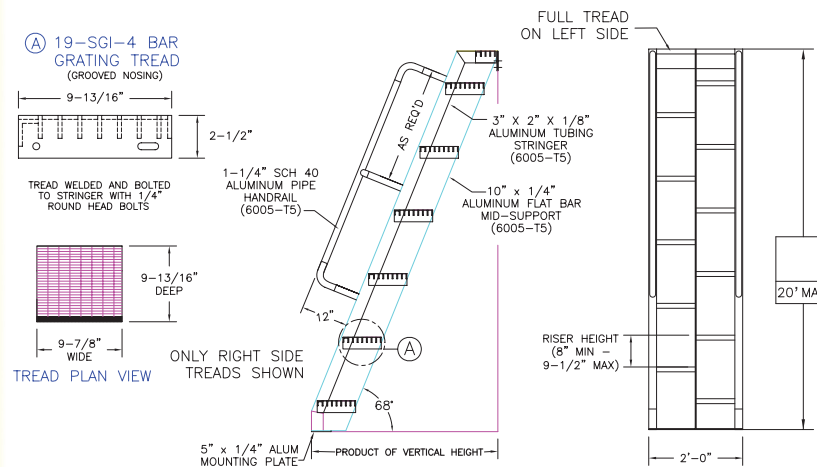


Alternating Tread Ladders

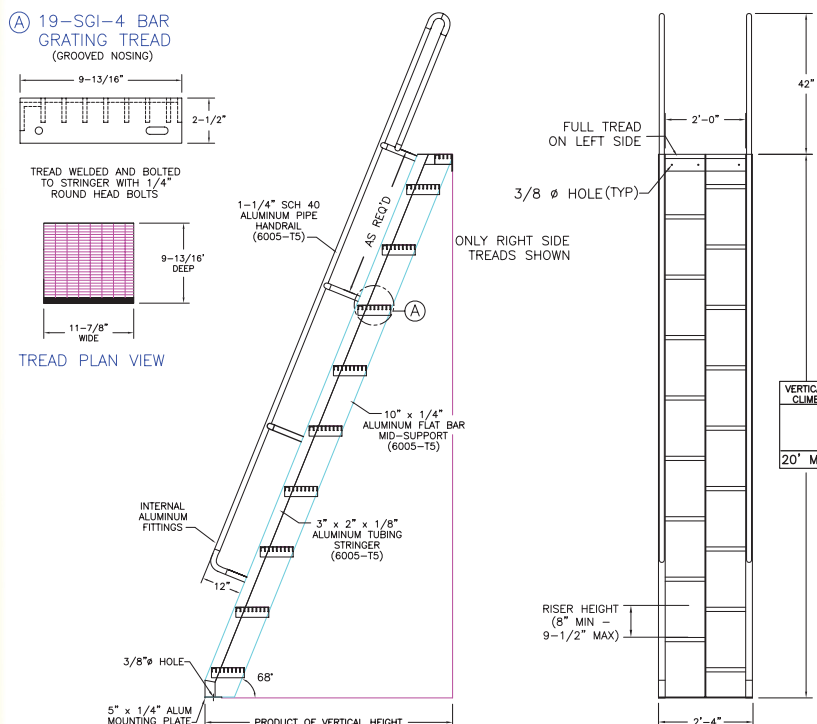
Alternating Tread ladders, compared to conventional tread ladders, allow the user to walk down the ladder face-forward thus giving the user a clear view of the floor below. Precision Ladders' AT series of aluminum Alternating Tread ladders were designed using tubular siderails to provide maximum structural integrity, yet keeping ladder weight to a minimum. As with all of our ladders and stairways, Alternating Tread ladders are built to project conditions and shipped to the job site completely fabricated and ready for installation. For Alternating Tread ladders accessing a roof, consider combining Precision's Extend-A-Rail ladder safety post, roof hatch, and guard rail to protect the hatch opening. This gives architects and contractors the option of a complete roof access system from a single source.

Model AT-XX (XX = vertical height in inches)

Model AT-XX to Roof Hatch (AT-1)



Model AT-XX with Walk-Thru (AT-2)



Highlights

- 1000 pound load capacity
- Stringers: 3" x 2" x 1/8" tubular siderails and 10" x 1/4" center stringer
- Treads: Bar Grating
- Angle of incline: 56° or 68°
- Finishes: Mill Finish (std), anodized, powder coated or primed for field painting.
- Optional model for Roof Hatch access which can come equipped with Precision's Extend-A-Rail ladder safety post to facilitate getting on or off roof. (AT-1)
- Optional 42" handrail extension (walk-thru) for accessing platform, landings, or elevated work spaces (AT-2)
- Special applications: "Crossover" or bridge ladders, a landing platform at top or between 2 ladders



Pivotal Ladders

05 51 33.16

Pivotal Ladders can be a good solution when an inclined climbing angle is desired but floor space is at a minimum. Precision's PL series Pivotal Ladders have been designed to give the climber a comfortable 70° climbing angle, but when the ladder is not in use it can be pushed out of the way to a 90° stored position. Precision makes this model to access both roof hatches and a variety of second floor platforms or work spaces. **Note: Precision does not recommend Pivotal Ladders for hatch access greater than 12' in elevation.** For the best in interior space saving access refer to Precision's **Super Simplex** Disappearing Stairway!

Highlights

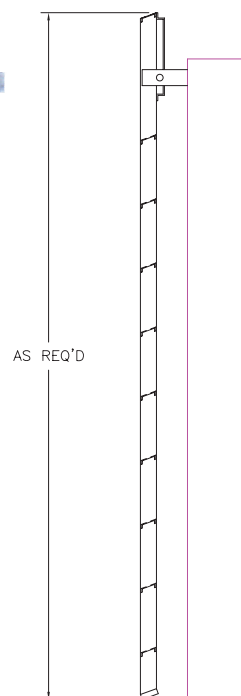
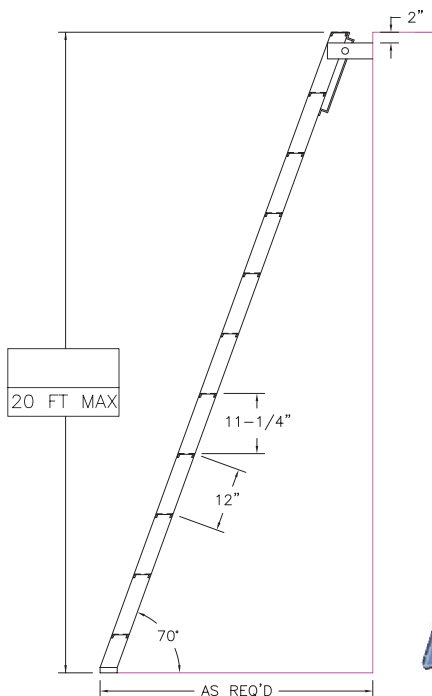
- 1000 pound load capacity
- Siderails: 3" x 1" x 1/8" tubular
- Treads: 2-1/4" serrated aluminum tread
- Angle of incline: 70°
- Finishes: Mill finish (std), anodized, powder coated or primed for field painting.
- Optional: 1-1/4" square tubing handrails welded to the ladder's siderail for additional climbing grip. 42" handrail extension (walk-thru) for accessing platforms, landings, or elevated work spaces.
- Optional model for roof hatch access

Specialty
Ladders



70° Climbing Position

Stored Position



Precision Ladders, LLC
www.PrecisionLadders.com

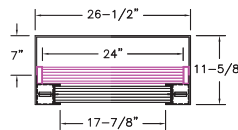


Retractable Ladders

Precision Ladders' RL series of aluminum Retractable Ladders are a super niche product that can be a great fit for a select number of applications. It is ALWAYS recommended that you contact the factory during the design phase of a project before specifying this product to insure proper fit.

Highlights

- 1000 pound load capacity
- Siderails: 3" x 2" x 1/8" tubular
- Treads: 2-1/4" serrated aluminum tread (std)
- Finishes: Mill finish (std), anodized, powder coated or primed for field painting.
- Optional 42" handrail extension (walk-thru) for accessing roof decks, platforms, landings, or elevated work spaces (image for this model shown top left)
- Optional model for roof hatch access when conditions are applicable.
- Special options: Emergency release lever from top of ladder.

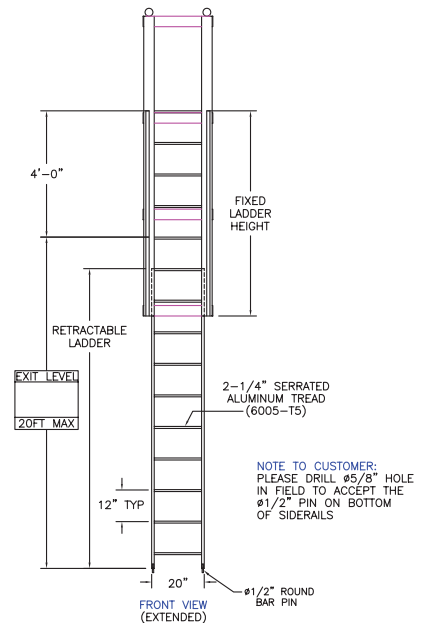


PLAN

(FIXED LADDER OMITTED FOR CLARITY)

3-1/8" ALUMINUM
TUBE/CHANNEL
GUIDE RAILSTOTAL
HEIGHT
OF
RETRACTABLE
LADDER

AS REQ'D

FRONT VIEW
(RETRACTED)(POLE OPERATED
FROM BELOW)NOTE:
FIXED LADDER IS
BOLTED BETWEEN
MOUNTING BRACKETSFRONT VIEW
(EXTENDED)

Consult factory for custom ladders and options.

Phone: 1-800-609-2917
Fax: 1-888-828-6021

Email: info@accessdoorsandpanels.com
Website: www.accessdoorsandpanels.com
Address: PO Box 66738 #76520, Saint Louis