

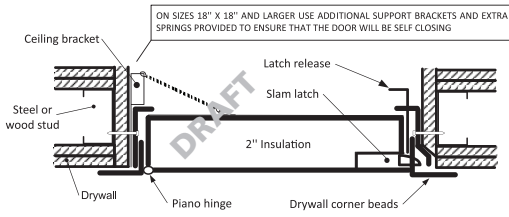
[Click here to Online Product Page and Pricing](#)

FIRE RATED INSULATED ACCESS DOOR WITH DRYWALL FINISH

PFI-GyP

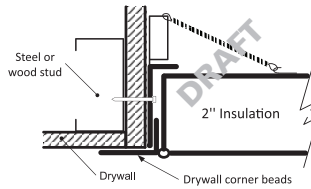
INSTALLATION: WALLS AND CEILINGS

RECOMMENDED CEILING INSTALLATION PROCEDURE FOR 3 HOUR RATING

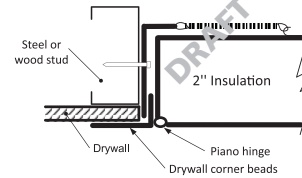


* The latch release allows the opening of the door from inside.

RECOMMENDED CEILING INSTALLATION PROCEDURE FOR 1 HOUR RATING



RECOMMENDED WALL INSTALLATION PROCEDURE FOR 1 HOUR RATING



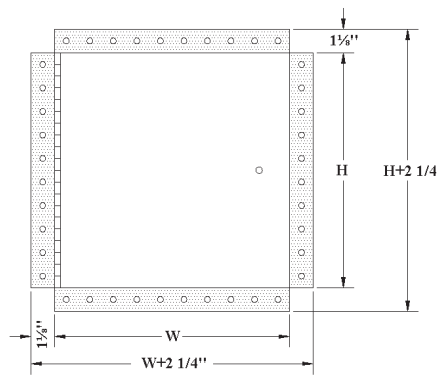
Authorities Having Jurisdiction (AHJ) should be consulted in all cases as to the particular requirements covering the installation and use of fire rated access doors.

DIMENSIONS AND APPEARANCE

LEED ready: This product contributes to LEED® credits.

Your odd sizes:
Made in 5 days

DOOR SIZE W x H inches (MM)	NUMBER OF LOCKS	WEIGHT LBS KG
8 x 8 (203 x 203)	1	7 3.2
10 x 10 (254 x 254)	1	8 3.6
12 x 12 (304 x 304)	1	10 4.5
14 x 14 (355 x 355)	1	12 5.4
16 x 16 (406 x 406)	1	14 6.4
18 x 18 (457 x 457)	1	17 7.7
22 x 22 (558 x 558)	1	24 10.9
22 x 30 (558 x 762)	1	31 14.1
22 x 36 (558 x 914)	2	38 17.2
24 x 24 (609 x 609)	1	29 13.2
24 x 36 (609 x 914)	2	36 16.4
* 24 x 48 (609 x 1219)	2	47 21.3
* 30 x 30 (762 x 762)	1	40 18.1
* 32 x 32 (812 x 812)	2	44 20
* 36 x 36 (914 x 914)	2	53 24
* 48 x 48 (1219 x 1219)	2	83 37.7



Rough wall opening is door size + 1/4" or + 6mm
*Not available for ceiling rating (maximum 24"x36")



DESCRIPTION AND MATERIAL SPECIFICATION

FIRE RATING: For installation in vertical wall assemblies:
RATING 1 1/2 HOURS. Temperature rise: 250°F (139°C) at 30 mins. and 450°F (250°C) at 60 mins. Maximum door size of 48" x 48".
RATING 3 HOURS. Temperature rise: 400°F at 60 mins. Maximum door size of 48" x 48".

FIRE RATING: For installation in horizontal ceiling assemblies:
WITH TEMPERATURE RISE: Rating 3 hours for non-combustible assembly and 1 hour for combustible assembly. Temperature rise: Max 250°F (139°C) at 30 mins, 450°F (250°C) at 60 mins. Maximum door size of 24" x 36" or 864 sq inches (see note 1)
WITHOUT TEMPERATURE RISE: Rating: 3 hours for non-combustible assembly and 1 hour for combustible assembly.

STANDARDS LISTED: NFPA 252-2003, UI 10(b), UI 555,
CAN/ULC S112 M90-R2001, CAN/ULC S104-10,
MEA # 507-06-M

NOTE 1: Maximum door size 24" x 36" can also be calculated by multiplying the surface area of the door (24" x 36"). The maximum surface area is 864 sq. inches. All door sizes equal to or smaller than 864 sq. inches fall within the standards. In addition, sizing of the doors have a maximum 3" allowance as long as the area of the doors are kept to the minimum requirement.

Material: 16 gauge cold rolled steel frame and 20 gauge galvalneal steel door
Insulation: mineral wool
Hinge: continuous piano hinge
Lock / latch: self latching tool-key operated slam latch and/or ring operated slam latch, both included
Inside panel release: standard on all doors over 12" x 12"
Automatic panel closer: standard on all doors
Finish: high quality white powder coat primer
Packaging: individually wrapped, 1 per box

POPULAR OPTIONS

Material: stainless steel #4 (brushed finish)
Lock / latch: handle operated slam latch, mortise preparation for cylinder (cylinder optional), hex head slam latch, mortise deadbolt lock
Masonry anchor: available on all sizes

For complete list of options go to: www.AccessDoorsAndPanels.com

CENDREX PARTNERS



PROJECT DATA

PROJECT NAME:	QTY	W	H	OPTIONS
ARCHITECT:				
DEAIER:				
CONTRACTOR:				
LOCATION:	SPECIAL INSTRUCTIONS:			
DATE:				
TAGGING INSTRUCTIONS:	SUBMITTAL APPROVAL: (signature or stamp)			

Email: info@accessdoorsandpanels.com
Website: www.accessdoorsandpanels.com

Phone: 1-800-609-2917
Fax: 1-888-626-2907

Address:
P.O. Box 66738 #76520 Saint Louis