

# SUBMITTAL/TECHNICAL DATA SHEET



## ADVANTAGES

- Our most popular access door with one-piece frame is the standard for the industry. The attractive 16 gauge one-piece frame provides 100% clear opening with superior strength, rigidity and true square shape.

- The 16 gauge door panel is mounted to the frame on concealed spring hinges that open to 175 degrees for complete access without allowing the door to impact the wall.

- For easy opening the cam latch release mechanism moves the edge of the door panel outward to provide a fingerhold.

- Available in brilliant white, stainless steel and galvanized steel. Optional primed colors also include grey powder coated steel, gold sand and jet black.

## FEATURES

- 16 GA. C.R.S. One piece frame
- 16 GA. C.R.S. Door panel
- Concealed spring hinge allowing door to open 175\*
- Easy opening screwdriver cam latch
- White powder coated steel
- Rough req. Wall opening = width + 1/4 x height + 1/4"
- Angle iron cover support used when size > 36" x 36"
- Wall application only when size > 36" x 36"
- Welded 2 piece frame whensize > 48" x 48"



SKU: **M**

## STANDARD FLUSH DOOR

FOR DRYWALL, MASONRY OR TILE WALLS



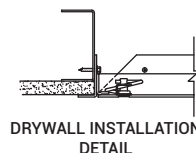
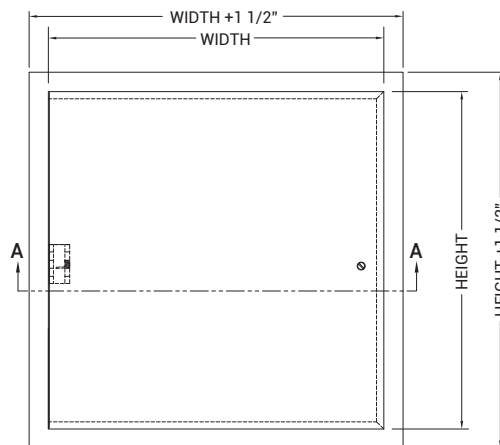
## DIMENSIONS AND APPEARANCE

>> CLICK TO VIEW ADDITIONAL DETAILS AND PRICING <<

### STANDARD SIZES AND PRODUCT NUMBERS:

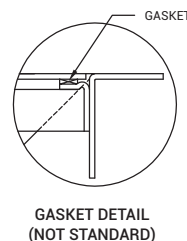
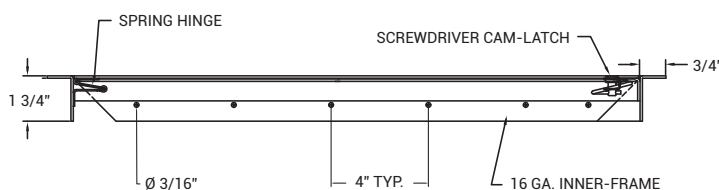
DOOR SIZE	OPENING SIZE	HINGES	CAMS	SHIPPING WEIGHT LBS.
6 x 6	6 1/4" x 6 1/4"	1	1	3
8 x 8	8 1/4" x 8 1/4"	1	1	5
8 x 12	8 1/4" x 12 1/4"	1	1	6
10 x 10	10 1/4" x 10 1/4"	1	1	6
12 x 12	12 1/4" x 12 1/4"	1	1	8
12 x 16	12 1/4" x 16 1/4"	2	1	10
12 x 18	12 1/4" x 18 1/4"	2	1	11
12 x 24	12 1/4" x 24 1/4"	2	2	13
14 x 14	14 1/4" x 14 1/4"	2	1	10
16 x 16	16 1/4" x 16 1/4"	2	1	12
16 x 20	16 1/4" x 20 1/4"	2	1	14
18 x 18	18 1/4" x 18 1/4"	2	1	13
18 x 24	18 1/4" x 24 1/4"	2	2	17
20 x 20	20 1/4" x 20 1/4"	2	2	16
20 x 24	20 1/4" x 24 1/4"	2	4*	20
20 x 30	20 1/4" x 30 1/4"	3	5*	24
22 x 22	22 1/4" x 22 1/4"	2	4*	20
22 x 30	22 1/4" x 30 1/4"	3	4*	-
22 x 36	22 1/4" x 36 1/4"	3	4*	-
24 x 24	24 1/4" x 24 1/4"	2	4*	21
24 x 30	24 1/4" x 30 1/4"	3	5*	26
24 x 36	24 1/4" x 36 1/4"	3	5*	32
24 x 48	24 1/4" x 48 1/4"	5	5*	41
30 x 30	30 1/4" x 30 1/4"	4	5*	30
36 x 36	36 1/4" x 36 1/4"	5	5*	42

\* = One cam Centered at Top and Bottom of Panel, Balance on Side Opposite Hinges



Check the Second Page for more Detailed Information

### SECTION VIEW A-A



For a complete list of options visit [www.AccessDoorsAndPanels.com](http://www.AccessDoorsAndPanels.com)

## PROJECT DATA

Custom Sizes Available - Fast!

PROJECT NAME :	QTY	W	H	OPTIONS
ARCHITECT :				
DEALER :				
CONTRACTOR :				
LOCATION :	SPECIAL INSTRUCTIONS :			
DATE :	SUBMITTAL APPROVAL : (signature or stamp)			
TAGGING INSTRUCTIONS :				

Scan or Click



To view Pricing and Additional Product Info.

TELEPHONE:  
1-888-457-1275  
FAX:  
1-888-626-2907



PO BOX 66738 #76520,  
SAINT LOUIS, MO  
63166-6738  
USA



WEBSITE:  
[www.AccessDoorsAndPanels.com](http://www.AccessDoorsAndPanels.com)  
E-MAIL:  
[info@accessdoorsandpanels.com](mailto:info@accessdoorsandpanels.com)



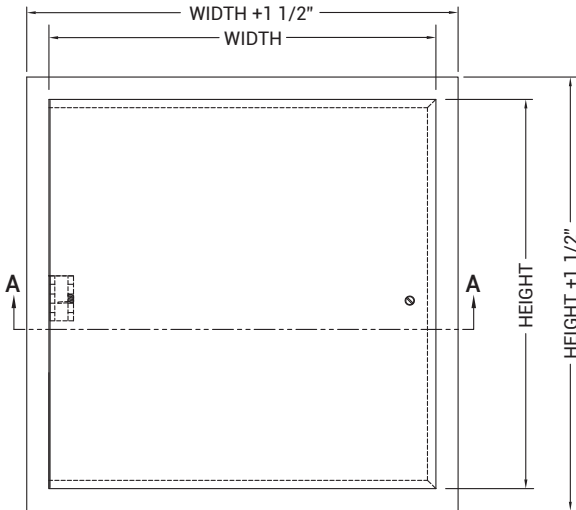
# M

# STANDARD FLUSH DOOR FOR DRYWALL, MASONRY / TILE WALLS

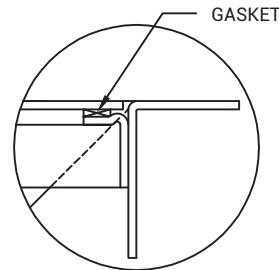
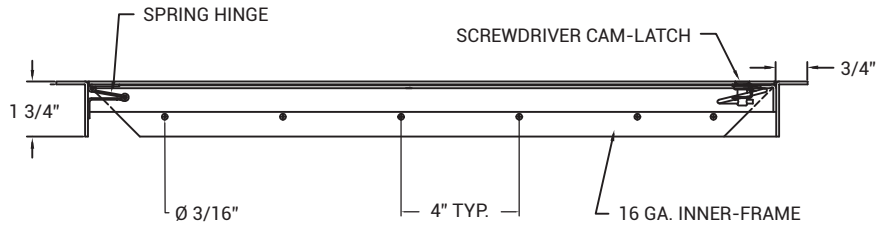
## STANDARD SIZES AND PART #'S

DOOR SIZE WxH	NUMBER OF CAMS	NUMBER OF HINGES	PRODUCT PART #'S							
			PAINTED STEEL				STAINLESS STEEL			
			CAM LATCH		1x CYL LOCK		CAM LATCH		1x CYL LOCK	
W/O ANCHORS	W/ ANCHORS	W/O ANCHORS	W/ ANCHORS	W/O ANCHORS	W/ ANCHORS	W/O ANCHORS	W/ ANCHORS			
6 x 6	1	1	3202008	3202208	3202108	3202308				
8 x 8	1	1	3202010	3202210	3202110	3202310	3202410	3202550	3202450	3202650
8 x 12	1	1	3202012	3202212	3202112	3202312				
10 x 10	1	1	3202013	3202213	3202113	3202313	3202413	3202552	3202452	3202652
12 x 12	1	1	3202014	3202214	3202114	3202314	3202414	3202554	3202454	3202654
12 x 16	1	2	3202016	3202216	3202116	3202316				
12 x 18	1	2	3202018	3202218	3202118	3202318				
12 x 24	2	2	3202019	3202219	3202119	3202319				
14 x 14	1	2	3202015	3202215	3202115	3202315				
16 x 16	1	2	3202020	3202220	3202120	3202320	3202420	3202560	3202460	3202660
16 x 20	1	2	3202022	3202222	3202122	3202322				
18 x 18	1	2	3202024	3202224	3202124	3202324	3202424	3202564	3202464	3202664
18 x 24	2	2	3202025		3202125					
20 x 20	2	2	3202027	3202227	3202127	3202327				
20 x 24	4*	2	3202026	3202226	3202126	3202326				
20 x 30	5*	3	3202028	3202228	3202128	3202328				
22 x 22	4*	2	3202029	3202229	3202129	3202329				
22 x 30	4*	3	3202031		3202131					
22 x 36	4*	3	3202033		3202133					
24 x 24	4*	2	3202030	3202230	3202130	3202330	3202430	3202570	3202470	3202670
24 x 30	5*	3	3202032	3202232	3202132	3202332				
24 x 36	5*	3	3202034	3202234	3202134	3202334				
24 x 48	5*	5	3202035		3202135					
30 x 30	5*	4	3202038	3202238	3202138	3202338				
36 x 36	5*	5	3202046	3202246	3202146	3202346				

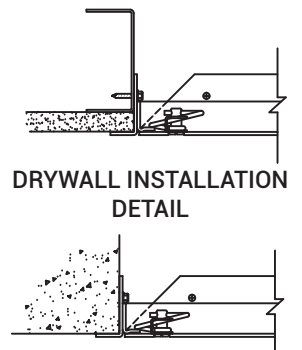
\* = One cam Centered at Top and Bottom of Panel, Balance on Side Opposite Hinges



### SECTION VIEW A-A

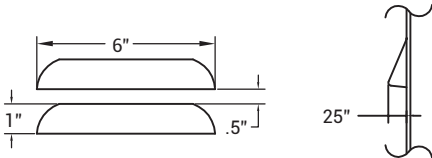


GASKET  
GASKET DETAIL  
(NOT STANDARD)

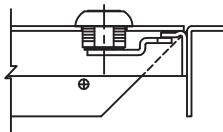


DRYWALL INSTALLATION  
DETAIL

MASONRY OR TILE WALL  
INSTALLATION DETAIL



LOUVER FRONT and PROFILE DETAIL  
(NOT STANDARD)



CYLINDER LOCK  
(NOT STANDARD)