



SUBMITTAL/TECHNICAL DATA SHEET

DESCRIPTION

The KSTC is designed for use with concealed and exposed grid systems, respectively. Panel opens up to receive tile.

Door panel on the sesame doors will open to a check position for safety and then release for a 90° opening and is removable.

SPECIFICATION

MATERIAL: 20 gauge cold rolled steel

LOCK/LATCH: Plastic grommets and be square head key wrench operated

HINGE: Concealed pivot rod

FINISH: Prime coat of rust inhibitive electrostatic powder, baked grey enamel

GASKETING: Flame retardant polyurethane

CONSTRUCTION:

1. Frame shall be 20 gauge hot dipped galvanized steel with a rib containing a flame retardant polyurethane gasket.
2. Door shall be 20 gauge electro-galvanized mild steel.
3. Escutcheon caps shall be plastic molded with hinged flaps.
4. Locks shall be budget locks operated with square shanked key.

SKU: **KSTC**

SESAME CONCEALED GRID CEILING HATCH



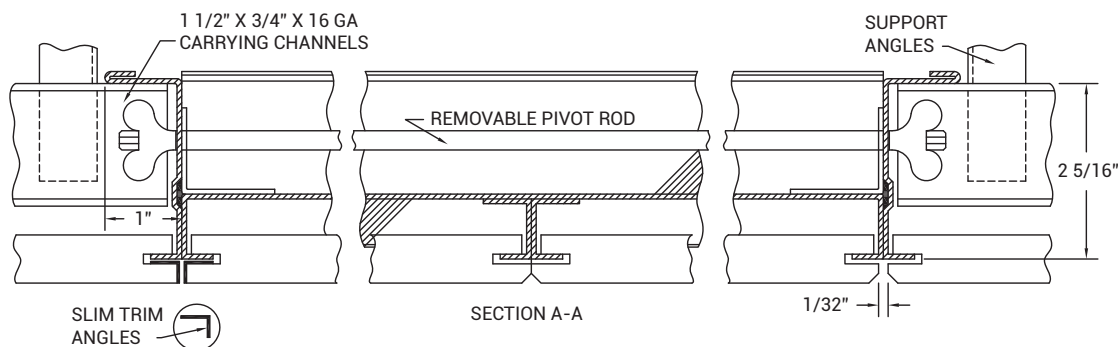
DIMENSIONS AND APPEARANCE

>> CLICK TO VIEW ADDITIONAL DETAILS AND PRICING <<

STANDARD SIZES:

DOOR SIZE W" X H"	SHIP WEIGHT LBS.
24" X 24"	19 LBS
24" X 48"	35 LBS

(Special Sizes On Request)



For a complete list of options visit
www.AccessDoorsAndPanels.com

PROJECT DATA

Custom Sizes Available - Fast!

PROJECT NAME :	QTY	W	H	OPTIONS
ARCHITECT :				
DEALER :				
CONTRACTOR :				
LOCATION :	SPECIAL INSTRUCTIONS :			
DATE :				
TAGGING INSTRUCTIONS :	SUBMITTAL APPROVAL : (signature or stamp)			

Scan  or  Click



To view Pricing and
Additional Product Info.



TELEPHONE:
1-888-457-1275
FAX:
1-888-626-2907



PO BOX 66738 #76520,
SAINT LOUIS, MO
63166-6738
USA



WEBSITE:
www.AccessDoorsAndPanels.com
E-MAIL:
info@AccessDoorsAndPanels.com