



# SUBMITTAL/TECHNICAL DATA SHEET

## SPECIFICATIONS

Access door shall be a watertight door. Door lid shall be fabricated with 1/4" aluminum diamond plate designed to support a H20 loading (without impact) with a maximum deflection of 1/150th of span. Frame shall be a 1/4" extruded aluminum channel-type frame with a 1/8" neoprene cushion and continuous anchor flange and a 1-1/2" drain coupling welded to the underside. Door shall open 90 degrees and automatically lock in that position with a stainless steel hold open arm with a red vinyl grip. Door lid shall be equipped with a recessed lift handle. Hinges shall be all stainless steel and attached with tamperproof fasteners. All hardware shall be grade 316 stainless steel. Doors shall have a mill finish with a bitumastic coating applied to the exterior of the frame to prevent hydrolysis with concrete. Doors shall be equipped with a stainless steel spring assist which shall provide a smooth and controlled operation when opening and closing door. Operation will not be affected by temperature. Door shall be equipped with a stainless steel slam lock with cover plug and removable handle. Door shall be furnished with a peel-off protective cover to protect finish from concrete splatter. Underside of lid shall have visibility tape applied for safety. Manufacturer shall guarantee material and workmanship for a period of ten years.

## OPTIONS

- Skirting to depth of slab
- Fiberglass insulation
- Safety chains & posts

## LOCK OPTIONS

- Staple for padlock
- Recessed hasp
- Keyed deadbolt lock
- Pentahead lock

For a complete list of options visit  
[www.AccessDoorsAndPanels.com](http://www.AccessDoorsAndPanels.com)

SKU: **KFD HD WT SPRG**

## HEAVY DUTY WATER-TIGHT FLOOR PANEL

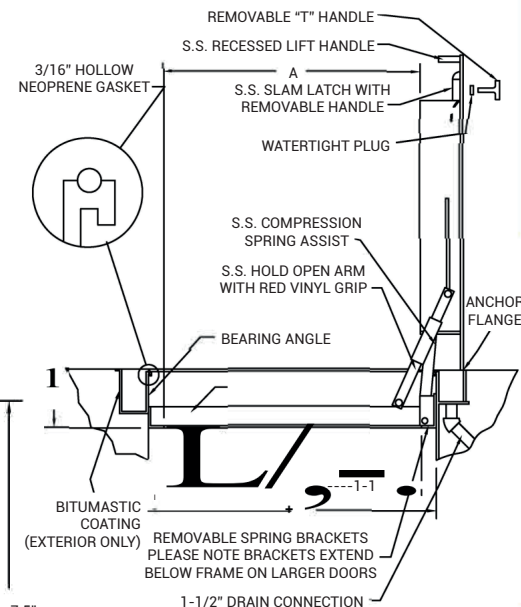
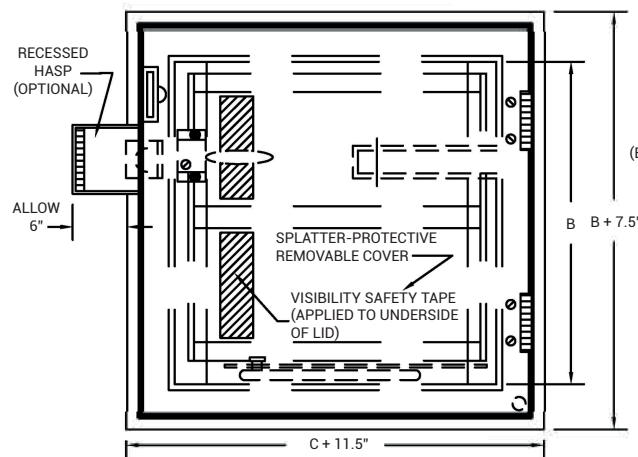


## DIMENSIONS AND APPEARANCE

>> CLICK TO VIEW ADDITIONAL DETAILS AND PRICING <<

### STANDARD SIZES:

MODEL	A	B	C	D	WT. LBS
FD2424AHNS	24"	24"	24"	5.5"	45 lbs.
FD2430AHNS	24"	30"	24"	5.5"	50 lbs.
FD2436AHNS	24"	36"	24"	5.5"	55 lbs.
FD2442AHNS	24"	42"	24"	5.5"	60 lbs.
FD3030AHNS	30"	30"	31"	6.5"	55 lbs.
FD3036AHNS	30"	36"	31"	6.5"	60 lbs.
FD3048AHNS	30"	48"	31"	6.5"	70 lbs.
FD3636AHNS	36"	36"	37"	6.5"	70 lbs.
FD3648AHNS	36"	48"	37"	6.5"	85 lbs.
FD4242AHWS	42"	42"	44"	7.5"	95 lbs.





### NOTE

ALUMINUM H20 DOORS  
ARE FOR OFF-STREET  
LOCATION ONLY.

For more detailed specifications  
see submittal sheet

## PROJECT DATA

Custom Sizes Available - Fast!

Scan  or 



To view Pricing and  
Additional Product Info.

PROJECT NAME :	QTY	W	H	OPTIONS
ARCHITECT :				
DEALER :				
CONTRACTOR :				
LOCATION :	SPECIAL INSTRUCTIONS :			
DATE :				
TAGGING INSTRUCTIONS :	SUBMITTAL APPROVAL : (signature or stamp)			

TELEPHONE:  
1-888-457-1275  
FAX:  
1-888-626-2907



PO BOX 66738 #76520,  
SAINT LOUIS, MO  
63166-6738  
USA



WEBSITE:  
[www.AccessDoorsAndPanels.com](http://www.AccessDoorsAndPanels.com)  
E-MAIL:  
[info@AccessDoorsAndPanels.com](mailto:info@AccessDoorsAndPanels.com)



SUBMITTAL



TELEPHONE:  
1-888-457-1275  
FAX:  
1-888-626-2907



PO BOX 66738 #76520,  
SAINT LOUIS, MO  
63166-6738  
USA



WEBSITE:  
[www.AccessDoorsAndPanels.com](http://www.AccessDoorsAndPanels.com)  
E-MAIL:  
[info@AccessDoorsAndPanels.com](mailto:info@AccessDoorsAndPanels.com)

KFD HD WT SPRG

# HEAVY DUTY WATERTIGHT FLOOR PANEL

