



# SUBMITTAL/TECHNICAL DATA SHEET

## DESCRIPTION

For the most heavy-duty access panel our 7 gauge HSP can provide you with the solid construction and lock options for many detention and security building applications.

From the heavy-duty hinges with non-removable barrels to the welded frame construction, we offer a specialty access door to meet your needs.

## SPECIFICATION

**FRAME:** 2" x 3" x 3/16" angle frame with 2" flange, welded at corners.

**DOOR:** 7 gauge box-formed steel door mounted on two heavy-duty 4" butt hinges welded to the frame.

**FINISH:** White powder coat paint. See options below for more colors.

**ANCHORS:** Heavy duty steel masonry anchors welded to frame at factory.

**LOCKS:** Many lock options are available below. When door size requires additional anchoring to frame, torx security screws will be used in addition to the lock selected.

### SIZES:

Minimum Size 8" x 8" (20.3 x 20.3 cm)

Maximum Size Wall: 48" x 48"  
(121.9 x 121.9 cm)

or

Other dimensions up to 1296 in<sup>2</sup>  
(32.9 cm<sup>2</sup>).

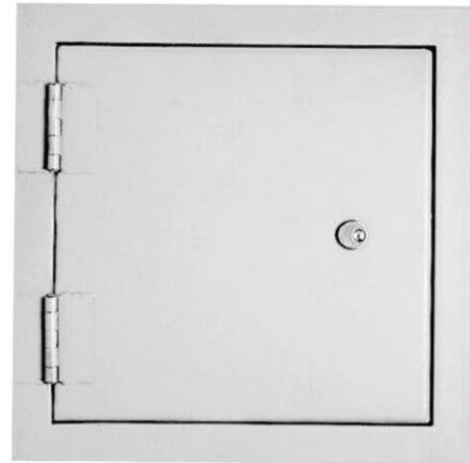
Maximum Size Ceiling: 24" x 24"  
(71.1 x 71.1 cm)

For a complete list of options visit  
[www.AccessDoorsAndPanels.com](http://www.AccessDoorsAndPanels.com)

SKU: **HSP**

## HIGH SECURITY 7 GAUGE ACCESS PANEL

FOR DETENTION APPLICATIONS

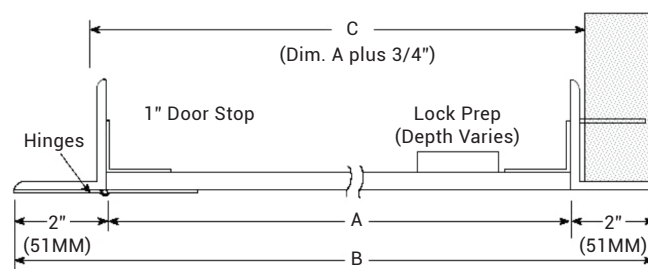
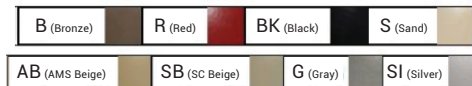


## DIMENSIONS AND APPEARANCE

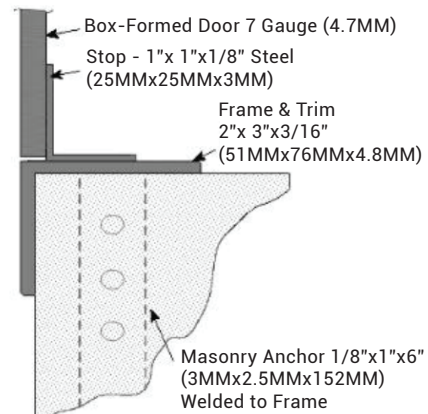
>> CLICK TO VIEW ADDITIONAL DETAILS AND PRICING <<

DOOR SIZES WALL AND CEILING: MODEL HSP						
A - DOOR SIZE W X H	B - FRAME DIMENSIONS		C - OPENING DIMENSIONS		SHIP WEIGHT APPROXIMATE	LOCK
Inches (CM)	WIDTH	HEIGHT	WIDTH	HEIGHT		
08 x 08 (20.3 X 20.3)	12 (30.5)	12 (30.5)	8 3/4 (22.2)	8 3/4 (22.2)	20 (9)	1
10 x 10 (25.4 X 25.4)	14 (35.6)	14 (35.6)	10 3/4 (27.3)	10 3/4 (27.3)	25 (11)	1
12 x 12 (30.5 X 30.5)	16 (40.6)	16 (40.6)	12 3/4 (32.4)	12 3/4 (32.4)	30 (14)	1
14 x 14 (35.6 X 35.6)	18 (45.7)	18 (45.7)	14 3/4 (37.5)	14 3/4 (37.5)	36 (16)	1
16 x 16 (40.6 X 40.6)	20 (50.8)	20 (50.8)	16 3/4 (42.5)	16 3/4 (42.5)	40 (18)	1
18 x 18 (45.7 X 45.7)	22 (55.9)	22 (55.9)	18 3/4 (47.6)	18 3/4 (47.6)	47 (21)	1
24 x 24 (61 X 61)	28 (71.1)	28 (71.1)	24 3/4 (62.9)	24 3/4 (62.9)	65 (29)	1 LOCK, 2 SECURITY SCREWS
DOOR SIZES BELOW WALLS ONLY						
24 x 36 (61 X 91.4)	28 (71.1)	40 (101.6)	24 3/4 (62.9)	36 3/4 (93.3)	90 (41)	1 LOCK, 6 SECURITY SCREWS
24 x 48 (61 X 121.9)	28 (71.1)	52 (132.1)	24 3/4 (62.9)	48 3/4 (123.8)	112 (51)	1 LOCK, 6 SECURITY SCREWS

Standard Color is White, Optional Colors at Additional Cost



### CONSTRUCTION DETAIL



## PROJECT DATA

Custom Sizes Available - Fast!

PROJECT NAME :	QTY	W	H	OPTIONS
ARCHITECT :				
DEALER :				
CONTRACTOR :				
LOCATION :	SPECIAL INSTRUCTIONS :			
DATE :	SUBMITTAL APPROVAL : (signature or stamp)			
TAGGING INSTRUCTIONS :				

Scan or



To view Pricing and  
Additional Product Info.



TELEPHONE:  
1-888-457-1275  
FAX:  
1-888-626-2907



PO BOX 66738 #76520,  
SAINT LOUIS, MO  
63166-6738  
USA

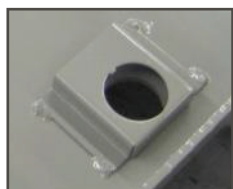


WEBSITE:  
[www.AccessDoorsAndPanels.com](http://www.AccessDoorsAndPanels.com)  
E-MAIL:  
[info@AccessDoorsAndPanels.com](mailto:info@AccessDoorsAndPanels.com)



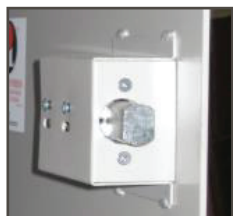
## HSP

# HIGH SECURITY ACCESS PANELS FOR DETENTION APPLICATIONS



### MORTISE CYLINDER CAM LOCK PREP (MCP)

The door is prepped for a mortise cylinder and cam to be provided, and installed by others. The prep plate is factory welded, and painted as an integral part of the door. Prep is for a mortise cylinder that is 1-1/8" (2.9 cm) in diameter and the recommended cylinder length is 1-1/4" (3.2 cm). A longer cylinder can be adapted to it by using a rose spacer. The cam must be 7/16" (1.91 cm) long, as measured from the edge of the cylinder to the tip of the cam. Brass retaining ring #0646 for locks is not included. Verify if locks provided by others are equipped with them and order if necessary. Lock is not included. JL can provide lock models 06431 or 1E74 installed, at additional cost. See page 3.



### MORTISE DEADBOLT PREP (MDP)

This option includes a lock mechanism which is prepped for a mortise cylinder and cam to be provided and installed by others. The prep includes a 2-1/2" x 3-1/2" x 1- 3/4" case welded and painted as an integral part of the door, with installed Lori assembly with 1" x 5/8" throw. Prep is for a mortise cylinder that is 1-1/8" (2.9 cm) in diameter and the recommended cylinder length is 1-1/4" (3.2 cm). A longer cylinder can be adapted to it by using a rose spacer. The cam must be an Adams Rite cam.. Lock and mounting screws are not included. JL can provide lock models 06441 or 1E74 installed at additional cost. See page 3.



### DETENTION DEADLOCK PREP (DDP)

The door will be prepped for a right-handed, heavy-duty lock to be provided and installed by others. The prep plate is factory welded, primed & painted as an integral part of the door. Lock and mounting bolts are not included - please specify the manufacturer and model number of the lock to ensure compatibility. JL can provide lock model 5010 installed, at additional cost. See page 3.



### DETENTION SLAM LOCK PREP (DSP)

This option includes a door which is prepped for a detention slam latch to be provided and installed by others. The prep plate is factory welded, primed & painted as an integral part of the door. Please specify the manufacturer and model number of the lock to ensure compatibility. Lock and mounting bolts are not included. JL can provide lock model 5017 installed, at additional cost. See page 3.



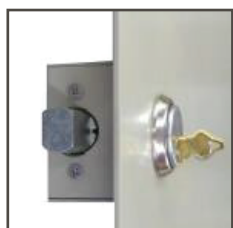
### DETENTION MOGUL DEADLOCK PREP (DDI)

The door will be prepped for an Airteq 5010M Mogul Cylinder lock to be provided and installed by others. The prep plate is factory welded, primed & painted as an integral part of the door. Lock and mounting bolts are not included - please specify the manufacturer and model number of the lock to ensure compatibility. JL can provide lock model 5010M installed, at additional cost. See page 3.



### MORTISE CYLINDER CAM LOCK INSTALLED (MCP-02)

The model 06431 cylinder lock with 2 Yale Standard keys has a heavy-duty 7/16" cam machined from solid brass bar stock, and is installed at the factory. The prep plate is factory welded, and painted as an integral part of the door. The mortise cylinder is 1-1/8" (2.9 cm) in diameter and the cylinder length is 1-1/4" (3.2 cm).



### MORTISE DEADBOLT INSTALLED (MDP-03 OR MDP-07)

Mortise deadbolt installed at the factory includes a case welded and painted as an integral part of the door with installed Lori assembly with 1" x 5/8" throw. Select from lock models 06441 (MDP-03) in satin chrome with Adams Rite cam and keys - drilled 6 pin, keyed 5 pin, or 1E74 (MDP-07) with blank construction core to be keyed on site. Both locks are machined from solid brass bar stock. The mortise cylinder is 1-1/8" (2.9 cm) in diameter and the cylinder length is 1-1/4" (3.2 cm). Security torx bolts secure the lock to the door. Order the operational key and the control key for the 1E74. Construction core separately.



# LOCK OPTIONS



TELEPHONE:  
1-888-457-1275  
FAX:  
1-888-626-2907



PO BOX 66738 #76520,  
SAINT LOUIS, MO  
63166-6738  
USA



WEBSITE:  
[www.AccessDoorsAndPanels.com](http://www.AccessDoorsAndPanels.com)  
E-MAIL:  
[info@AccessDoorsAndPanels.com](mailto:info@AccessDoorsAndPanels.com)

## HSP

# HIGH SECURITY ACCESS PANELS FOR DETENTION APPLICATIONS



### DETENTION DEADBOLT INSTALLED WITH SECURITY LOCK (DDP-5010 OR DDP-5010SF)

Right-handed, factory-installed deadbolt with factory welded prep plate, primed & painted as an integral part of the door. DDP-5010 has a medium security deadbolt installed at the factory. This lock has a 1-1/2" x 3/4" bolt with a 5/8" throw, with a hot rolled steel deadbolt and a single piece, bronze alloy, paracentric key cylinder with 5 tumblers, and is keyed one side. The case is high strength alloy steel. DDP-5010SF is the maximum security Southern Folger Series 10 deadlock installed at the factory. This lock has a 1-1/2" x 3/4" bolt with a 5/8" throw, with a one piece bronze alloy paracentric key cylinder with 5 tumblers and is keyed one side. The case is ductile iron with 1/4" steel cover. Please specify the number of keys to be ordered with this lock - keys to be ordered separately



### DETENTION SLAM LOCK INSTALLED WITH SECURITY LOCK (DSP-5017)

Right-handed, factory-installed with factory welded prep plate, primed & painted as an integral part of the door. Model 5017 is a medium security slam latch with a stainless steel latch bolt with 1" x 7/16" throw. Slam-locks automatically when door is closed. Lock is constructed with a single piece bronze alloy paracentric key cylinder, 5 tempered brass lever tumblers keyed one side in a high-tensile strength alloy steel case. All steel parts plated for corrosion-resistance. Dimensions: 1 1/4" x 4" x 2 3/4". Pinned torx bolts secure the lock to the door. Please specify the number of keys to be ordered with this lock - keys to be ordered separately.



### DETENTION DEADLOCK INSTALLED WITH MOGUL CYLINDER LOCK (DDI-5010M)

Right-handed, detention lock with high security mogul cylinder, installed at the factory by pinned torx bolts. The prep plate is factory welded, primed & painted as an integral part of the door. Model 5010M is a high security deadbolt with a 6 pin mogul cylinder. The deadbolt is fabricated of 1-1/2" x 3/4" hot rolled steel with a 5/8" throw. Lock is constructed with a single piece bronze alloy paracentric key cylinder, 5 tempered brass lever tumblers keyed one side in a high-tensile strength alloy steel case. Dimensions 1-1/4" x 4-1/2" x 3". Please specify the number of keys to be ordered with these locks - Keys to be ordered separately



Mortise  
Cylinder Key



Paracentric  
Security Key



Mogul  
Cylinder Key