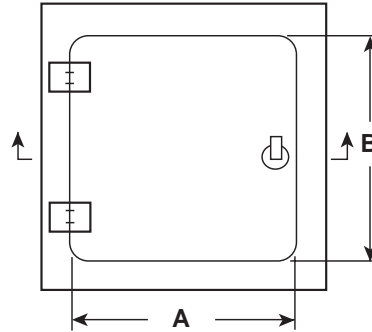


DETAIL & SUBMITTAL SHEET

WALLS & CEILINGS



FRONT ELEVATION



SPECIFICATIONS:

Door: 10 ga. steel

Frame: 2" x 2" x 3 1/16" angle

Hinges: Heavy duty type butt hinges welded to surround and door. Allows opening to 180°

Anchors: Heavy steel, welded to frame

Lock: Prepped for detention lock.

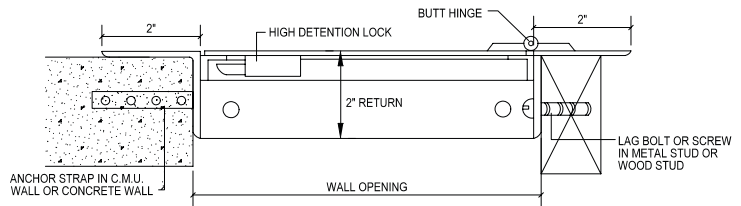
Finish: Grey baked enamel coat

OPTIONS (at additional cost)

Finishes:

- Stainless Steel Type 304 No. 4 Satin Finish Brushed
- Stainless Steel Type 316 No. 4 Satin Finish Brushed
- Detention lock and Paracentric key
- Special sizes available

SECTION DETAIL



✓	Item No.	Door Size W x H	Wall Opening	Ship Wt. Lbs.
	HG SEC 1100	12 x 12	12 3/4 x 12 3/4	46
	HG SEC 1100	16 x 16	16 3/4 x 16 3/4	56
	HG SEC 1100	18 x 18	18 3/4 x 18 3/4	62
	HG SEC 1100	24 x 24	24 3/4 x 24 3/4	82
	HG SEC 1100	24 x 36	24 3/4 x 36 3/4	87
	HG SEC 1100	36 x 36	36 3/4 x 36 3/4	90
	WB-15	Detention Lock		
	WB-16	Paracentric Key		

Prepped for heavy duty detention lock and paracentric key



WB-15



WB-16

The WB High Security Access Door is designed to be placed where maximum security is of great importance. This door comes prepped for a detention lock which is sold separately.

[Click here to Online Product Page and Pricing](#)

AccessDoorsAndPanels

Phone: 1-800-609-2917

Fax: 1-888-626-2907

Email: info@accessdoorsandpanels.com

Website: www.AccessDoorsAndPanels.com

PO Box 66738 #76520, Saint Louis, MO 63166 6738



www.AccessDoorsAndPanels.com