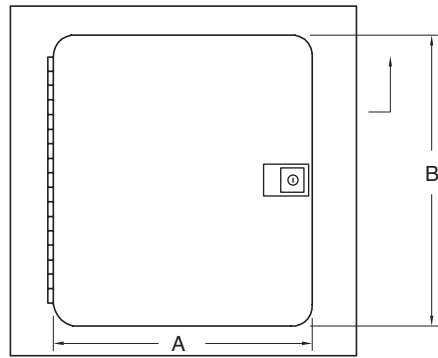
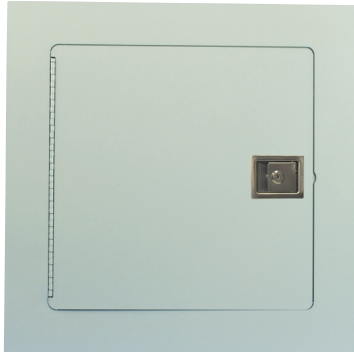


**BEST in Quality!** **GOOD in Price!**

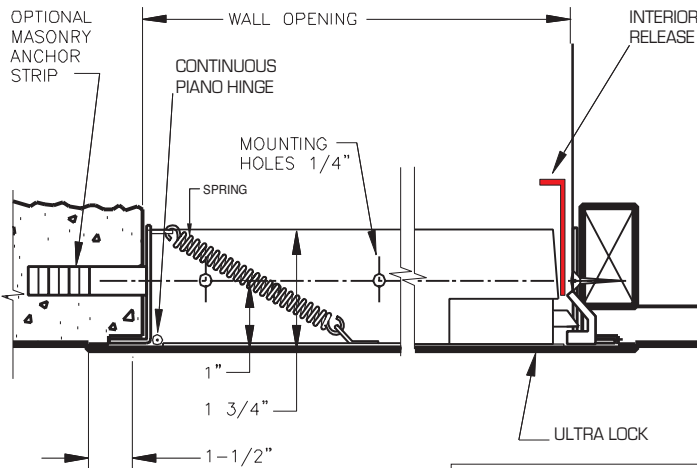
**SUBMITTAL SHEET**

**FRONT ELEVATION**

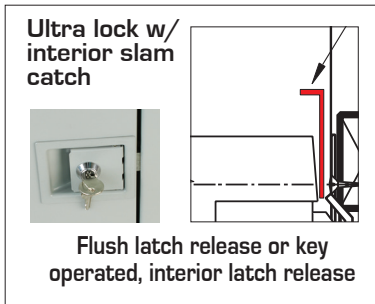
**WALLS & CEILINGS**



**SECTION DETAIL**



This Premium precision-flush access door for wall and ceiling installation far surpasses other doors. The WB GP 102 Series Premium features close assist, ultra lock and interior latch release.



**SPECIFICATIONS:**

- Door:** 14 ga. steel with radius corners
- Trim:** 18 ga. steel
- Finish:** Primed grey baked enamel
- Latch:** Ultra lock with slam catch, flush latch release or key operated, interior latch release
- Hinges:** Continuous piano hinge only

**OPTIONS (at additional cost)**

- Finishes:**
- Stainless Steel Type 304 No. 4 Satin Finish Brushed
  - Stainless Steel Type 316 No. 4 Satin Finish Brushed
- Options: (additional cost)**
- Weather resistive neoprene gasket all 4 sides (Closed cell sponge, blend of Neoprene/EPDM/SBR. Meets ASTM D-1056: SCE 41, RE 41, 2A1; substrate UL 94HF-1 recognized)
  - Primed white enamel
  - Special sizes available
  - \_\_\_\_\_

✓	Item No.	Door Size W x H	Wall Opening	Ultra Lock	Ship Wt. Lbs.
	GP 102	12 x 12	12 1/4 x 12 1/4	1	8
	GP 102	14 x 14	14 1/4 x 14 1/4	1	10
	GP 102	16 x 16	16 1/4 x 16 1/4	1	13
	GP 102	18 x 18	18 1/4 x 18 1/4	1	14
	GP 102	22 x 30	22 1/4 x 30 1/4	2	25
	GP 102	24 x 24	24 1/4 x 24 1/4	2	24
	GP 102	24 x 36	24 1/4 x 36 1/4	2	35

**RELATED PRODUCTS**



**BETTER in Quality!**  
**BETTER in Price!**

**WB UAD 200 Series**  
**Utility Access Door**



**GOOD in Quality!**  
**BEST in Price!**

**WB Basic 300 Series**  
**Access Door**

**AccessDoorsAndPanels**

**Phone:** 1-800-609-2917 **Email:** info@accessdoorsandpanels.com  
**Fax:** 1-888-626-2907 **Website:** www.AccessDoorsAndPanels.com  
 PO Box 66738 #76520, Saint Louis, MO 63166 6738