



# SUBMITTAL/TECHNICAL DATA SHEET

**Door and Frame** are fabricated from 18 gauge, galvanized steel with a white prime coat finish. Door and frame are designed to form a tight seal reducing air infiltration by placing gaskets on all three sides of the door stop and gasketing the space between the door and frame.

**Gasket** material consists of 1/8" x 3/8" oil-resistant, fire-retardant blended Buna-N Foam.

**Frame** is four piece construction, 1" wide and provides perfect concealment of the rough wall opening. Wall frame is provided with 1/4" mounting holes for fastening within the furred spaces allowing faster installation and fixing maximum clearance.

**Concealed Pivoting Rod Hinge** prevents distortion and closes door squarely.

**Latch** is screwdriver operated.

**Finish** is a white prime coat.

## GUIDE SPECIFICATION

Gasketed Access Doors. Access door and frame shall be fabricated from 18 gauge, galvanized steel with a white prime coat finish. The door shall have rounded safety corners and a concealed pivoting rod hinge. Frame shall be one piece construction with no mitres or welds on the face. Door and frame shall have a tight seal reducing air infiltration by placing gaskets on all three sides of the door stop and gasketing the space between the door and frame. Latch shall be screwdriver operated.

## MODEL NUMBER AND OPTIONS SELECTION

### BASE MODEL NUMBER

- ☐ -GD Gasketed Access Door (18 Gauge Steel)

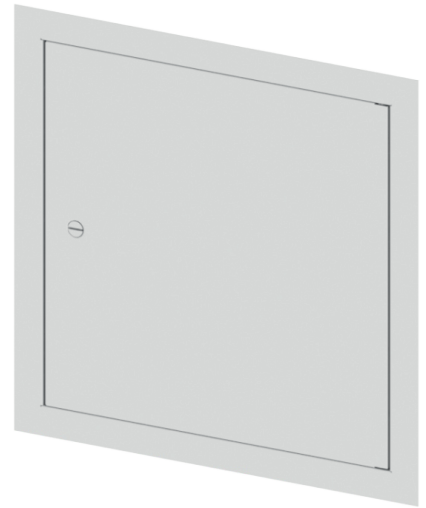
### SUFFIX OPTIONS

- ☐ -AKL Allen Key Latch  
☐ -CL Cylinder Lock (one per door)  
☐ -CLD Cylinder Lock with Dust Shutter (one per door)  
☐ -SS Stainless Steel Construction (Type 304 No. 4 Satin Finish)

For a complete list of options visit  
[www.AccessDoorsAndPanels.com](http://www.AccessDoorsAndPanels.com)

SKU: **GD**

## GASKETED ACCESS DOORS

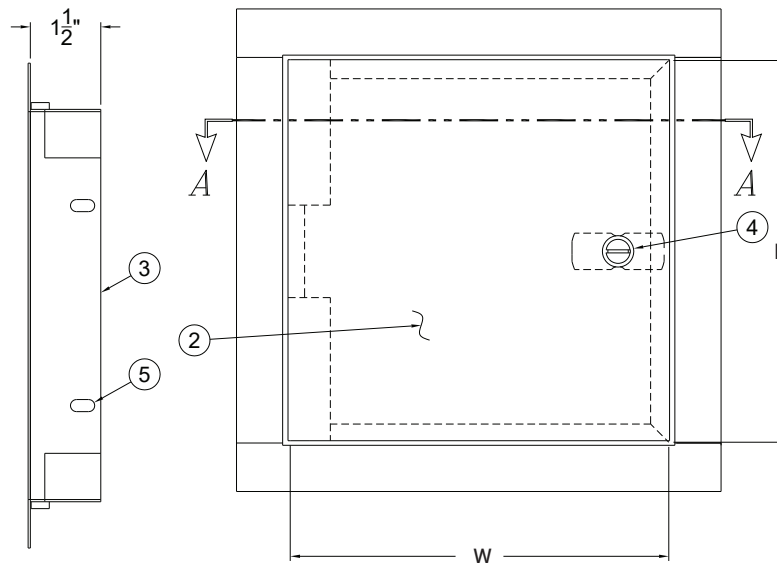
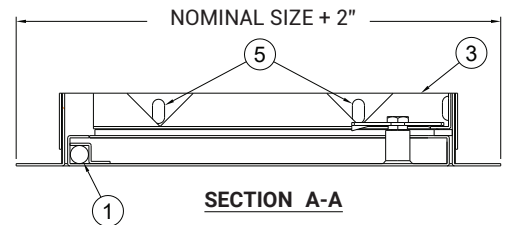


## DIMENSIONS AND APPEARANCE

>> CLICK TO VIEW ADDITIONAL DETAILS AND PRICING <<

### STANDARD SIZES:

NOMINAL DOOR SIZE (W x H)	WALL OPENING (minimum required)	LOCK QTY	WEIGHT LBS
GD 8" x 8"	8-1/2" x 8-1/2"	1	3.5 LBS.
GD 12" x 12"	12-1/2" x 12-1/2"	1	6.0 LBS.
GD 16" x 16"	16-1/2" x 16-1/2"	2	9.0 LBS.
GD 18" x 18"	18-1/2" x 18-1/2"	2	10.5 LBS.
GD 24" x 24"	24-1/2" x 24-1/2"	2	16.0 LBS.
GD 24" x 36"	24-1/2" x 36-1/2"	2	22.0 LBS.





### NOTES:

1. CONCEALED PIVOTING ROD HINGE
2. DOOR
3. FRAME
4. SCREWDRIVER OPERATED LATCH
5. MOUNTING HOLES

## PROJECT DATA

Custom Sizes Available - Fast!

Scan  or  Click



To view Pricing and  
Additional Product Info.

PROJECT NAME :	QTY	W	H	OPTIONS
ARCHITECT :				
DEALER :				
CONTRACTOR :				
LOCATION :	SPECIAL INSTRUCTIONS :			
DATE :	SUBMITTAL APPROVAL : (signature or stamp)			
TAGGING INSTRUCTIONS :				

TELEPHONE:  
1-888-457-1275  
FAX:  
1-888-626-2907



PO BOX 66738 #76520,  
SAINT LOUIS, MO  
63166-6738  
USA



WEBSITE:  
[www.AccessDoorsAndPanels.com](http://www.AccessDoorsAndPanels.com)  
E-MAIL:  
[info@AccessDoorsAndPanels.com](mailto:info@AccessDoorsAndPanels.com)