



High-quality, architecturally pleasing, innovative access doors for walls, ceilings, ducts, floors and roofs



# Floor Door, Fire Rated, Flush Diamond Plate FRFD

## Application

- Maintains the fire rating of a 2 hour floor ceiling assembly
- Designed for interior applications

## Product Features

- Flush aluminum diamond plate cover
- Warnock Hersey International 2 hour fire rating
- Tested to NFPA 288 ; ASTM E 119



## FRFD Floor Door Specifications:

**Material:** Aluminum door & top frame ; Stainless steel bottom frame, hinges & hardware

**Door:** 1/4" aluminum diamond plate reinforced for live load of 150 pounds/per sq. ft.

**Frame:** 3" x 3" x 1/4" aluminum top frame with thermal break 3 1/2" x 2" x 11gauge stainless steel bottom frame

**Insulation:** Two - 1" thick layers of ceramic blanket insulation attached to bottom frame

**Hinge:** Type 316 stainless steel continuous piano hinge

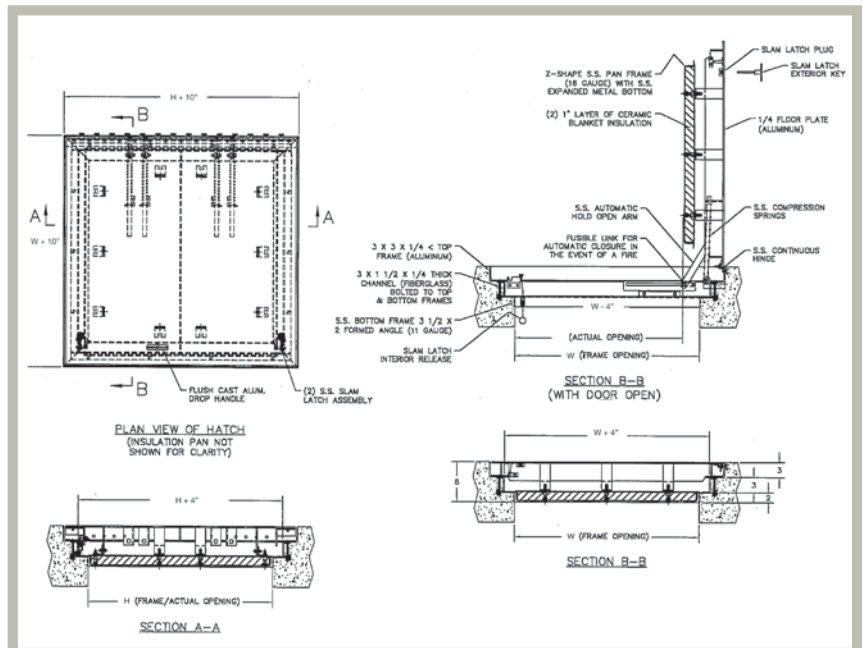
**Opening Device:** Door panel opens to 90 degrees. Automatic hold open arm with red vinyl grip keeps door in open position to ensure safe egress. Stainless steel compression springs provide lift assistance. U.L. listed 165 degree fusible link is provided for automatic closing and latching in the event of smoke or fire.

**Latch:** Stainless steel slam latch assembly with interior release

## AVAILABLE SIZES (Special sizes available upon request)

| FRAME I.D. SIZE W X H | WEIGHT PER DOOR |     |      |
|-----------------------|-----------------|-----|------|
|                       | inches          | mm  | lbs. |
| 24 x 24               | 609 x 609       | 80  | 36   |
| 24 x 36               | 609 x 914       | 140 | 63   |
| 24 x 48               | 609 x 1219      | 160 | 73   |
| 30 x 30               | 762 x 762       | 130 | 59   |
| 30 x 36               | 762 x 914       | 160 | 73   |
| 36 x 36               | 914 x 914       | 190 | 86   |
| 36 x 48               | 914 x 1219      | 240 | 109  |
| 42 x 42               | 1006 x 1006     | 250 | 113  |
| 48 x 48               | 1219 x 1219     | 280 | 127  |

For detailed specifications see submittal sheet



[Click here to Online Product Page and Pricing](#)

For more information, contact AccessDoorsAndPanels [www.AccessDoorsAndPanels.com](http://www.AccessDoorsAndPanels.com)

Phone: 1-800-609-2917

Fax: 1-888-626-2907

Email: [info@accessdoorsandpanels.com](mailto:info@accessdoorsandpanels.com)