

SUBMITTAL/TECHNICAL DATA SHEET



SPECIFICATIONS

01. Hold open/self closing pneumatic cylinder
02. 1/4 Aluminum plate cover (Cover reinf. for 150 lbs per sq. foot live load)
03. 1/4" Aluminum channel with extruded 1" anchor flange
04. Stainless steel 3" piano hinge
05. Terrazzo reinfo. wire mesh (2"x1"x.063Ga.)
06. Slam lock with cable and pull handle
07. Removable square key wrench
08. Lifting mechanism with reinforced composite tubes and compression springs
09. Removable cover plug
10. Release mechanism with 165° fusible link and 16 gram co2 cartridge (Extra link provided)
11. Guide arm (If req'd)

SHOP FINISH:

ALUMINUM: Mill finish

HARDWARE: Zinc plated and chromate sealed (Unless otherwise Specified)

Reinforced for 150lbs per sq. ft. (732 KG. per Sq. meter) live load

INSTALLER NOTES

- A. Use caution, cover is spring loaded. Do not remove safety shipping bolt until unit is to be installed and in normal horizontal operating position.
- B. Before anchoring in place open and close door. Check to see that the door in the closed position rests on the frame all around. If not, shim under the frame at the proper corner.
- C. See installation procedure shipped with door.

For a complete list of options visit www.AccessDoorsAndPanels.com

QTY TYPE SIZE (WIDTH X LENGTH)

FR-2 2'-6" x 2'-6" [762mm] x [762mm]

FR-3 3'-0" x 2'-6" [914mm] x [762mm]

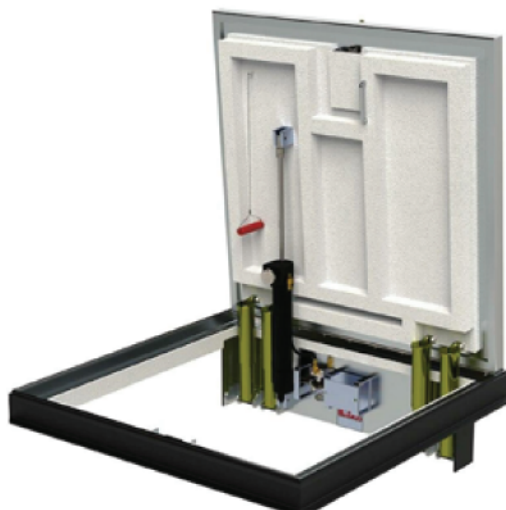
FR-4 3'-0" x 3'-0" [914mm] x [914mm]

FR-5 3'-6" x 3'-6" [1065mm] x [1065mm]

FR-6 2'-6" x 4'-0" [762mm] x [1219mm]

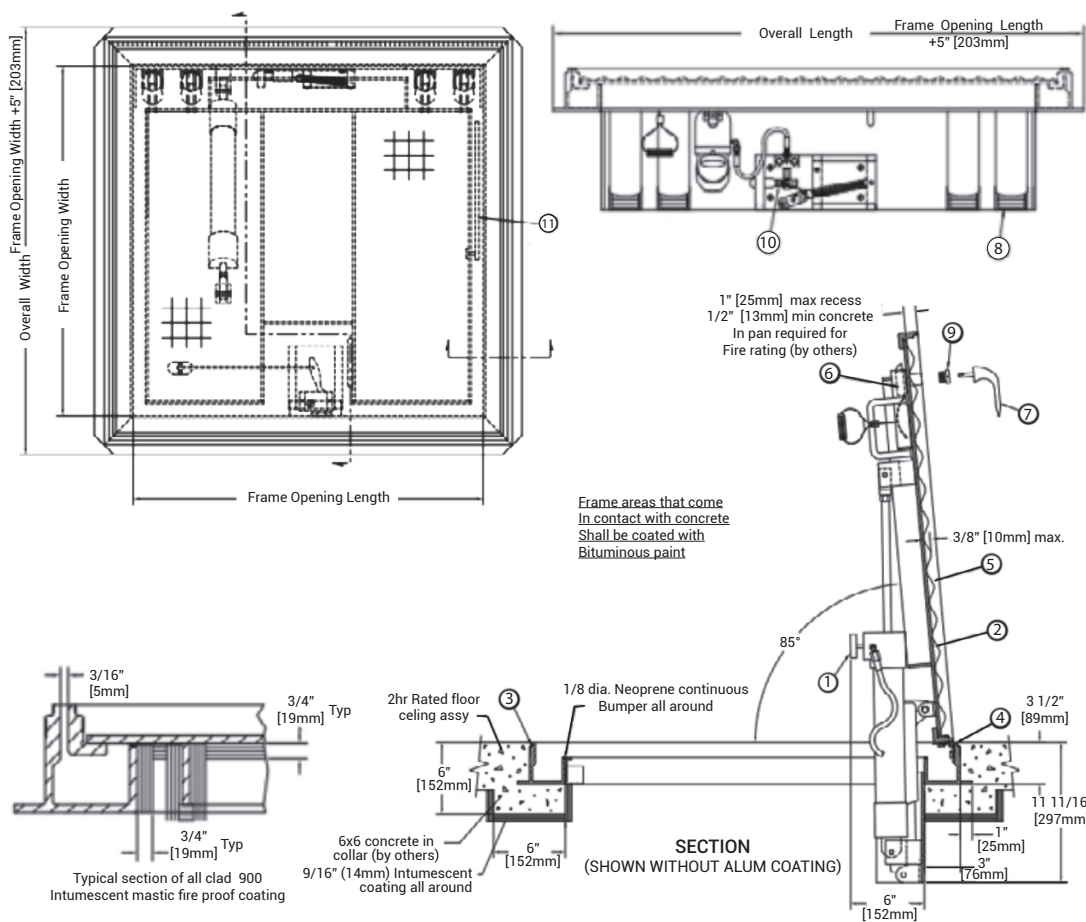
SKU: **FR-FIRE**

FIRE RATED SINGLE LEAF ACCESS DOOR



DIMENSIONS AND APPEARANCE

>> CLICK TO VIEW ADDITIONAL DETAILS AND PRICING <<



PROJECT DATA

Custom Sizes Available - Fast!

PROJECT NAME :	QTY	W	H	OPTIONS
ARCHITECT :				
DEALER :				
CONTRACTOR :				
LOCATION :	SPECIAL INSTRUCTIONS :			
DATE :				
TAGGING INSTRUCTIONS :	SUBMITTAL APPROVAL : (signature or stamp)			

Scan or Click



To view Pricing and Additional Product Info.

TELEPHONE:
1-888-457-1275
FAX:
1-888-626-2907

PO BOX 66738 #76520,
SAINT LOUIS, MO
63166-6738
USA



WEBSITE:
www.AccessDoorsAndPanels.com
E-MAIL:
info@AccessDoorsAndPanels.com