



JL INDUSTRIES

# SUBMITTAL/TECHNICAL DATA SHEET

## DESCRIPTIONS

The Largest Fire-Rated Two Hour Ceiling Door Available With Double Doors and Removable Center Mullion. Double Leaf Allows Greater Accessibility and reduces the swing radius and clears objects which interfere with the opening of the door.

## SPECIFICATION

**MATERIALS:** Satin finish galvanized steel or 304 stainless steel

**FRAME:** 16 ga., up to and including 30" x 48". Larger sizes are 14 ga. Removable center mullion. Frame Depth "D" = 2 1/4" (57 mm).

**FLANGE:** 7/8" (22 mm) up to and including 36" x 36". Larger sizes are 1-1/4" (32mm).

**DOOR PANEL:** 18 ga. panel with 22 ga liner.

**INSULATION:** The door panel contains 1 1/2" of high temperature insulation material.

**FINISHES:** Rust-inhibitive off-white prime coat or # 4 polished stainless steel finish on exterior surface.

**HINGES:** Concealed continuous rod hinge. 48" or longer in wall position will be a continuous piano hinge. Stainless models have a stainless steel continuous piano hinge. Hinge is the (H) dimension.

**PANEL CLOSER:** The automatic panel closer will close & latch the door from an open position of approximately 90° as required by NFPA 80.

**LATCH:** The standard factory installed latch is a flush mount 1/4" allen key. All fire-rated locks are self-latching and include an interior latch release mechanism allowing the doors to be opened from the inside.

### SIZES:

Minimum size 18" x 12"  
Maximum size for walls is 48" x 60"  
Maximum for ceilings is 60" x 48"

SKU: **FD20**

## 2HR FIRE-RATED ACCESS PANEL DOUBLE DOOR



## DIMENSIONS AND APPEARANCE

>> CLICK TO VIEW ADDITIONAL DETAILS AND PRICING <<

Rough Opening is Order Size W x H (H=Hinge Side)		No. of Latches/Locks	Approx Weight Kgs	Approximate Weight Lbs.
Inches	Metric(mm)			
24 x 24	610 x 610	2	25	35
36 x 48	914 x 1219	2	39	85
40 x 40	1016 x 1016	2	38	84
40 x 48	1016 x 1219	4	43	94
48 x 36	1219 x 914	2	36	79
48 x 40	1219 x 1016	4	49	107
48 x 48	1219 x 1219	4	35	78
60 x 24	1524 x 610	2	41	90
60 x 30	1524 x 762	2	48	105
60 x 36	1524 x 914	4	42	93
60 x 40	1524 x 1016	4	52	114
60 x 48	1524 x 1219	4	61	135

Net Opening = Width minus 6" (153mm)  
Height minus 1-1/2" (39 mm)

Other sizes available upon request for all Models.  
Second dimension given is the hinge side (shown in Blue) unless otherwise specified

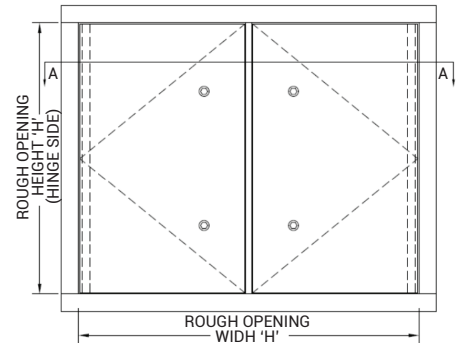
Note:

Some Lock Options are not included in standard pricing.

LATCH AND LOCK OPTIONS		
Standard 1/4" Allen Key (A)	Optional Knurled Knob (KK)	Optional Mortise Lock (MPI)

For detailed specifications see submittal sheet

Additional Sizes				
Rough Opening is Order Size W x H (H=Hinge Side)		No. of Latches/Locks	Approx Weight Kgs	Approximate Weight Lbs.
Inches	Metric(mm)			
24 x 60	610 x 1524	4	34	74
36 x 60	914 x 1524	4	51	111
40 x 60	1016 x 1524	4	54	120
48 x 60	1219 x 1524	4	64	140



### FIRE-RATING INFORMATION

Intertek Warnock Hersey Listed and Labeled:  
2 Hour Fire Rating for vertical and horizontal installation.



Temp Rise Max: 139°C/250° F at 30 Min 250° C/450° F at 60 Min

### Testing Standards:

Vertical: NFPA 252, UL 10B, CAN/ULC S10 4  
Horizontal: UBC 43-7, CAN/ULC S112

For a complete list of options visit [www.AccessDoorsAndPanels.com](http://www.AccessDoorsAndPanels.com)

## PROJECT DATA

Custom Sizes Available - Fast!

Scan or



To view Pricing and Additional Product Info.

PROJECT NAME :	QTY	W	H	OPTIONS
ARCHITECT :				
DEALER :				
CONTRACTOR :				
LOCATION :	SPECIAL INSTRUCTIONS :			
DATE :	SUBMITTAL APPROVAL : (signature or stamp)			
TAGGING INSTRUCTIONS :				

TELEPHONE:  
1-888-457-1275  
FAX:  
1-888-626-2907



PO BOX 66738 #76520,  
SAINT LOUIS, MO  
63166-6738  
USA

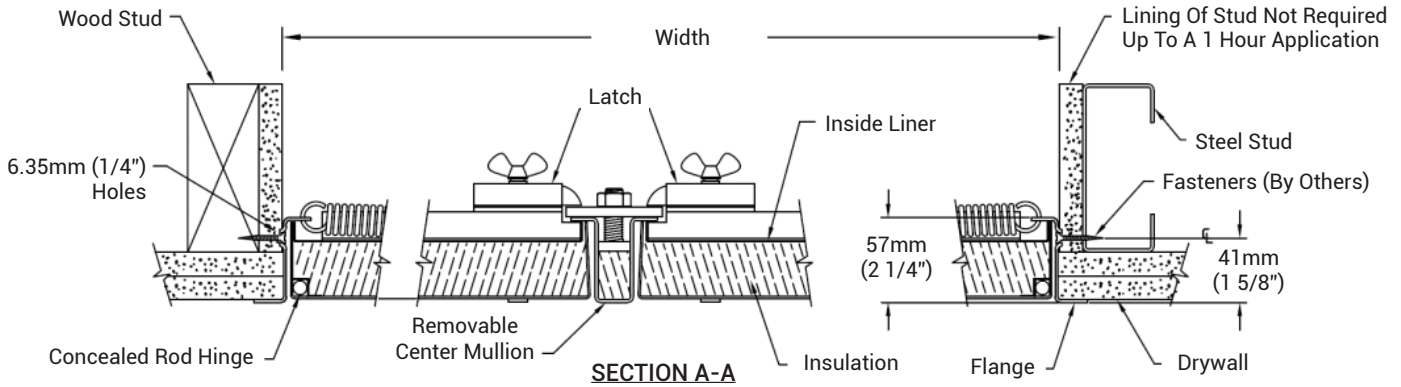


WEBSITE:  
[www.AccessDoorsAndPanels.com](http://www.AccessDoorsAndPanels.com)  
E-MAIL:  
[info@AccessDoorsAndPanels.com](mailto:info@AccessDoorsAndPanels.com)



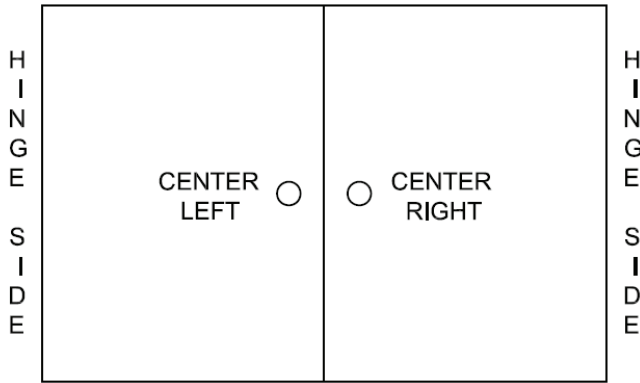
# FD2D

# 2 HOUR FIRE-RATED ACCESS PANEL - DOUBLE DOOR



**SELECT LATCH AND LOCKS BELOW OR ON PAGE 3 :**

**TWO LATCHES**

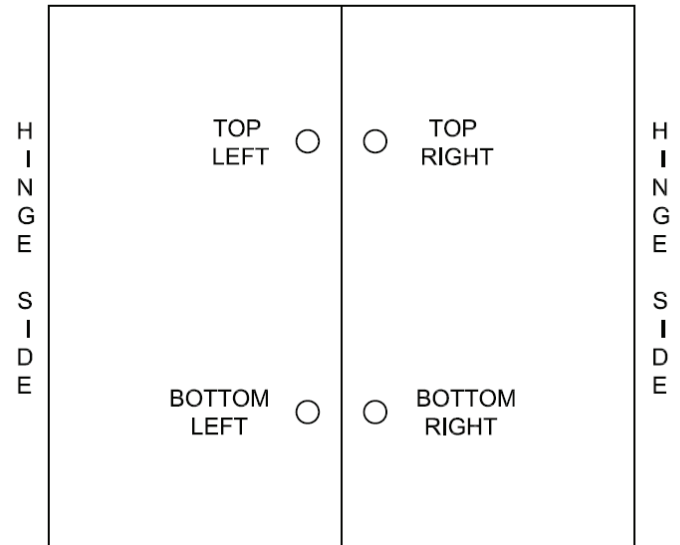


- |                          |   |                          |
|--------------------------|---|--------------------------|
| Center<br>Left           | <b>Latch and Lock Option For Centered Latches</b> | Center<br>Right          |
| <input type="checkbox"/> | 1/4" Allen Key                                    | <input type="checkbox"/> |
| <input type="checkbox"/> | Raised Knurled Knob                               | <input type="checkbox"/> |
| <input type="checkbox"/> | 1-1/8" Mortise Prep*                              | <input type="checkbox"/> |
| <input type="checkbox"/> | 1-1/8" Mortise Prep with Cylinder*                | <input type="checkbox"/> |

Concealed Operator One Side Only - Select Operator for Other Side from Above Options

\* Lock Option at Additional Cost

**FOUR LATCHES**



- |                          |   |                          |
|--------------------------|---|--------------------------|
| Top Left                 | <b>Latch and Lock Options For 4 Latches</b> | Top Right                |
| <input type="checkbox"/> | 1/4" Allen Key                              | <input type="checkbox"/> |
| <input type="checkbox"/> | Raised Knurled Knob                         | <input type="checkbox"/> |
| <input type="checkbox"/> | 1-1/8" Mortise Prep*                        | <input type="checkbox"/> |
| <input type="checkbox"/> | 1-1/8" Mortise Prep with Cylinder*          | <input type="checkbox"/> |
| Bottom Left              | 1/4" Allen Key                              | Bottom Right             |
| <input type="checkbox"/> | Raised Knurled Knob                         | <input type="checkbox"/> |
| <input type="checkbox"/> | 1-1/8" Mortise Prep*                        | <input type="checkbox"/> |
| <input type="checkbox"/> | 1-1/8" Mortise Prep with Cylinder*          | <input type="checkbox"/> |

Concealed Operator One Side Only -Select Operator for Other Side from Above Options  
Example: If Concealed Operator is on Left Door, Select Top Right and Bottom Right Latch/Lock Options

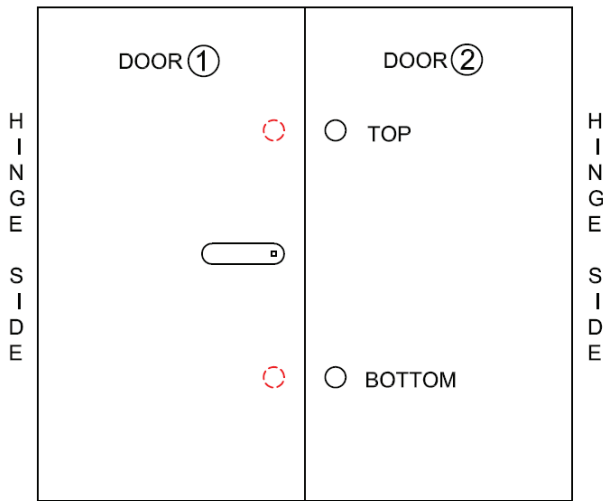


# FD2D

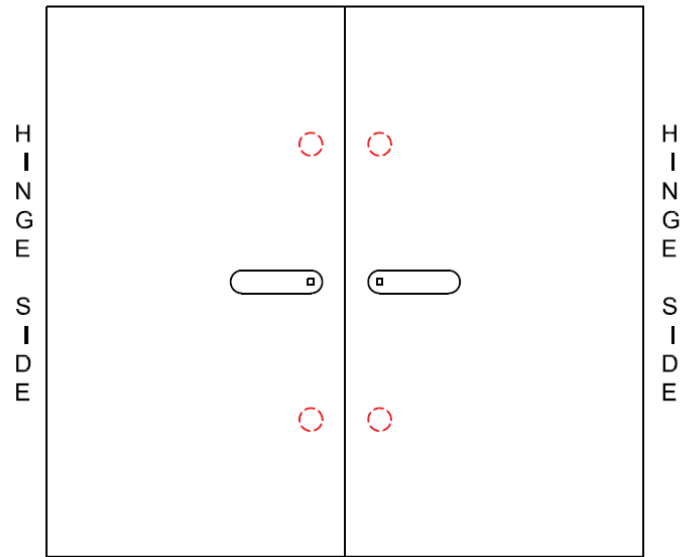
# 2 HOUR FIRE-RATED ACCESS PANEL - DOUBLE DOOR

SELECT LATCH AND LOCKS BELOW OR ON PAGE 2 :

ONE CENTRAL POINT HANDLE - FOUR LATCHES



TWO CENTRAL POINT HANDLES - FOUR LATCHES



**DOOR 1: Central Point Handle Controls**  
Two Concealed Latches on Door (shown in Red)

**DOOR 2: Latch and Lock Options:**

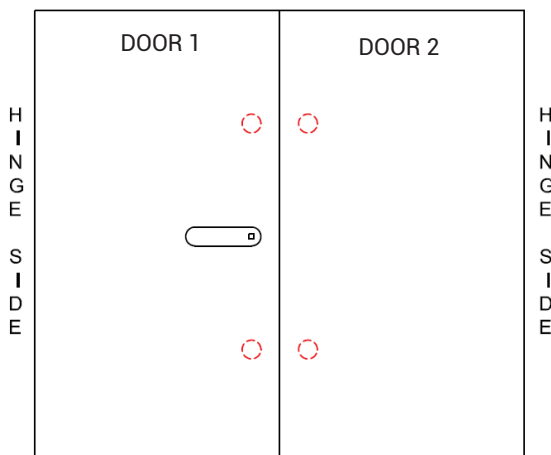
\* Lock Option at Additional Cost

Latch and Lock Option	Top Right
Raised Knurled Knob	<input type="checkbox"/>
1-1/8" Mortise Prep*	<input type="checkbox"/>
1-1/8" Mortise Prep with Cylinder*	<input type="checkbox"/>

Central Point Handle Controls on Both Doors  
Two Concealed Latches on Each Door

Latch and Lock Option	Bottom Right
Raised Knurled Knob	<input type="checkbox"/>
1-1/8" Mortise Prep*	<input type="checkbox"/>
1-1/8" Mortise Prep with Cylinder*	<input type="checkbox"/>

ONE CENTRAL POINT HANDLE - FOUR LATCHES



**DOOR 1**  
Central Point Handle Controls Two Concealed Latches on Door.

**DOOR 2**  
Two Concealed Latches on Door, Operable from the Inside Only.