



High-quality, architecturally pleasing, innovative access doors for walls, ceilings, ducts, floors and roofs



FIRE RATED for WALLS - Recessed for Tile

FB-5060-TD

Application

- Designed for use in tiled walls
- Used whenever it is necessary to provide access in fire rated walls, when temperature rise is not a factor

Product Features

- Recessed 1/2" and is lined with self-furring lath
- Designed to maintain continuity in a 2-hour fire barrier wall
- Self closing
- Self latching
- Inside latch release

FB-5060 Access Door Specifications:

Door: Steel: 16 gauge door with reinforced edges, door panel recessed 1/2" and lined with self-furring lath.

Door Frame: Steel: 16 gauge mounting frame

Hinge: Continuous exposed piano hinge

Fire Rating (Walls): UL — 1-1/2 hour "B" label. ULC — 2 hour "B" label. (optional) Max size 36 x 48

Standard Latch: Universal self-latching bolt, operated by either a knurled knob or flush key. When master keying is required, doors can be prepared for rim or mortise cylinder locks.

Finish: Steel: 5 stage iron phosphate preparation with prime coat of White alkyd baked-on enamel

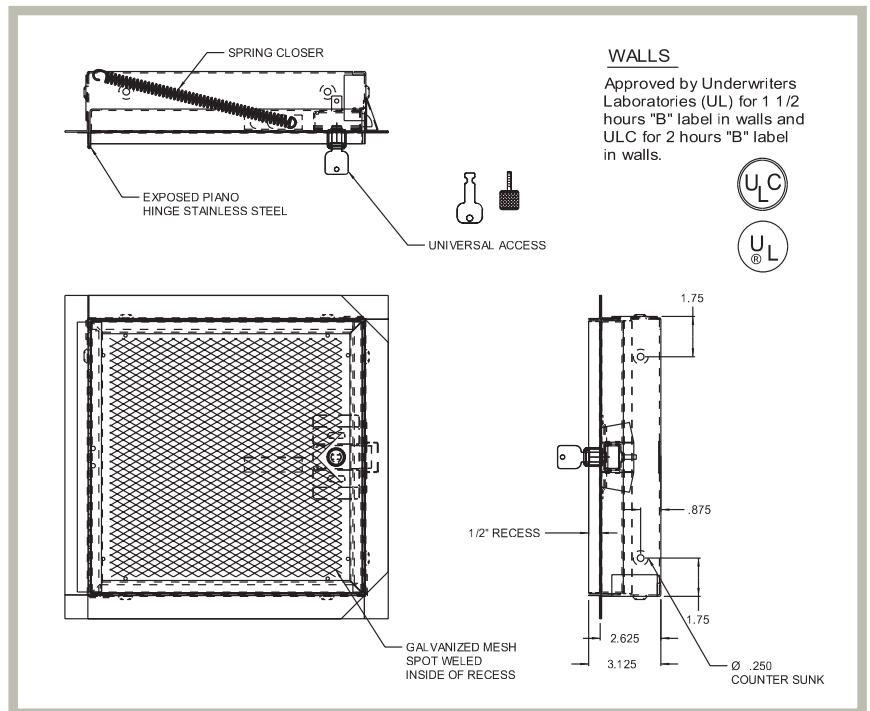


STANDARD SIZES (Special sizes available upon request)

NOMINAL DOOR SIZE W X H		WEIGHT PER DOOR		
inches	mm	Latches	lbs.	kg.
12 X 12	305 X 305	1	8.3	3.8
18 X 18	457 X 457	1	14.3	6.5
24 X 24	610 X 610	1	20.3	9.2

Wall opening is W + 3/8" (9 mm)

For detailed specifications see submittal sheet



[Click here to Online Product Page and Pricing](#)

For more information, contact AccessDoorsAndPanels www.AccessDoorsAndPanels.com

Phone: 1-800-609-2917

Fax: 1-888-626-2907

Email: info@accessdoorsandpanels.com