

## SLK Series



## Shur-Lok Access Doors

Doors are designed for drywall, masonry or concrete construction and provide the security required in today's schools, hospitals, hotels, and correctional institutions.

Door and Frame are fabricated from 14 gage, galvanized steel and the door is provided with a 16 gage vertical reinforcement channel.

Lock is an automatic springbolt type featuring a precision mechanism. When the door is closed in the locked position, the uniquely designed angled cam lock automatically engages. The key can only be removed when the lock is in the locked position.

Hinge is a concealed type. Doors 24" or larger are supplied with a continuous piano hinge.

Finish is a prime coat suitable for painting.

## Guide Specification

Provide Elmdor® SLK Series, Shur-Lok Access Doors (specify model number and options). Access door and Frame shall be fabricated from 14 gage, galvanized steel with a prime coat finish. Door shall have a 16 gage vertical reinforcement channel, a concealed hinge, and an automatic locking, springbolt lock. Finish shall be a prime coat suitable for painting.

**[Click here to Online Product Page and Pricing](#)**



Member of U.S. Green  
Building Council

SLK

Revised: 3/24/09

Recyclable  
Product



MODEL NUMBER AND OPTIONS SELECTION

BASE MODEL NUMBER

SLK Shur-Lok Access Door

Suffix Options

-AS

Automatic Spring Door Closer

-SS

Stainless Steel Construction  
(Type 304 number 4 Satin Finish)

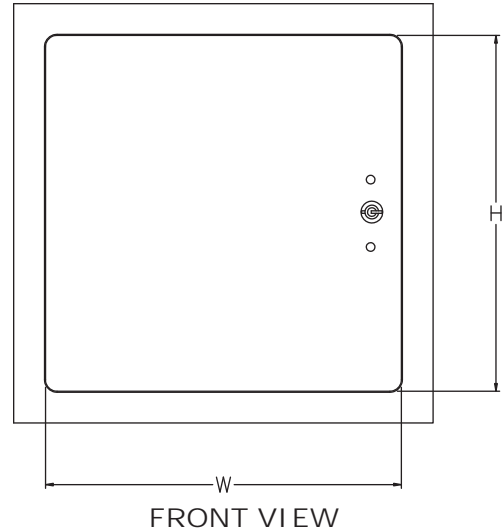
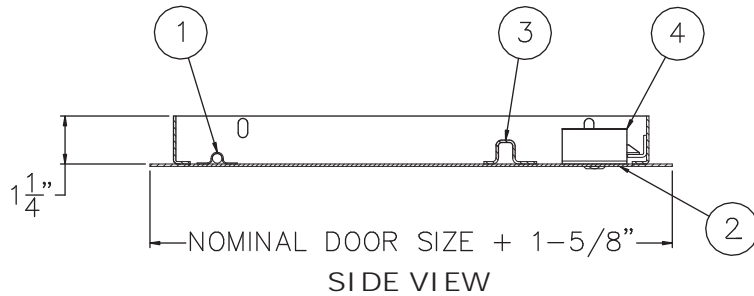
STANDARD AVAILABLE SIZES

Special sizes available upon request.

| NOMINAL DOOR SIZE (W X H) | WALL OPENING (minimum required) | WEIGHT    |
|---------------------------|---------------------------------|-----------|
| SLK 8" x 8"               | 8-1/2" x 8-1/2"                 | 4 lbs.    |
| SLK 10" x 10"             | 10-1/2" x 10-1/2"               | 5.5 lbs.  |
| SLK 12" x 12"             | 12-1/2" x 12-1/2"               | 7 lbs.    |
| SLK 14" x 14"             | 14-1/2" x 14-1/2"               | 8 lbs.    |
| SLK 16" x 16"             | 16-1/2" x 16-1/2"               | 10 lbs.   |
| SLK 18" x 18"             | 18-1/2" x 18-1/2"               | 12 lbs.   |
| SLK 18" x 24"             | 18-1/2" x 24-1/2"               | 16 lbs.   |
| SLK 22" x 22"             | 22-1/2" x 22-1/2"               | 17.5 lbs. |
| SLK 24" x 24"             | 24-1/2" x 24-1/2"               | 20.5 lbs. |
| SLK 24" x 30"             | 24-1/2" x 30-1/2"               | 24 lbs.   |
| SLK 24" x 36"             | 24-1/2" x 36-1/2"               | 28 lbs.   |
| SLK 30" x 30"             | 30-1/2" x 30-1/2"               | 28.5 lbs. |
| SLK 36" x 36"             | 36-1/2" x 36-1/2"               | 41.5 lbs. |

NOTES:

1. CONCEALED HINGE
2. DOOR
3. REINFORCEMENT CHANNEL
4. SPRING DOOR LOCK



[Click here to Online Product Page and Pricing](#)

SELECTION SUMMARY & APPROVAL FOR MANUFACTURING

|  |                |
|--|----------------|
| Model Number & Options _____               | Quantity _____ |
| Company _____                              | Date _____     |
| Contact _____                              | Title _____    |
| Approval for Manufacturing/Signature _____ |                |

SLK

Revised: 3/24/09