

SLA Series



Slammer Access Doors

Doors are designed to provide security access with the strength and durability to withstand abusive and vandal-prone conditions prevalent in many institutions. Without sacrificing security, these doors allow maintenance personnel access to plumbing chases, shut-off valves and electrical apparatus located behind finished walls.

Door is fabricated from 10 gage steel.

Frame is 3/16" x 2" x 2" angle steel, welded and with pre-punched mounting holes.

Latch is a detention type deadbolt lock with paracentric key, when requested.

Hinges are heavy duty and are welded to the door and frame.

Door can be provided with a high security, vandal resistant, detention type lock. Doors are manufactured with locks provided by others.

Finish is a white prime coat suitable for painting.

Guide Specification

Provide Elmdor[®] SLA Series, Slammer Access Doors (specify model number and options). Access Door shall be fabricated from 10 gage steel and frame from 3/16" x 2" x 2" angle steel, welded and with pre-punched mounting holes. Door shall have heavy duty hinges welded to the door and frame. Finish shall be a white prime coat suitable for painting.



MODEL NUMBER AND OPTIONS SELECTION

BASE MODEL NUMBER

SLA Slammer Access Door

Suffix Options

- LD Lock Provided by Others
- MAS Masonry Anchor Straps
- MLP Mortise Cylinder Lock (Prep)
- FA12 Folger Adams #10 lock
- FA12KEY Folger Adams key for #10 lock

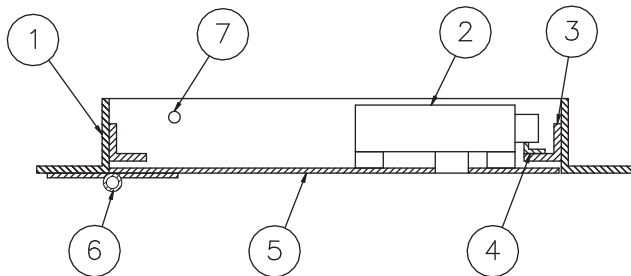
STANDARD AVAILABLE SIZES

Special sizes available upon request.

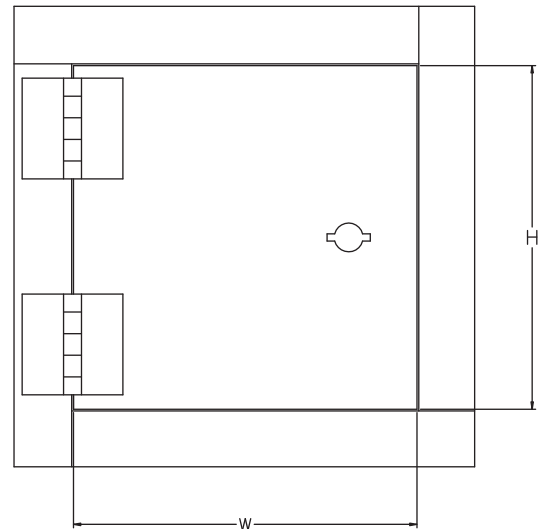
| NOMINAL DOOR SIZE (W X H) | WALL OPENING (minimum required) | WEIGHT |
|------------------------------|------------------------------------|-----------|
| SLA 12" x 12" | 12-1/2" x 12-1/2" | 29 lbs. |
| SLA 16" x 16" | 16-1/2" x 16-1/2" | 37 lbs. |
| SLA 18" x 18" | 18-1/2" x 18-1/2" | 42 lbs. |
| SLA 24" x 24" | 24-1/2" x 24-1/2" | 59 lbs. |
| SLA 24" x 36" | 24-1/2" x 36-1/2" | 78.5 lbs. |
| SLA 24" x 48" | 24-1/2" x 48-1/2" | 96 lbs. |
| SLA 36" x 36" | 36-1/2" x 36-1/2" | 102 lbs. |
| SLA 36" x 48" | 36-1/2" x 48-1/2" | 126 lbs. |

NOTES:

1. FRAME
2. HEAVY DUTY LOCK
3. DOOR STOP
4. LOCK KEEPER
5. DOOR
6. HEAVY DUTY HINGE
7. MOUNTING HOLES



SIDE VIEW



FRONT VIEW

Dimensions are subject to manufacturer's tolerance of plus or minus 1/4". Elmdor/Stoneman assumes no responsibility for use of void or suspended data. Please visit www.elmdorstoneman.com for most current specifications. © Copyright 2009 Elmdor/Stoneman, City of Industry, CA, A Division of Acorn Engineering Company.

SELECTION SUMMARY & APPROVAL FOR MANUFACTURING

| | |
|--|----------------|
| Model Number & Options _____ | Quantity _____ |
| Company _____ | Date _____ |
| Contact _____ | Title _____ |
| Approval for Manufacturing/Signature _____ | |

SLA

Revised: 09/02/14