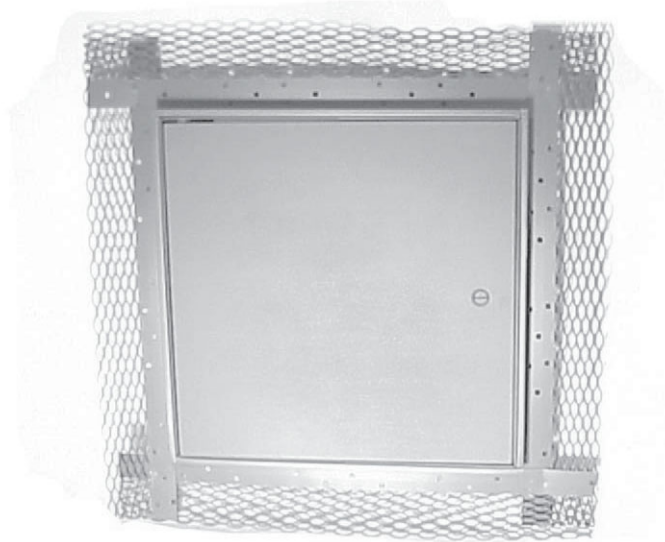


ML Series



Metal Lath Access Doors

Doors are designed specifically to meet the needs of plaster construction. Door has a 3" wide metal lath on all four sides for keying into plaster.

Door and Frame are fabricated from 16 gage, galvanized steel.

Concealed Pivoting Rod Hinge prevents distortion and closes door squarely. Doors 24" or larger are provided with a continuous piano hinge.

Latch is screwdriver operated.

Finish is a prime coat suitable for painting.

Guide Specification

Provide Elmdor[®] ML Series, Metal Lath Access Doors (specify model number and options). Access door and frame shall be fabricated from 16 gage, galvanized steel with a prime coat finish. Door shall have a concealed pivoting rod hinge. Latch shall be screwdriver operated. Finish shall be a prime coat suitable for painting.

[Click here to Online Product Page and Pricing](#)



*Elmdor/Stoneman is a Member
of U.S. Green Building Council*

ML

Revised: 3/24/09

*Stainless Steel
is Recyclable*



MODEL NUMBER AND OPTIONS SELECTION

BASE MODEL NUMBER

ML Metal Lath Access Door

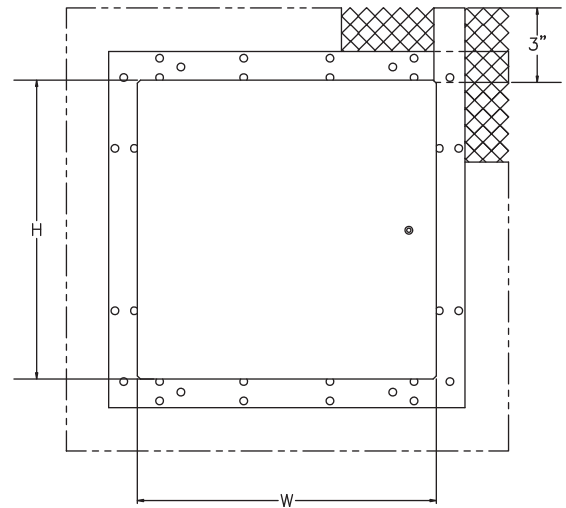
Suffix Options

- AKL Allen Key Latch
- CL Cylinder Lock (one per door)
- SS Stainless Steel Construction.
(Type 304 No 4 Finish Satin Finish)

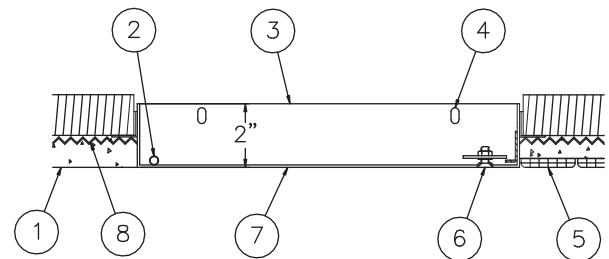
STANDARD AVAILABLE SIZES

Special sizes available upon request.

NOMINAL DOOR SIZE (W X H)	WALL OPENING (minimum required)	LATCHES	WEIGHT
ML 8" x 8"	8-1/4" x 8-1/4"	1	4 lbs.
ML 8" x 12"	8-1/4" x 12-1/4"	1	5.5 lbs.
ML 10" x 10"	10-1/4" x 10-1/4"	1	5.5 lbs.
ML 12" x 12"	12-1/4" x 12-1/4"	1	6.5 lbs.
ML 12" x 16"	12-1/4" x 16-1/4"	1	9 lbs.
ML 12" x 18"	12-1/4" x 18-1/4"	1	10 lbs.
ML 12" x 24"	12-1/4" x 24-1/4"	2	11.5 lbs.
ML 14" x 14"	14-1/4" x 14-1/4"	2	8 lbs.
ML 16" x 16"	16-1/4" x 16-1/4"	2	11 lbs.
ML 16" x 20"	16-1/4" x 20-1/4"	2	12.5 lbs.
ML 18" x 18"	18-1/4" x 18-1/4"	2	13 lbs.
ML 18" x 24"	18-1/4" x 24-1/4"	2	20 lbs.
ML 20" x 24"	20-1/4" x 24-1/4"	2	22 lbs.
ML 20" x 30"	20-1/4" x 30-1/4"	3	23.5 lbs.
ML 24" x 24"	24-1/4" x 24-1/4"	3	21 lbs.
ML 24" x 30"	24-1/4" x 30-1/4"	3	24.5 lbs.
ML 24" x 36"	24-1/4" x 36-1/4"	3	29.5 lbs.
ML 30" x 30"	30-1/4" x 30-1/4"	3	25.5 lbs.
ML 36" x 36"	36-1/4" x 36-1/4"	3	28 lbs.



FRONT VIEW



SIDE VIEW

NOTES:

1. FINISH LINE, PLASTER OVER MASONRY
2. CONCEALED PIVOTING ROD HINGE
3. FRAME
4. MOUNTING HOLES
5. CERAMIC TILE OVER PLASTER
6. SCREWDRIVER OPERATED LATCH
7. DOOR
8. METAL LATHE

[Click here to Online Product Page and Pricing](#)

SELECTION SUMMARY & APPROVAL FOR MANUFACTURING

Model Number & Options _____	Quantity _____
Company _____	Date _____
Contact _____	Title _____
Approval for Manufacturing/Signature _____	

ML

Revised: 3/24/09