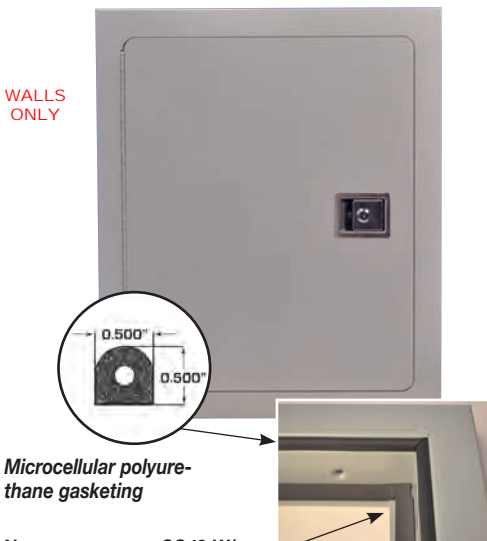


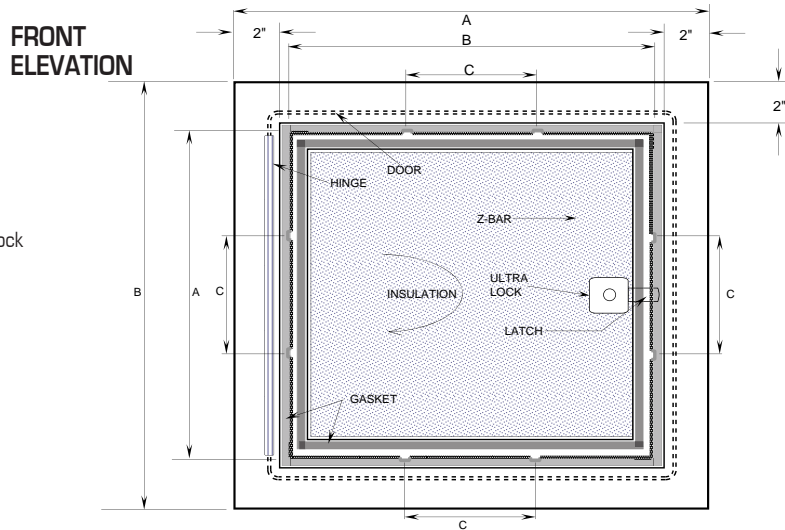
DETAIL & SUBMITTAL SHEET



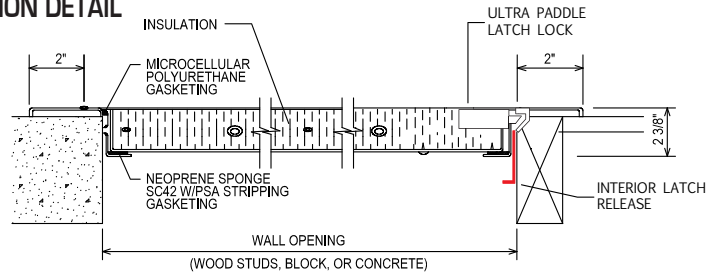
Microcellular polyurethane gasketing

Neoprene sponge SC42 W/ PSA stripping gasketing applied on back inside edge

Ultra lock option



SECTION DETAIL



SPECIFICATIONS:

- Door:** 16 ga. steel. Trim 1 1/2" wide
- Frame:** 16 ga. steel, 2 3/8" depth
- Gasketing:** Open celled microcellular polyurethane on inside of door and closed cell neoprene sponge SC42 W/PSA stripping gasketing on the back of the door
- Insulation:** Double layer of 1" GreenGuard® Extruded Polystyrene insulation board, with R-Value @ 75°F Mean 5.0 x 2, FM approved*
- Hinges:** Continuous piano hinge. Allows opening to 180°.
- Latches:** Ultra paddle latch lock and slam catch with 151 keycode, and interior latch release
- Finish:** Zinc dipped baked grey enamel
- Application:** For exterior purposes, weather resistive

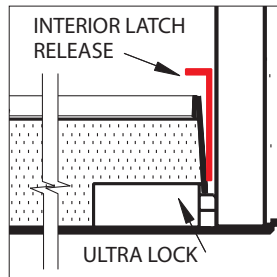
OPTIONS (at additional cost)

- Special sizes available
-

✓	Item No.	Door Size W x H	Wall Opening *	Ship Wt. Lbs.
	EXT 1350	12 x 12	12 1/4 x 12 1/4	27
	EXT 1350	14 x 14	14 1/4 x 14 1/4	30
	EXT 1350	16 x 16	16 1/4 x 16 1/4	35
	EXT 1350	18 x 18	18 1/4 x 18 1/4	40
	EXT 1350	22 x 30	22 1/4 x 30 1/4	45
	EXT 1350	22 x 36	22 1/4 x 36 1/4	50
	EXT 1350	24 x 24	24 1/4 x 24 1/4	55
	EXT 1350	24 x 36	24 1/4 x 36 1/4	67
	EXT 1350	30 x 36	30 1/4 x 36 1/4	79
	EXT 1350	36 x 36	36 1/4 x 36 1/4	90

* For wall opening sizes see elevation drawing above.

Ultra Paddle Latch lock



Click here to Online Product Page and Pricing

The one of a kind exterior access door is zinc dipped, insulated with 1" GreenGuard and includes two types of gasketing. Weather resistive open celled microcellular polyurethane gasketing and closed cell neoprene sponge SC42 W/PSA stripping gasketing on inside for outdoor applications (certain saltwater areas might not be compatible).

* GreenGuard® Extruded Polystyrene insulation board, with R-Value @ 75°F Mean 5.0 x 2. R means resistance to heat flow. The higher the R-Value the greater the insulating power and energy saving capability. Compliance: BOCA 90-78, SBCCI 2228A, ICBO 4280, CA BHF TB 1334, MN Dept. of Energy Chapter 7640, CCMC 12722-L, Und. Lab. Inc.® See Classification Certificate A183. FM Approved.

AccessDoorsAndPanels

Phone: 1-800-609-2917 Email: info@accessdoorsandpanels.com
 Fax: 1-888-626-2907 Website: www.AccessDoorsAndPanels.com
 PO Box 66738 #76520, Saint Louis, MO 63166 6738



www.AccessDoorsAndPanels.com