

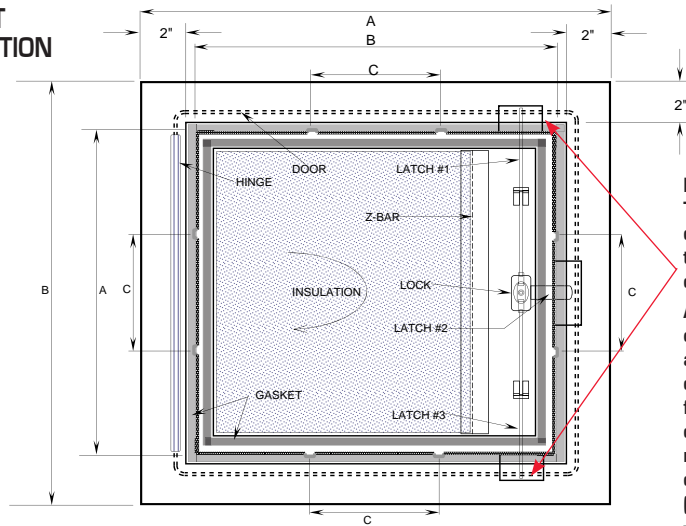
DETAIL & SUBMITTAL SHEET



Microcellular polyurethane gasketing

Neoprene sponge SC42 W/ PSA stripping gasketing applied on back inside edge

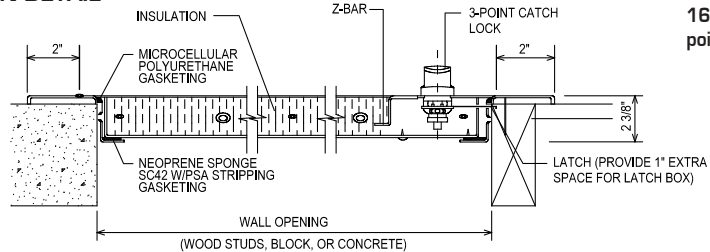
FRONT ELEVATION



NOTE:
The 3 prong handle protrudes at top and bottom of door.
Allow a 1-1/2" cut out on the top and bottom edge of wood or steel frame or the wall opening can be made 1/4" larger on the long side, (B).

The 12 x 12, 14 x 14 and 16 x 16 have a single point catch.

SECTION DETAIL



SPECIFICATIONS:

Door: 16 ga. steel. Trim 1 1/2" wide

Frame: 16 ga. steel, 2 3/8" depth

Gasketing: Open celled microcellular polyurethane on inside of door and closed cell neoprene sponge SC42 W/PSA stripping gasketing on the back of the door

Insulation: Double layer of 1" GreenGuard® Extruded Polystyrene insulation board, with R-Value @ 75°F Mean 5.0 x 2, FM approved*

Hinges: Continuous piano hinge. Allows opening to 180°.

Latches: Chrome plated "T" type handle with pivot rod 3 point catch. WB 151 key code cylinder lock. **Opens with the outside handle only.**

Finish: Zinc dipped baked grey enamel

Application: For exterior purposes, weather resistive

The one of a kind exterior access door is zinc dipped, insulated with 1" GreenGuard and includes two types of gasketing. Weather resistive open celled microcellular polyurethane gasketing and closed cell neoprene sponge SC42 W/PSA stripping gasketing on inside for outdoor applications (certain saltwater areas might not be compatible).

✓	Item No.	Door Size W x H	Wall Opening *	Ship Wt. Lbs.
	EXT 1300	12 x 12	12 1/4 x 12 1/4	27
	EXT 1300	14 x 14	14 1/4 x 14 1/4	30
	EXT 1300	16 x 16	16 1/4 x 16 1/4	35
	EXT 1300	18 x 18	18 1/4 x 18 1/4	40
	EXT 1300	22 x 30	22 1/4 x 30 1/4	45
	EXT 1300	22 x 36	22 1/4 x 36 1/4	50
	EXT 1300	24 x 24	24 1/4 x 24 1/4	55
	EXT 1300	24 x 36	24 1/4 x 36 1/4	67
	EXT 1300	30 x 36	30 1/4 x 36 1/4	79
	EXT 1300	36 x 36	36 1/4 x 36 1/4	90

Limited availability.

* For wall opening sizes see elevation drawing above.

[Click here to Online Product Page and Pricing](#)

AccessDoorsAndPanels

Phone: 1-800-609-2917

Email: info@accessdoorsandpanels.com

Fax: 1-888-626-2907

Website: www.AccessDoorsAndPanels.com

PO Box 66738 #76520, Saint Louis, MO 63166 6738



www.AccessDoorsAndPanels.com