

SUBMITTAL/TECHNICAL DATA SHEET



SPECIFICATIONS

01. Thermally broken curb with integral capflashing 11 ga. aluminum (Corners fully welded)
02. Thermally broken cover-11 ga. aluminum
03. Cover liner-18 ga. aluminum
04. 3" [75mm] polyisocyanurate curb insulation
05. 3" [75mm] polyisocyanurate curb insulation
06. EPDM gasket (All around cover)
07. Pintle hinge - Stainless steel type 316
08. Bilclip® flashing system
09. Slam latch with inside and outside handles with padlock hasps
10. Lock strike and padlock hasp
11. Lifting mechanism with reinforced composite tubes and compression springs
12. Automatic hold open arm with Red vinyl grip and cover release
13. Arm guide bracket

SHOP FINISH

ALUMINIUM: Mill finish
HARDWARE: Corrosion resistant
(Unless otherwise specified)

NOTES:

This product may be installed on either a flat or sloping roof. When installed on a slope, the hinge side must run parallel with the slope. If slope exceeds 30°, advise factory for modification.

For a complete list of options visit www.AccessDoorsAndPanels.com

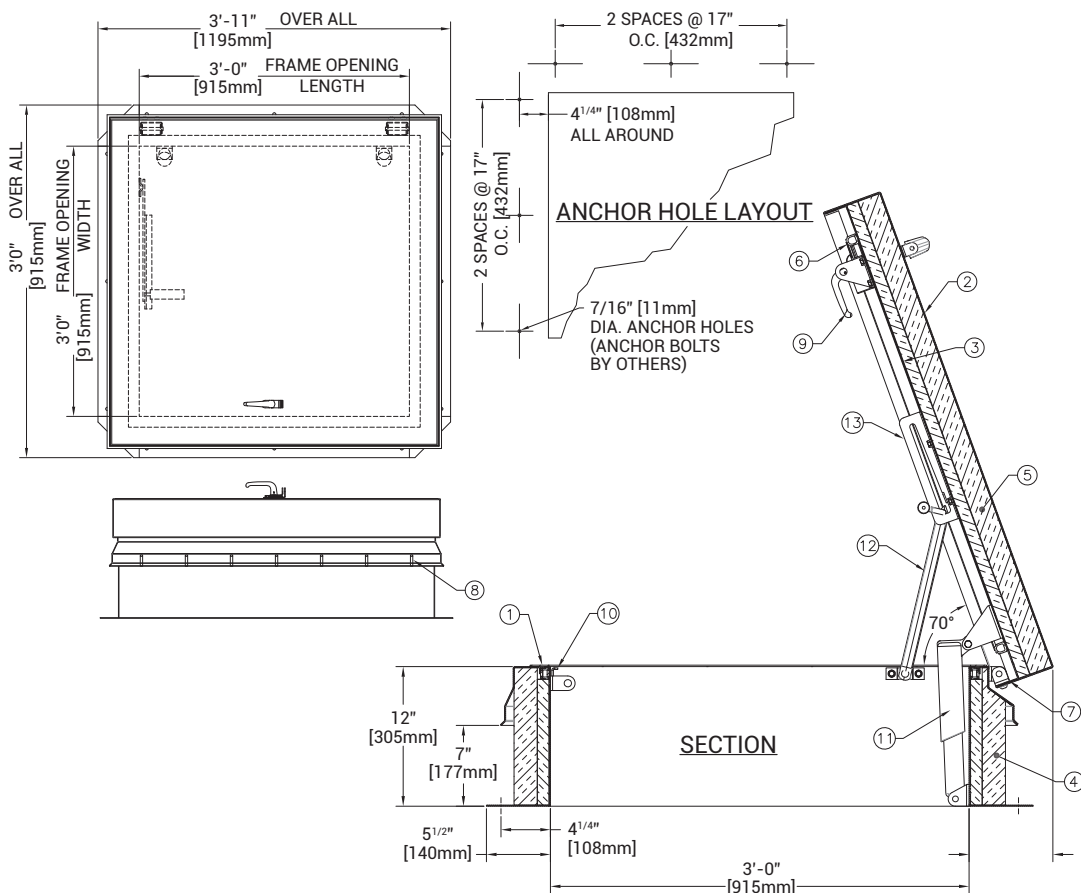


SKU: **E-50TB**

SINGLE LEAF ROOF ACCESS HATCH

DIMENSIONS AND APPEARANCE

>> CLICK TO VIEW ADDITIONAL DETAILS AND PRICING <<



QTY TYPE SIZE WIDTH X LENGTH

E-50TB 3'-0" X 3'-0" 915mm X 915mm HINGE SIDE

PROJECT DATA

Custom Sizes Available - Fast!

| | | | | |
|------------------------|---|---|---|---------|
| PROJECT NAME : | QTY | W | H | OPTIONS |
| ARCHITECT : | | | | |
| DEALER : | | | | |
| CONTRACTOR : | | | | |
| LOCATION : | SPECIAL INSTRUCTIONS : | | | |
| DATE : | | | | |
| TAGGING INSTRUCTIONS : | SUBMITTAL APPROVAL : (signature or stamp) | | | |

Scan or Click



To view Pricing and Additional Product Info.

TELEPHONE: 1-888-457-1275
FAX: 1-888-626-2907



PO BOX 66738 #76520,
SAINT LOUIS, MO
63166-6738
USA



WEBSITE: www.AccessDoorsAndPanels.com
E-MAIL: info@AccessDoorsAndPanels.com