



High-quality, architecturally pleasing, innovative access doors for walls, ceilings, ducts, floors and roofs



RECESSED Drywall Panel Door DW-5058

Application

- Designed to provide access in walls and ceilings, while maintaining an invisible, architecturally pleasing appearance

Product Features

- Designed to accommodate 5/8" drywall, the frame can be reversed to accommodate 1/2" drywall
- Standard with a touch latch feature

DW-5058 Access Door Specifications:

Door: .080 aluminum extrusion with 5/8" drywall inserted into door panel

Door Frame: .080 aluminum extrusion recessed to provide similar edge to drywall bead to allow for finishing of wall or ceiling surface.

Hinge: Spring loaded hinge pin allows door panel to open to 90 degrees, and also allows for door panel to be removed from frame. Safety chain installed on door & frame for safety.

Standard Latch: Concealed Touch Latches

Optional Latches/Locks: Screwdriver operated cam latch, allen head cam latch, spanner head cam latch, cylinder lock & key.

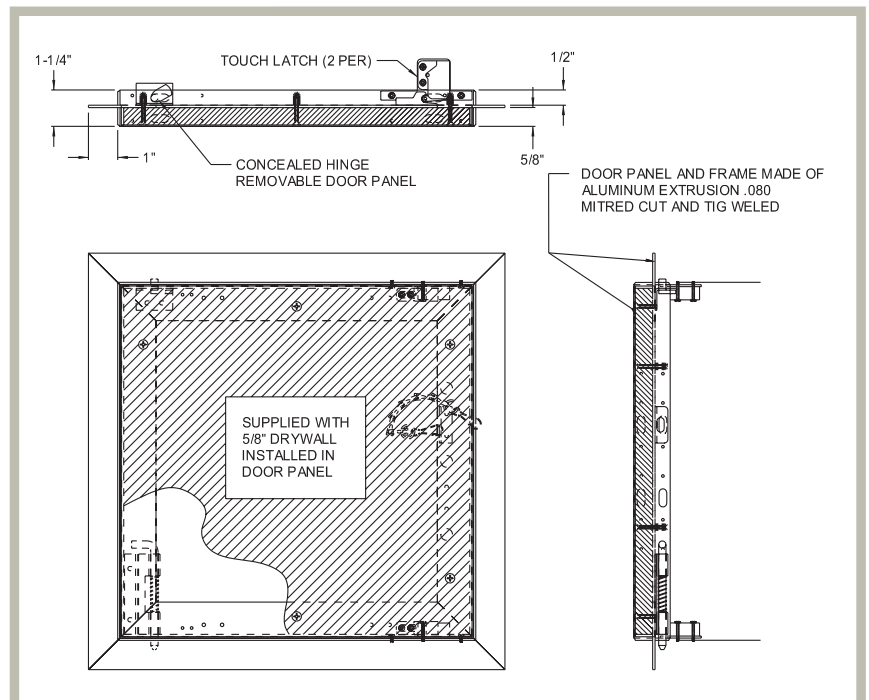
Finish: Mill Finish. Drywall is ready to be finished to match surrounding wall or ceiling surface.



AVAILABLE SIZES (Special sizes available upon request)

NOMINAL DOOR SIZE W X H		WEIGHT PER DOOR	
inches	mm	lbs.	kg.
12 X 12	305 X 305	2.0	0.9
16 X 16	406 X 406	5.0	2.3
18 X 18	457 X 457	6.0	2.7
24 X 24	610 X 610	12.0	5.5
24 X 36	610 X 914	21.0	9.5

Wall or ceiling opening is W + 1/2" (12 mm)
For detailed specifications see submittal sheet



[Click here to Online Product Page and Pricing](#)

For more information, contact AccessDoorsAndPanels www.AccessDoorsAndPanels.com

Phone: 1-800-609-2917

Fax: 1-888-626-2907

Email: info@accessdoorsandpanels.com