

# DW-5058-1

Recessed Access door for 1/2" drywall,  
*Drywall Panel Door*

## Application

- Designed to provide access in walls and ceilings, while maintaining an invisible, architecturally pleasing appearance

## Product Features

- Designed for installation in 1/2" drywall
- Aluminum Extrusion Door & Frame
- Powder Painted
- Dust seal gasket
- Concealed Touch latch

## DW-5058-1 Access Door Specifications:

**Material:** Aluminum extrusion with drywall fitted in door panel

**Door Frame:** Aluminum extrusion 6063-T6 recessed to provide similar edge to drywall bead to allow for finishing of wall or ceiling surface.

**Hinge:** Wing hinge allows door panel to open to 90 degrees, and also allows for door panel to be removed from frame. Safety chain installed on door & frame for safety.

**Gasket:** Dust seal gasket

**Standard Latch:** Concealed Touch Latches

**Optional Latches/Locks:** Screwdriver operated cam latch, allen head cam latch, spanner head cam latch, cylinder lock & key.

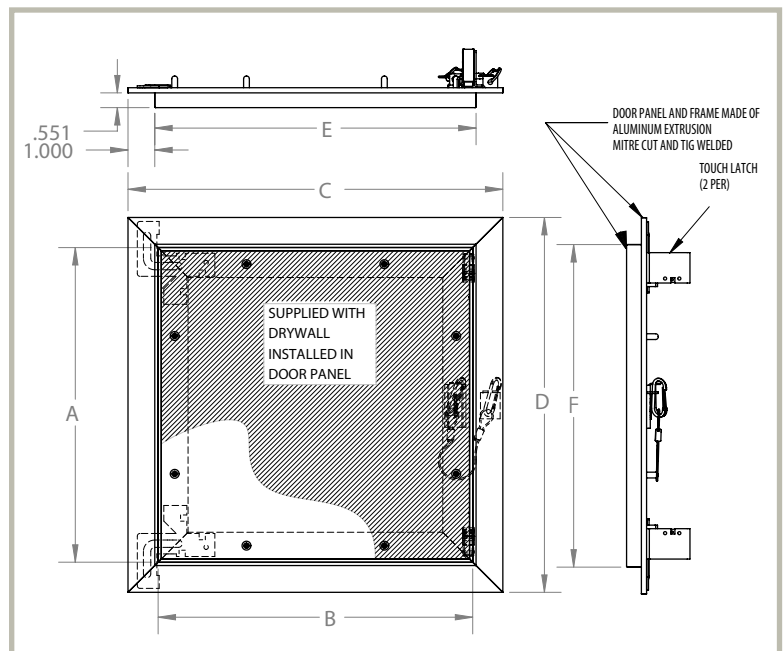
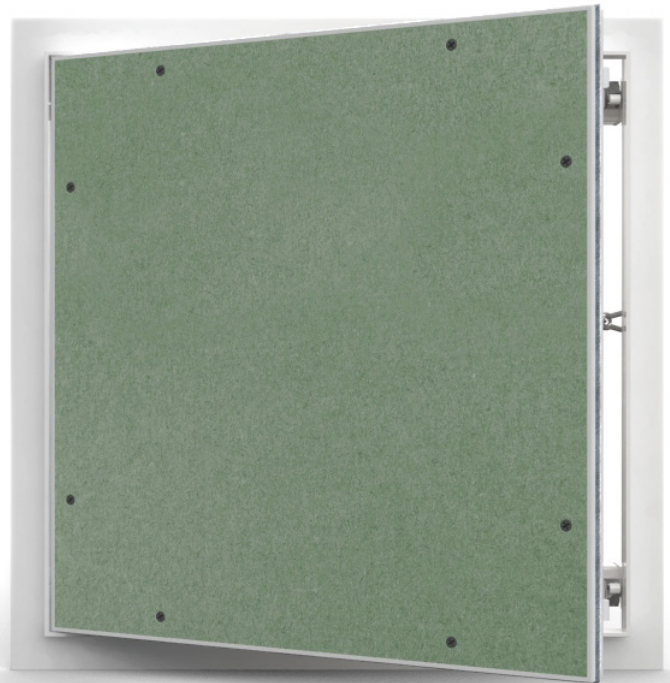
**Finish:** Powder Painted White

## STANDARD SIZES *(other sizes available upon request)*

Nominal Door Size W&H		Weight per Door	
inches	mm	lbs.	kg.
8 x 8	203 x 203	1.5	0.7
12 x 12	305 x 305	2.0	0.9
16 x 16	406 x 406	5.0	2.3
18 x 18	457 x 457	6.0	2.7
24 x 24	610 x 610	12.0	5.5
24 x 36	610 x 914	21.0	9.5

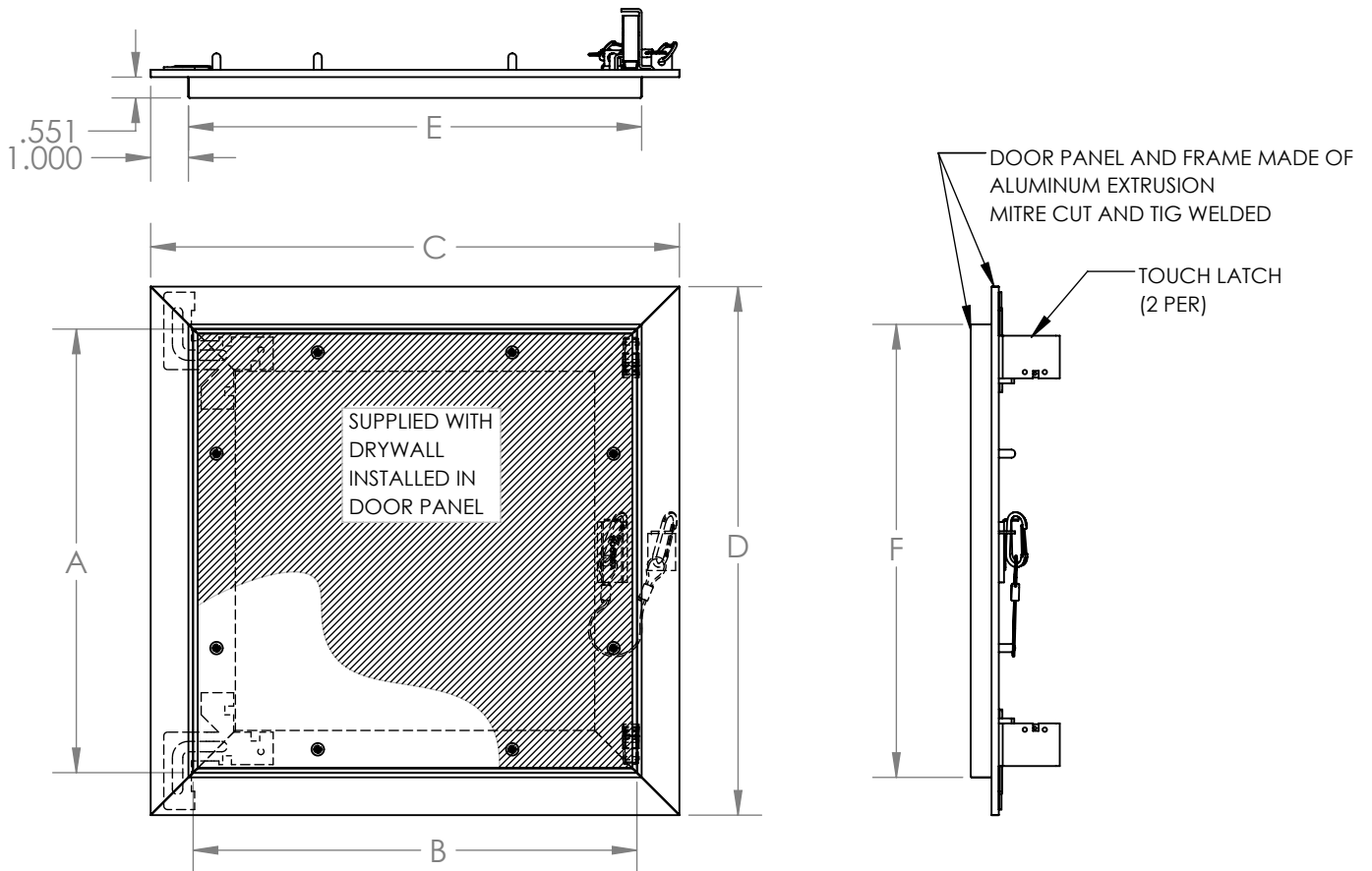
Wall opening is normal door size plus +1/2" (12mm)

For detailed specifications see submittal sheet



## RECESSED WITH DRYWALL

QTY	NOMINAL SIZE	A	B	C	D	E	F	LOCK
	8 X 8 (203 X 203)	7.750	7.750	10.000	10.000	8.000	8.000	2
	12 x 12 (305 x 305)	11.750	11.750	14.000	14.000	12.000	12.000	2
	16 x 16 (406 x 406)	15.750	15.750	18.000	18.000	16.000	16.000	2
	18 x 18 (457 x 457)	17.750	17.750	20.000	20.000	18.000	18.000	2
	24 x 24 (610 x 610)	23.750	23.750	26.000	26.000	24.000	24.000	2
	24 x 36 (610 x 914)	23.750	35.750	26.000	38.000	24.000	36.000	2



STANDARD FEATURES:  
 TOUCH LATCH; REMOVABLE DOOR PANEL;  
 SUITABLE FOR INSTALLATION IN 1/2" DRYWALL;  
 ALUMINUM DOOR AND FRAME POWDER PAINTED;  
 DOORS OVER 12" X 12" HAVE SAFETY CHAIN;  
 DUST SEAL GASKET.

- OPTIONS: LOCK TYPE
- SCREWDRIVER OPERATED CAM LATCH
  - ALLEN HEAD CAM LATCH
  - SPANNER HEAD CAM LATCH
  - CYLINDER LOCK & KEY

JOB NAME:  
 CUSTOMER:

APPROVED BY:  
 DATE: