

SUBMITTAL/TECHNICAL DATA SHEET



SKU: **D-90**

DOUBLE LEAF ROOF SCUTTLE

TYPE D



SPECIFICATIONS

01. Frame w/ flashing (corners full welded)
 - D-20 - 14 gauge P.B. Galv. Steel
 - D-40 - 14 gauge P.B. Galv. Steel
 - D-50 - 11 gauge aluminum
02. Pintle hinge
03. Gasket (all around cover)
04. Cover gauge
 - D-20 - 14 gauge P.B. Galv. Steel
 - D-40 - 11 gauge aluminum
 - D-50 - 11 gauge aluminum
05. Cover liner
 - D-20 - 22 gauge P.B. Galv. Steel
 - D-40 - 18 gauge aluminum
 - D-50 - 18 gauge aluminum
06. Lifting mechanism with reinforced composite tubes and compression springs.
07. 1" rigid fiberboard insulation
08. Slam latch (2 Point)
09. Inside and outside handles with padlock hasps
10. Arm guide bracket
11. 1" thick fiberglass cover insulation
12. Hold open arm with red vinyl grip
13. Neoprene gasket
14. Guide arm
15. Bilclip® flashing system

SHOP FINISH:

STEEL: Red oxide primer

ALUMINUM: Mill finish

HARDWARE:

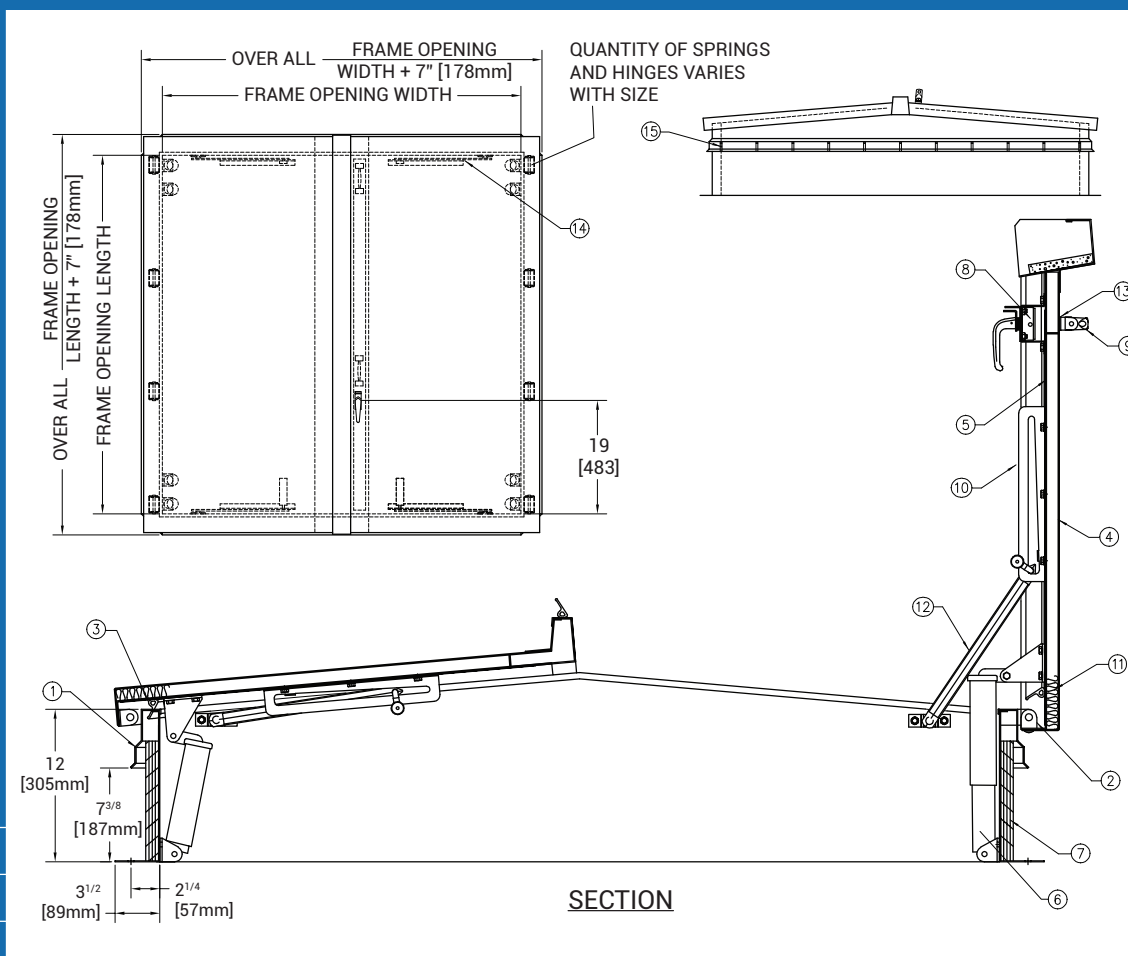
Zinc plated & Chromate sealed

(Unless otherwise specified)

This product may be installed on either a flat or sloping roof. When installed on a slope, the hinge side must run parallel with the slope. If slope exceeds 30°, advise factory for modification

■ DIMENSIONS AND APPEARANCE

>> CLICK TO VIEW ADDITIONAL DETAILS AND PRICING <<



For a complete list of options visit www.AccessDoorsAndPanels.com

QTY	TYPE	SIZE (INCHES) WIDTH X LENGTH	METAL
<input type="checkbox"/>	D-20	<input type="text"/>	STEEL COVER OR STEEL FRAME
<input type="checkbox"/>	D-40	<input type="text"/>	ALUM. COVER OR STEEL FRAME
<input type="checkbox"/>	D-50	<input type="text"/>	ALUM. COVER OR ALUM. FRAME

■ PROJECT DATA

Custom Sizes Available - Fast!

PROJECT NAME :	QTY	W	H	OPTIONS
ARCHITECT :				
DEALER :				
CONTRACTOR :				
LOCATION :	SPECIAL INSTRUCTIONS :			
DATE :				
TAGGING INSTRUCTIONS :	SUBMITTAL APPROVAL : (signature or stamp)			

Scan or Click



To view Pricing and Additional Product Info.

TELEPHONE:
1-888-457-1275
FAX:
1-888-626-2907



PO BOX 66738 #76520,
SAINT LOUIS, MO
63166-6738
USA



WEBSITE:
www.AccessDoorsAndPanels.com
E-MAIL:
info@AccessDoorsAndPanels.com