

## DESCRIPTION

Insulated Fire-Rated Access Door  
Designed for wall and ceiling applications, this fire-rated Insulated Access Door is UL & Warnock-Hersey listed. Engineered with mineral fiber to assist in reducing heat transfer in the event of a fire.

## FEATURES

- Fire Rating
- Self-Closing
- Easy Operation
- Custom Sizing

## SPECIFICATIONS

MODEL: BIT/BIW/BIP

DOOR: 20 gauge Steel

FRAME: 20 gauge Steel

SIZE:

Min: 6 inches by 6 inches

BIT: Max: 24 inches by 72 inches or 48 inches by 48 inches

BIW/BIP: Max: 36 inches by 48 inches

INSTALLATION: Wall or Ceiling

FLANGE: 1 inch Exposed, Drywall Bead or Plaster Bead

HINGE:

BIT: Flush Continuous Piano

BIW/BIP: Concealed Pin

INSULATION: 2 inch Fire-Rated Mineral Fiber; R-8

CERTIFICATION: UL listed "B" label for 1-1/2 hours (vertical)  
Warnock-Hersey listed for 3 hours (horizontal); 24 inches by 36 inches maximum size

FINISH: White Powder Coat

WARRANTY: 1 year

OPTIONS: Flanges, Latches, Materials, Gaskets, Anchors

For a complete list of options visit  
[www.AccessDoorsAndPanels.com](http://www.AccessDoorsAndPanels.com)

SKU: **BIW**

## INSULATED FIRE-RATED ACCESS DOOR



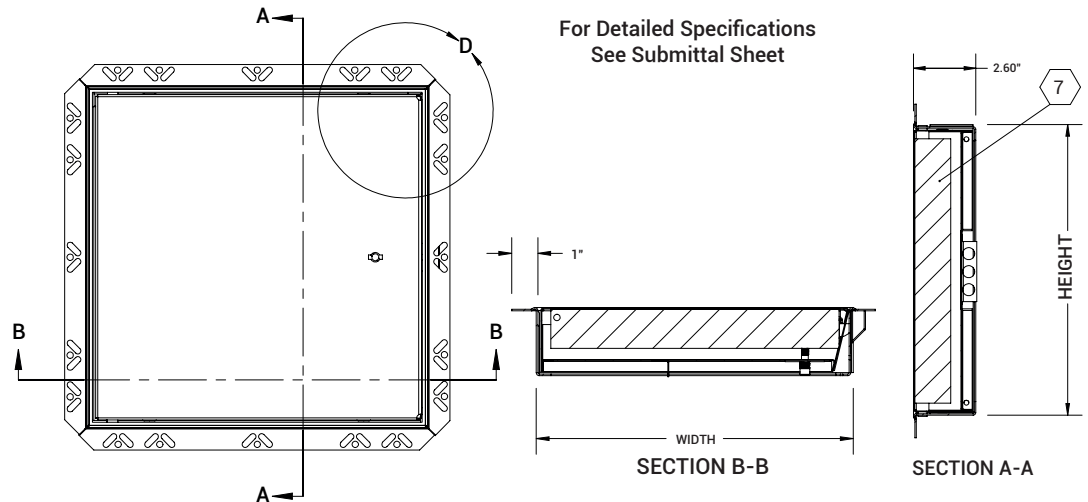
## DIMENSIONS AND APPEARANCE

>> CLICK TO VIEW ADDITIONAL DETAILS AND PRICING <<

### ORDER GUIDE:

| BASE | FLANGE          | LATCH                                  | WIDTH                  | X         | LENGTH      | OPTIONS                    |
|------|-----------------|--|------------------------|-----------|-------------|----------------------------|
| BI   |                 |  |                        |           |             |                            |
|      | T 1 inch Flange | K Knurled Knob/Key Operated Latch Bolt | STANDARD SIZES (W X L) |           |             | B Galvannealed             |
|      | W Drywall Bead  | M Mortise Lock (1-1/8") Prep           | 8" X 8"                | 18" X 24" | 24" X 48" * | G Gasketing                |
|      | P Plaster Bead  |  | 10" X 10"              | 20" X 30" | 30" X 30" * | M Masonry Anchors          |
|      |                 |  | 12" X 12"              | 22" X 22" | 32" X 32" * | S Type 304 Stainless Steel |
|      |                 |  | 12" X 18"              | 22" X 30" | 36" X 36" * |                            |
|      |                 |  | 12" X 24"              | 22" X 36" | 36" X 48" * |                            |
|      |                 |  | 14" X 14"              | 24" X 24" | 48" X 48" * |                            |
|      |                 |  | 16" X 16"              | 24" X 30" |             |                            |
|      |                 |  | 18" X 18"              | 24" X 36" |             |                            |

Rough opening is door size + 1/4 inch minimum. Additional sizes available, call for more information.  
\*Wall application only.



## PROJECT DATA

Custom Sizes Available - Fast!

|                        |  |   |   |         |
|------------------------|--|---|---|---------|
| PROJECT NAME :         | QTY  | W | H | OPTIONS |
| ARCHITECT :            |  |   |   |         |
| DEALER :               |  |   |   |         |
| CONTRACTOR :           |  |   |   |         |
| LOCATION :             | SPECIAL INSTRUCTIONS :                       |   |   |         |
| DATE :                 | SUBMITTAL APPROVAL :<br>(signature or stamp) |   |   |         |
| TAGGING INSTRUCTIONS : |  |   |   |         |

Scan  or 



To view Pricing and  
Additional Product Info.



TELEPHONE:  
1-888-457-1275  
FAX:  
1-888-626-2907



PO BOX 66738 #76520,  
SAINT LOUIS, MO  
63166-6738  
USA

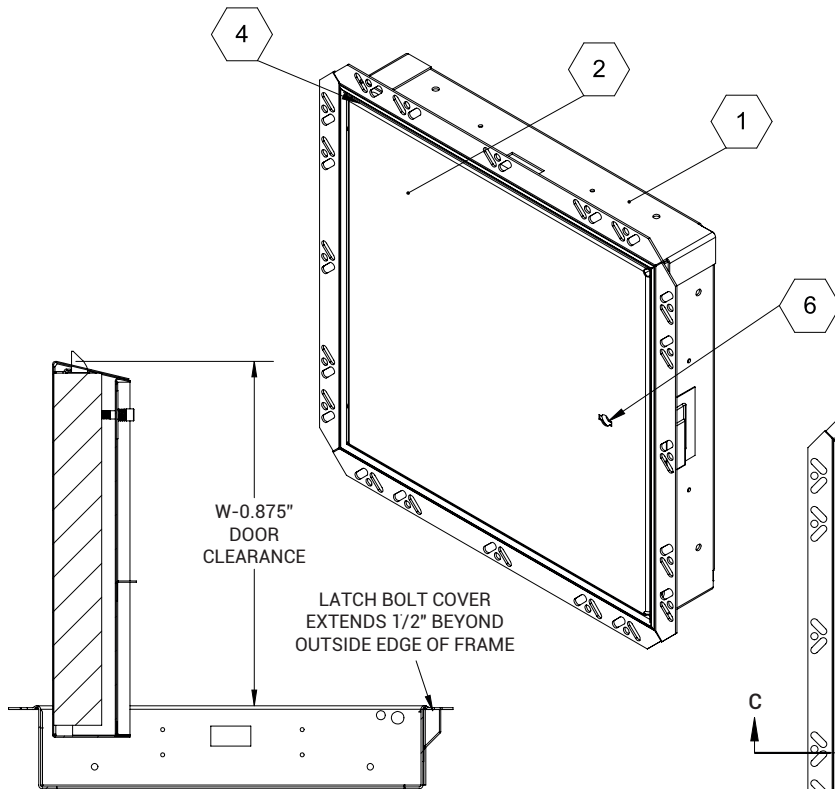


WEBSITE:  
[www.AccessDoorsAndPanels.com](http://www.AccessDoorsAndPanels.com)  
E-MAIL:  
[info@AccessDoorsAndPanels.com](mailto:info@AccessDoorsAndPanels.com)



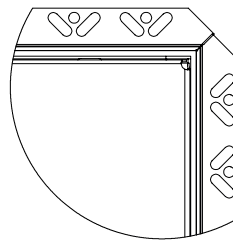
**BIW**

# INSULATED FIRE-RATED ACCESS DOOR



SECTION C-C

**HORIZONTAL**  
1 HR WOOD-FRAME CONSTRUCTION  
3 HR NON-COMBUSTABLE CONSTRUCTION  
ON SIZES UP TO AND INCLUDING 24" W X 36" H.



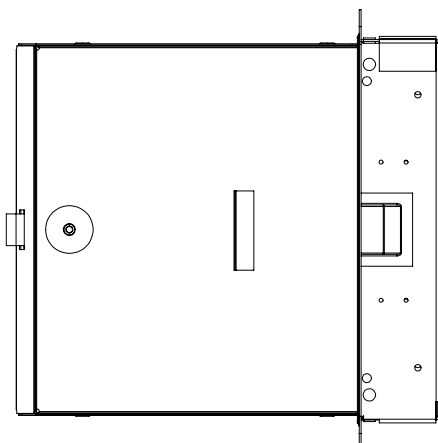
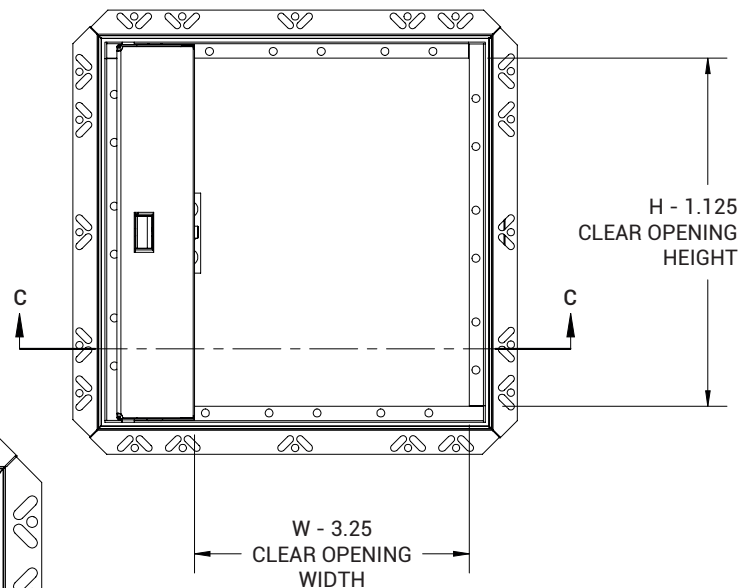
**DETAIL D**  
DRYWALL BEAD DETAIL  
SCALE 1 : 4

**NOTES:**

- ① FRAME:
- ② DOOR: Cold Rolled Steel, 20 GA
- ③ FINISH: White Powder Coat
- ④ HINGE:
- ⑤ SECONDARY LATCH: Varies
- ⑥ LOCK: Knurled Knob/Keyed Slam Latch
- ⑦ INSULATION: 2" Thick Fire Rated Mineral Wool, 8 R-Value

**OPTIONS:**

Gasket Installed (G)  
Masonry Anchors (M)



**VERTICAL**  
1-1/2 HOUR "B" LABEL



SPRING  
MOUNT  
BRACKET

INTERIOR  
RELEASE  
MECHANISM

