

# SUBMITTAL/TECHNICAL DATA SHEET



## DESCRIPTION

Concealed Hinged Access Door is designed for both ceiling and wall applications, the GFR panel can be used anywhere a locked door is required but style is still of utmost importance. The seamless design of these access doors blend into the surrounding drywall for a clean, upscale appearance.

## FEATURES

- Eco Friendly
- Screwdriver Cam Latch or Keyed Cam Lock
- Radius Corner or Square Corner

## SPECIFICATIONS

MODEL: BGFRR/BGFRS

DOOR: Gypsum Fiber Reinforced

FRAME: Gypsum Fiber Reinforced

SIZE:  
Min: 6 inches by 6 inches  
Max: 30 inches by 30 inches

INSTALLATION: Walls or Ceilings

FLANGE: Drywall Bead

HINGE: European

FINISH: Unfinished Gypsum, Natural Gypsum White

WARRANTY: 1 year

For a complete list of options visit [www.AccessDoorsAndPanels.com](http://www.AccessDoorsAndPanels.com)

SKU: **BGFRS-H**

## CONCEALED HINGED ACCESS DOOR



## DIMENSIONS AND APPEARANCE

>> CLICK TO VIEW ADDITIONAL DETAILS AND PRICING <<

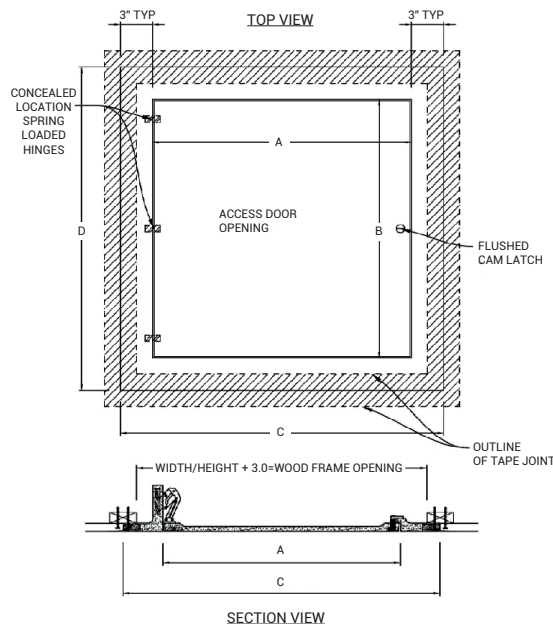
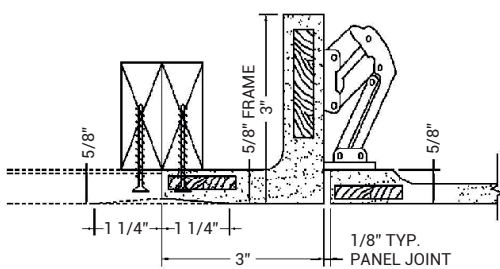
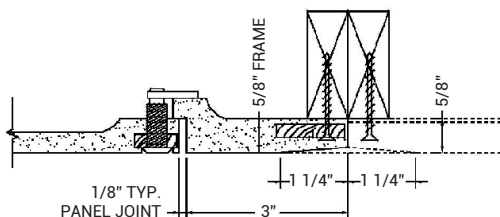
### ORDER GUIDE:

BASE	DOOR SHAPE	LATCH	WIDTH	X	LENGTH
BGFR					
	R - Radius Corner	C - Screwdriver Cam Latch	STANDARD SIZES (W XL)		
	S - Square Corner	L - Keyed Cam Lock	8" X 8"	18" X 18"	
			10" X 10"	22" X 30"	
			12" X 12"	24" X 24"	
			16" X 16"	30" X 30"	

Rough opening is door size + 6 inches.

Additional sizes available, call for more information.

For Detailed Specifications See Submittal Sheet



## PROJECT DATA

Custom Sizes Available - Fast!

Scan or Click



To view Pricing and Additional Product Info.

PROJECT NAME :	QTY	W	H	OPTIONS
ARCHITECT :				
DEALER :				
CONTRACTOR :				
LOCATION :	SPECIAL INSTRUCTIONS :			
DATE :	SUBMITTAL APPROVAL : (signature or stamp)			
TAGGING INSTRUCTIONS :				

TELEPHONE:  
1-888-457-1275  
FAX:  
1-888-626-2907



PO BOX 66738 #76520,  
SAINT LOUIS, MO  
63166-6738  
USA

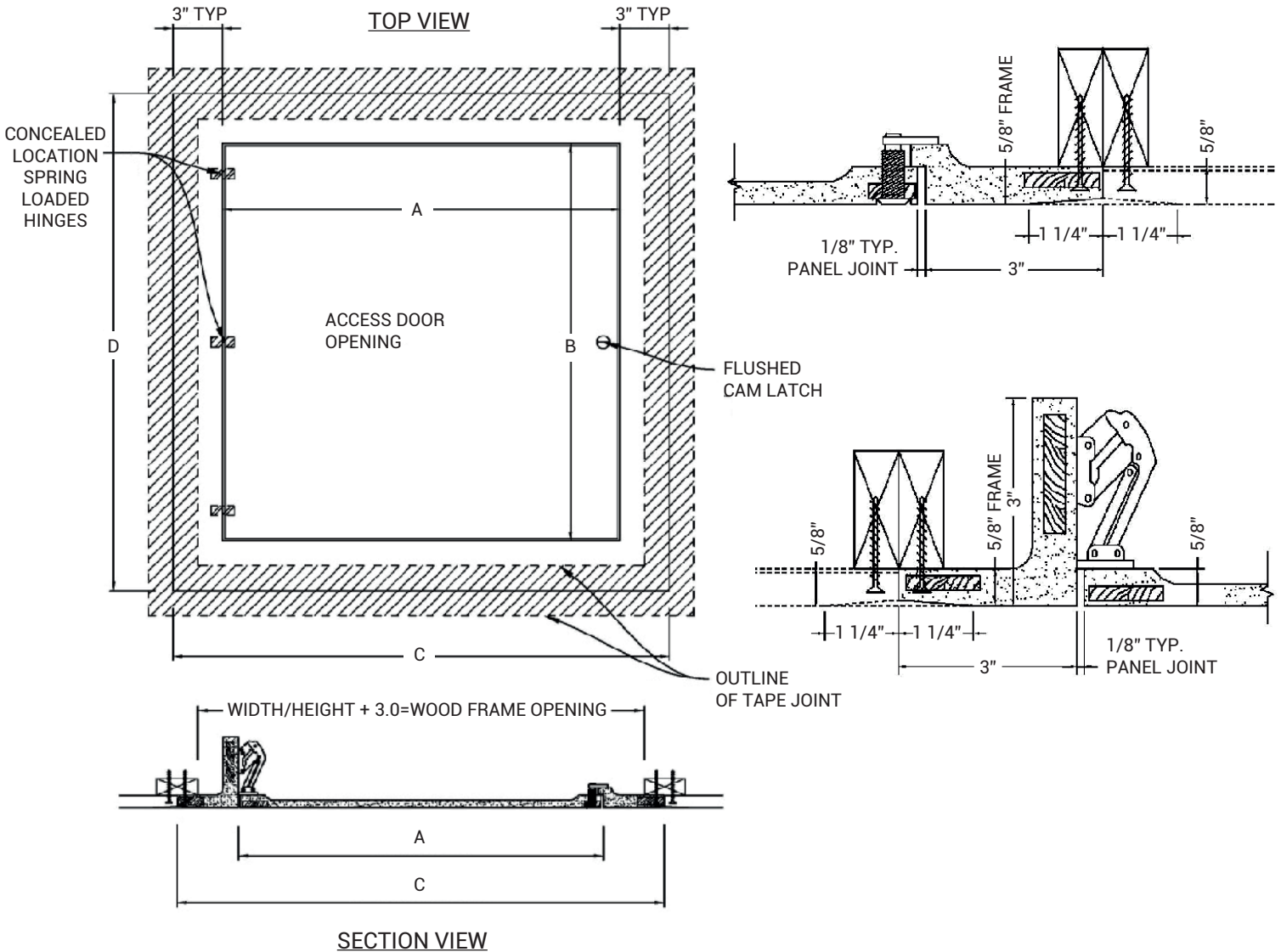


WEBSITE:  
[www.AccessDoorsAndPanels.com](http://www.AccessDoorsAndPanels.com)  
E-MAIL:  
[info@AccessDoorsAndPanels.com](mailto:info@AccessDoorsAndPanels.com)



# BGFRS-H

# CONCEALED HINGED ACCESS DOOR



**MATERIALS/TECHNICAL DATA:**

- High Density Gypsum Cement Plaster, Natural White
- Post-Consumer Recycled Glass (70% by volume)
- Multi-layered Fiberglass Mat
- Plywood Embedment
- Flush Cam Latch
- Concealed Spring Hinge, (3)

**OPTIONS:**

- - 1/2" X 1/8" Neoprene Gasket

QTY	PART #	DIM A (DOOR WIDTH)	DIM B (DOOR HEIGHT)	DIM C (DRYWALL OPENING WIDTH)	DIM D (DRYWALL OPENING HEIGHT)
	GFRSC-0909	9.0"	9.0"	15.0"	15.0"
	GFRSC-1212	12.0"	12.0"	18.0"	18.0"
	GFRSC-1616	16.0"	16.0"	22.0"	22.0"
	GFRSC-1818	18.0"	18.0"	24.0"	24.0"