

SUBMITTAL/TECHNICAL DATA SHEET



DESCRIPTION

The non-drainable pedestrian floor door is designed for standard-duty load and provides a flush installation for new concrete applications. Ideal use for utility and general building applications where water infiltration is not a concern.

FEATURES

- Pedestrian Load.
- Diamond Tread Plate.
- C-Channel Frame

SPECIFICATIONS

LOAD: 300psf live load

DOOR: Single or Double Leaf

MATERIAL: Aluminum: 1/4 inch, mill finish, gray primer on exterior frame (for cast-in only)

COVER: Diamond tread plate.

FRAME: C-Channel.

INSTALLATION: Cast-In or Bolt-In (optional).

SPRING: Enclosed coil, Type 17-7 Stainless Steel.

HINGE: Heavy-duty Type 316 Stainless Steel.

HOLD OPEN ARM: Type 316 Stainless Steel, automatic, locks cover in open position.

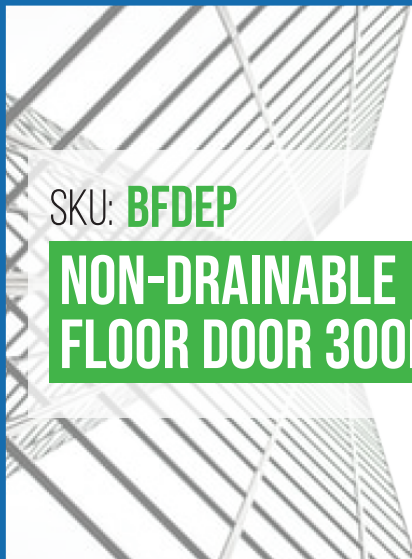
LATCH: Slam latch, Type 316 Stainless Steel, with inside lever handle, includes removable threaded plug and key.

GASKET: EPDM gasket

OPTIONS: Padlock Hasps, Locks, Finishes, Gasket, Safety Grates, Safety Nets, Safety Rails, Skirting.

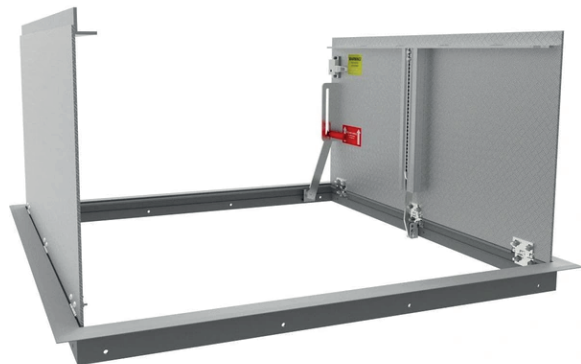
WARRANTY: 5 year

For a complete list of options visit www.AccessDoorsAndPanels.com



SKU: **BFDEP**

**NON-DRAINABLE
FLOOR DOOR 300PSF**



DIMENSIONS AND APPEARANCE

>> CLICK TO VIEW ADDITIONAL DETAILS AND PRICING <<

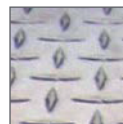
FIRE RATED DIAMOND TREAD FLOOR DOOR:

| MODEL | WIDTH | X | LENGTH | INSTALLATION | COVER | FL |
|--------|---|---|--|------------------------------------|--|----|
| BFDNPA | | | | | | |
| | SINGLE LEAF 24" X 24" 30" X 36" 36" X 36" 42" X 42" | | DOUBLE LEAF 48" X 48" 48" X 72" 60" X 60" | CAST-IN (STANDARD) BI - BOLT-IN | S - SINGLE LEAF D - DOUBLE LEAF E - DOUBLE SIDE BY SIDE T - TRIPLE SIDE BY SIDE | |

Additional sizes and options available, call for more information.

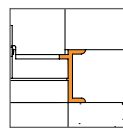


MATERIALS:

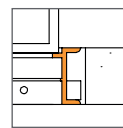


Aluminum

FRAME:



Angle Frame
Cast-in



Angle Frame
Bolt-in

PROJECT DATA

Custom Sizes Available - Fast!

| PROJECT NAME : | QTY | W | H | OPTIONS |
|------------------------|--|---|---|---------|
| ARCHITECT : | | | | |
| DEALER : | | | | |
| CONTRACTOR : | | | | |
| LOCATION : | SPECIAL INSTRUCTIONS : | | | |
| DATE : | | | | |
| TAGGING INSTRUCTIONS : | SUBMITTAL APPROVAL : (signature or stamp) | | | |

Scan or Click



To view Pricing and Additional Product Info.

TELEPHONE:
1-888-457-1275
FAX:
1-888-626-2907



PO BOX 66738 #76520,
SAINT LOUIS, MO
63166-6738
USA



WEBSITE:
www.AccessDoorsAndPanels.com
E-MAIL:
info@AccessDoorsAndPanels.com