

## DESCRIPTION

Fire-rated architectural pan door is the industry's leading solution for seamless sight lines, long-lasting quality and fire rated safety.

## FEATURES

- 2- or 3-hour fire-ratings tested to NFPA 288 (1/8" has 2- or 3-hour rating, 1" has 2-hour only)
- 1/8-Inch or 1-Inch pan sizes to receive a variety of flooring materials
- 1/8" pan in sizes up to 52" x 96"
- Lock options for added security
- Improved interior release handles
- Installs in wood or concrete applications

## SPECIFICATIONS

### SIZES 1/8" PAN:

- 250 psf 24"-48" W x 24"-60" L
- 150 psf >48"-52" W x >60"-96" L

### SIZES 1" PAN:

- 250 psf 24"-48" W x 24"-48" L

DOOR: Single

### COVER MATERIAL:

Aluminum: 1/4 inch smooth plate with 1/8-inch or 1-inch pan, Mill finish.

FRAME MATERIAL: Aluminum.

FIRE-RATING: 1/8" has 2- or 3-hour fire rating, 1" has 2-hour rating.

FRAME: Extruded Aluminum Angle.

INSTALLATION: Cast-In Standard or Bolt-In Optional.

SPRINGS: Enclosed coil, Type 17-7 Stainless Steel.

HINGE: Heavy-duty Type 316 Stainless Steel.

LATCH: Slam latch zinc-plated steel with inside lever handle.

CERTIFICATION: NFPA 288, Warnock Hersey label tested and listed by Intertek.

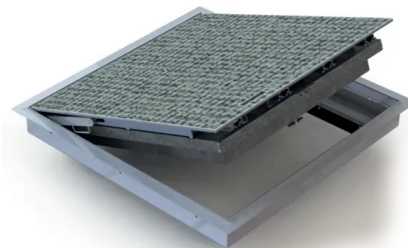
OPTIONS: Self-closing mechanism, recess padlock hasp, mortise prep.

WARRANTY: 5 year

For a complete list of options visit  
[www.AccessDoorsAndPanels.com](http://www.AccessDoorsAndPanels.com)

SKU: **BFDF-T1**

## FIRE-RATED ARCHITECTURAL 1/8" AND 1" PAN FLOOR DOOR



## DIMENSIONS AND APPEARANCE

>> CLICK TO VIEW ADDITIONAL DETAILS AND PRICING <<

**FIRE RATED ARCHITECTURAL 1/8-INCH PAN FLOOR DOOR:**  
BFDF IS STANDARD WITH 2-HOUR RATING UNLESS 3-HOUR RATING IS CHOSEN UNDER "OPTIONS"

MODEL	WIDTH	X	LENGTH	LOAD	COVER & INSTALL	MATERIAL	OPTIONS
BFDF							
	24" – 48" (250 PSF) <sup>1</sup> >48" – 52" (150 PSF) <sup>2</sup>		24" – 60" (250 PSF) 60" – 96" (150 PSF)	<b>P</b> - 250 PSF <b>L</b> - 150 PSF	<b>S</b> - SINGLE DOOR <b>W</b> - ANCHORS PROVIDED <b>L</b> - HANDLE	<b>A</b> - ALUMINUM	<b>T1</b> - 1/8-INCH TILE DOOR <b>3HR</b> - 3 HOUR RATING <sup>3</sup> <b>BI</b> - BOLT-IN INSTALLATION <sup>4</sup> <b>SC</b> - SELF CLOSING MECHANISM

<sup>1</sup> The load will default to "P" (250 psf) for doors up to and including 48" x 60" (e.g. FDFPA36x36SWL).

<sup>2</sup> The load will default to "L" (150 psf) for doors greater than 48" x 60" (e.g. FDFLA50x75SWL).

<sup>3</sup> Up to 48" x 60" only and 250 psf only.

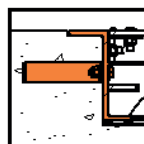
<sup>4</sup> 2-hour only.

**FIRE RATED ARCHITECTURAL 1-INCH PAN FLOOR DOOR:**

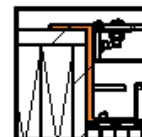
MODEL	WIDTH	X	LENGTH	MATERIAL	LOAD	COVER & INSTALL	OPTIONS
BFDF							
	24" – 48"		24" – 48"	<b>A</b> - ALUMINUM	<b>P</b> - 250 PSF	<b>S</b> - SINGLE DOOR <b>W</b> - ANCHORS PROVIDED <b>L</b> - HANDLE	<b>P1</b> - 1-INCH PAN DOOR <b>BI</b> - BOLT-IN INSTALLATION <b>SC</b> - SELF CLOSING MECHANISM



FRAME:



Angle Frame  
Cast-In



Angle Frame  
Both-In

## PROJECT DATA

Custom Sizes Available - Fast!

Scan  or  Click



To view Pricing and  
Additional Product Info.

PROJECT NAME :	QTY	W	H	OPTIONS
ARCHITECT :				
DEALER :				
CONTRACTOR :				
LOCATION :	SPECIAL INSTRUCTIONS :			
DATE :				
TAGGING INSTRUCTIONS :	SUBMITTAL APPROVAL : (signature or stamp)			



TELEPHONE:  
1-888-457-1275  
FAX:  
1-888-626-2907



PO BOX 66738 #76520,  
SAINT LOUIS, MO  
63166-6738  
USA



WEBSITE:  
[www.AccessDoorsAndPanels.com](http://www.AccessDoorsAndPanels.com)  
E-MAIL:  
[info@AccessDoorsAndPanels.com](mailto:info@AccessDoorsAndPanels.com)