

SUBMITTAL/TECHNICAL DATA SHEET



DESCRIPTION

The Existing Opening Floor Door is designed for retrofit applications and is constructed with an angle frame. While providing a quality, economical option this is ideal for areas where water or moisture intrusion is not a concern.

FEATURES

- Pedestrian Load.
- Diamond Tread Plate.
- Material Options.
- Angle Frame.
- Drop-In Installation.

SPECIFICATIONS

LOAD: 300PSF

DOOR: Single or Double Leaf

MATERIAL:
 Aluminum: 1/4 inch, mill finish, gray primer on exterior frame (for cast-in only).
 Steel: 3/16 inch, mill finish.
 Stainless Steel: 3/16 inch, Type 304 or Type 316, bead blasted.

COVER: Diamond tread plate.

FRAME: Angle.

INSTALLATION: Bolt-In.

SPRINGS: Enclosed coil, Type 17-7 Stainless Steel.

HINGE: Heavy-duty Type 316 Stainless Steel.

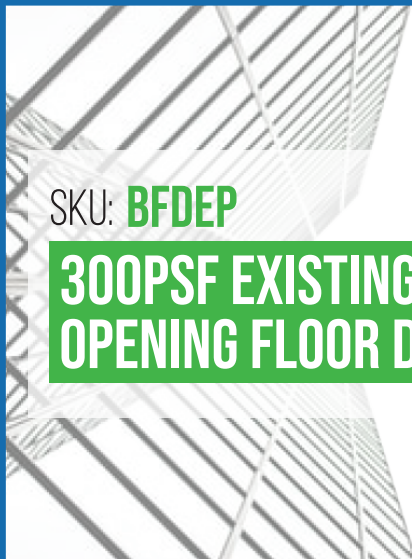
HOLD OPEN ARM: Type 316 Stainless Steel, automatic hold open arm locks cover in open position.

LATCH: Slam latch, Type 316 stainless steel, inside lever handle and key.

OPTIONS: Padlock Hasps, Locks, Finishes, Gasket, Safety Grates, Safety Nets, Safety Rails, Skirting.

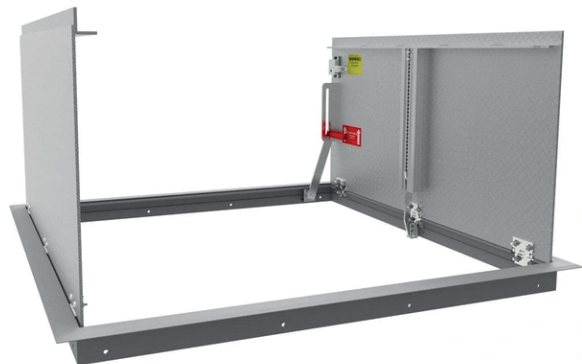
WARRANTY: 5 year

For a complete list of options visit www.AccessDoorsAndPanels.com



SKU: **BFDEP**

**300PSF EXISTING
OPENING FLOOR DOOR**



DIMENSIONS AND APPEARANCE

>> CLICK TO VIEW ADDITIONAL DETAILS AND PRICING <<

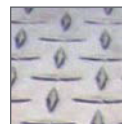
FIRE RATED DIAMOND TREAD FLOOR DOOR:

MODEL	WIDTH	X	LENGTH	LOAD	MATERIAL	COVER	DL
BFDEP							
	SINGLE LEAF		DOUBLE LEAF	H - H20	A - 1/4 INCH ALUMINUM	S - SINGLE LEAF	
	24" X 24"		48" X 48"	S - HS20	P - 3/16 INCH STEEL	D - DOUBLE LEAF	
	30" X 36"		48" X 72"		S - 3/16 INCH TYPE		
	36" X 36"		60" X 60"		304 STAINLESS STEEL		
	42" X 42"				V - 3/16 INCH TYPE		
					316 STAINLESS STEEL		

Additional sizes and options available, call for more information.



MATERIALS:



Aluminum

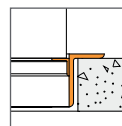


Primed Steel

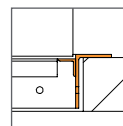


Stainless Steel

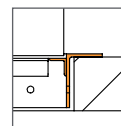
FRAME:



Angle Frame Bolt-in Aluminum





Angle Frame Bolt-in Steel



Angle Frame Bolt-in Stainless Steel

PROJECT DATA

Custom Sizes Available - Fast!

Scan  or  Click



To view Pricing and Additional Product Info.

PROJECT NAME :	QTY	W	H	OPTIONS
ARCHITECT :				
DEALER :				
CONTRACTOR :				
LOCATION :	SPECIAL INSTRUCTIONS :			
DATE :	SUBMITTAL APPROVAL : (signature or stamp)			
TAGGING INSTRUCTIONS :				

TELEPHONE:
1-888-457-1275
FAX:
1-888-626-2907



PO BOX 66738 #76520,
SAINT LOUIS, MO
63166-6738
USA



WEBSITE:
www.AccessDoorsAndPanels.com
E-MAIL:
info@AccessDoorsAndPanels.com