

SUBMITTAL/TECHNICAL DATA SHEET



DESCRIPTION

The H20 Drainable Floor Door is designed for infrequent, off street traffic in exterior or high moisture areas when liquid flow into the door is a concern. The frame is constructed with a gutter channel for water runoff into a drainage system.

FEATURES

- H20 Load or HS20.
- Diamond Tread Plate.
- Exterior Use.
- Drainable Frame with Gutter.
- Cast-In Installation.

SPECIFICATIONS

LOAD:

- BFDDH: H20
- BFDDS: HS20

DOOR: Single or Double Leaf

MATERIAL:

Aluminum: 1/4 inch, mill finish, gray primer on exterior frame (for cast-in only).

Steel: 3/16 inch, mill finish.

Stainless Steel: 3/16 inch, Type 304 or Type 316, bead blasted.

COVER: Diamond tread plate.

FIRE-RATING: 2-hour or 3-hour.

FRAME: Drainable gutter frame with integral 1 inch anchor flange, EDPM gasket and 1-1/2 inch drain coupling.

INSTALLATION: Cast-In.

SPRINGS: Enclosed coil, Type 17-7 Stainless Steel.

HINGE: Heavy-duty Type 316 Stainless Steel.

LATCH: Slam latch Type 316 Stainless Steel with inside lever handle, includes removable threaded plug and key

OPTIONS: Padlock Hasps, Locks, Finishes, Safety Grates, Safety Nets, Safety Rails, Skirting.

WARRANTY: 5 year

For a complete list of options visit www.AccessDoorsAndPanels.com



SKU: **BFDDH**

H20 DRAINABLE FLOOR DOOR

DIMENSIONS AND APPEARANCE

>> [CLICK TO VIEW ADDITIONAL DETAILS AND PRICING](#) <<

FIRE RATED DIAMOND TREAD FLOOR DOOR:

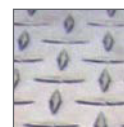
MODEL	WIDTH	X	LENGTH	LOAD	MATERIAL	COVER	INSTALL
BFDD							
	SINGLE LEAF 24" X 24" 30" X 36" 36" X 36" 42" X 42"		DOUBLE LEAF 48" X 48" 48" X 72" 60" X 60"	H - H20 S - HS20	A - 1/4 INCH ALUMINUM P - 3/16 INCH STEEL S - 3/16 INCH TYPE 304 STAINLESS STEEL V - 3/16 INCH TYPE 316 STAINLESS STEEL	S - SINGLE LEAF D - DOUBLE LEAF	FL - ALUMINUM WL - STEEL OR STAINLESS STEEL

Additional sizes and options available, call for more information.

HOLD OPEN ARM: Type 316 Stainless Steel automatic hold open arm locks cover in open position.

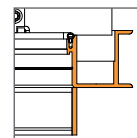


MATERIALS:



Aluminum

FRAME:



Gutter Frame Cast-In

PROJECT DATA

Custom Sizes Available - Fast!

PROJECT NAME :	QTY	W	H	OPTIONS
ARCHITECT :				
DEALER :				
CONTRACTOR :				
LOCATION :	SPECIAL INSTRUCTIONS :			
DATE :	SUBMITTAL APPROVAL : (signature or stamp)			
TAGGING INSTRUCTIONS :				

Scan or Click



To view Pricing and Additional Product Info.

TELEPHONE:
1-888-457-1275
FAX:
1-888-626-2907



PO BOX 66738 #76520,
SAINT LOUIS, MO
63166-6738
USA



WEBSITE:
www.AccessDoorsAndPanels.com
E-MAIL:
info@AccessDoorsAndPanels.com