



Quality Access Doors- FAST!

# SUBMITTAL/TECHNICAL DATA SHEET

[www.AccessDoorsAndPanels.com](http://www.AccessDoorsAndPanels.com)

## APPLICATION

In Metro systems everywhere, the EEH Emergency Egress Door provides passengers and crew with an auxiliary exit to the street level in emergency situations.

## FEATURES

- Channel frame construction with anchors welded around the frame for casting into concrete.
- Diamond plate door panel is reinforced for a live load of 300 pounds/sq ft. (pedestrian loading or light vehicular loading for off-street locations).

## SPECIFICATIONS

**MATERIAL:** Cover and frame shall be mill finish aluminum. All hardware shall be 316 stainless steel.

**DOOR:** 1/4" Diamond plate door panel is reinforced for a live load of 300 pounds/sq ft. (pedestrian loading or light vehicular loading for off-street locations) with flush steel lifting handles. Covers shall be equipped with 316 stainless steel hold open arms with red vinyl grip to hold cover in the 90 degrees open position.

**FRAME:** 3/8" aluminum channel that drains rainwater through a 1-1/2" pipe coupling.

**HINGE:** 316 stainless steel with tamper resistant fasteners.

**SPRINGS:** Stainless steel compression springs enclosed in telescoping tubes. Lower tube interlocks with spring support bracket welded to the door frame.

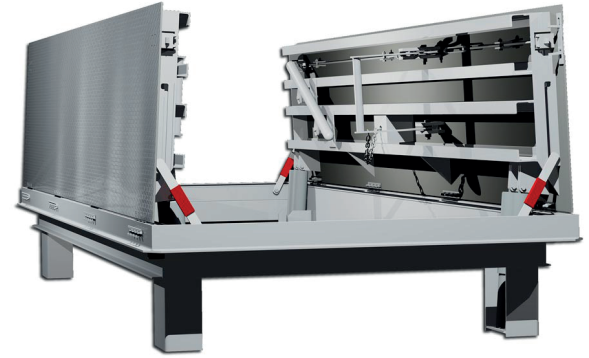
**LATCH:** Two-point 316 stainless steel with interior push bar and exterior plug for fire department spanner.

**HAND RAIL:** Aluminum tubing welded to each cover.

**SIGNAGE:** "Push Bar" and "Keep Clear" signs to be included.

SKU: **BA-EEFD**

# EMERGENCY EGRESS HATCH



## DIMENSIONS AND APPEARANCE

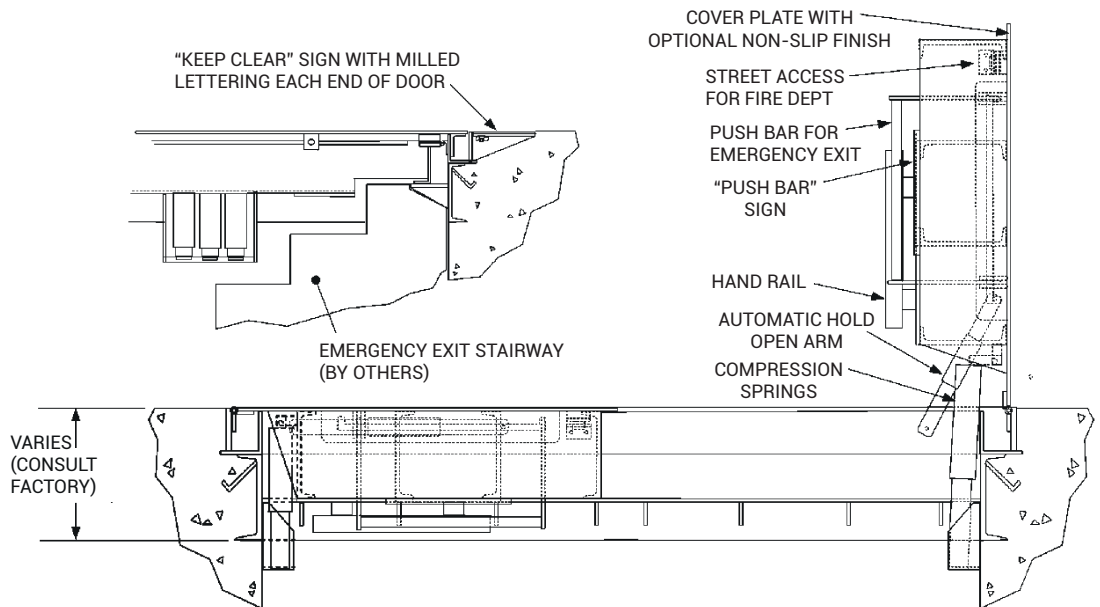
>> [CLICK TO VIEW ADDITIONAL DETAILS AND PRICING](#) <<

### SIZE & OPTIONS:

EEH Emergency Egress doors are custom-fabricated to suit transit system requirements.

Typically, these doors provide unobstructed openings in the range of 4' x 10'.

Please contact ACUDOR for more information on sizes, live load ratings, and optional features.



MANUFACTURED BY ACUDOR

For detailed informations see submittal sheet

For a complete list of options visit [www.AccessDoorsAndPanels.com](http://www.AccessDoorsAndPanels.com)

## PROJECT DATA

Custom Sizes Available - Fast!

Scan or Click



To view Pricing and Additional Product Info.

PROJECT NAME :	QTY	W	H	OPTIONS
ARCHITECT :				
DEALER :				
CONTRACTOR :				
LOCATION :	SPECIAL INSTRUCTIONS :			
DATE :	SUBMITTAL APPROVAL : (signature or stamp)			
TAGGING INSTRUCTIONS :				

TELEPHONE:  
1-888-457-1275  
FAX:  
1-888-626-2907



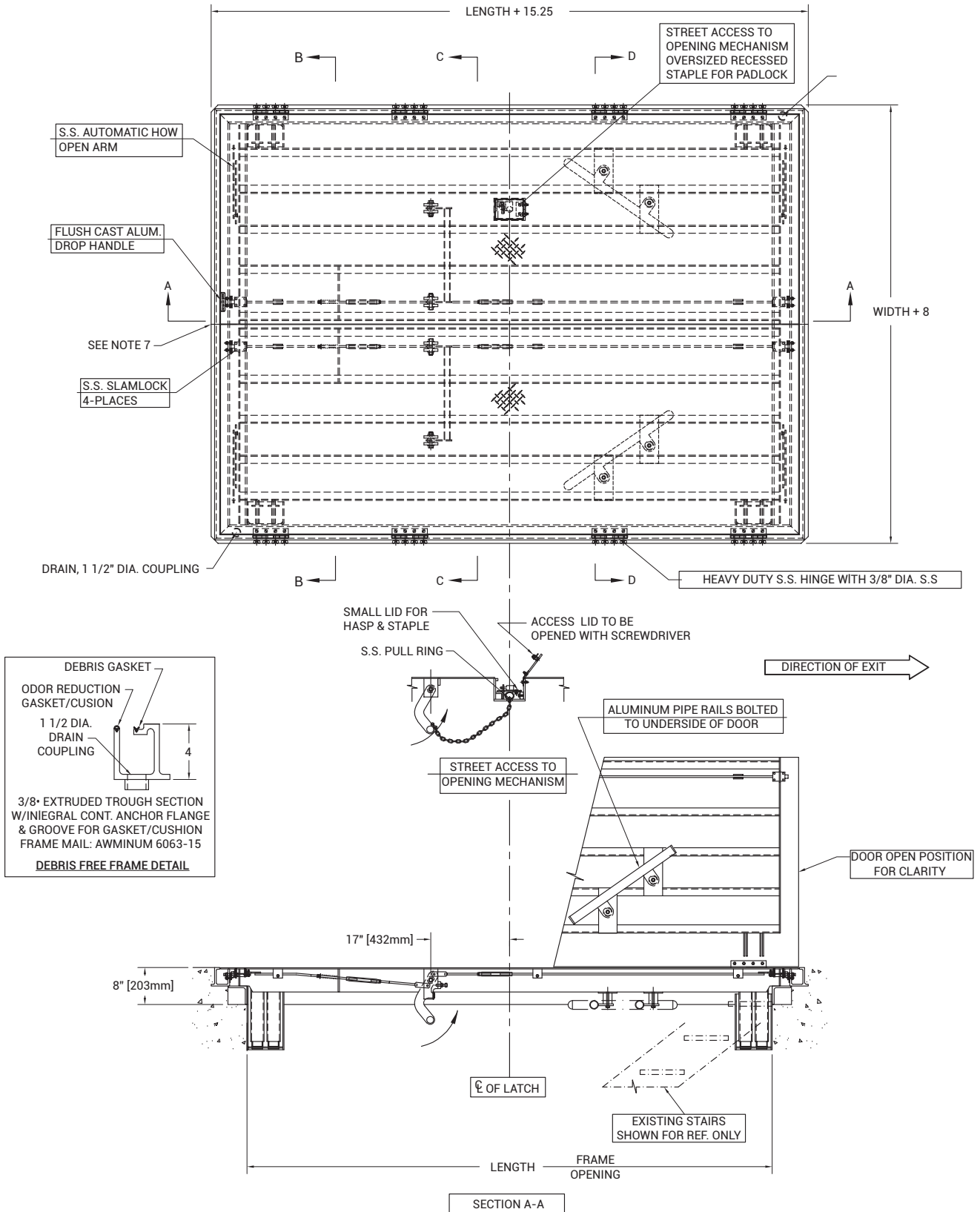
PO BOX 66738 #76520,  
SAINT LOUIS, MO  
63166-6738  
USA



WEBSITE:  
[www.AccessDoorsAndPanels.com](http://www.AccessDoorsAndPanels.com)  
E-MAIL:  
[info@AccessDoorsAndPanels.com](mailto:info@AccessDoorsAndPanels.com)

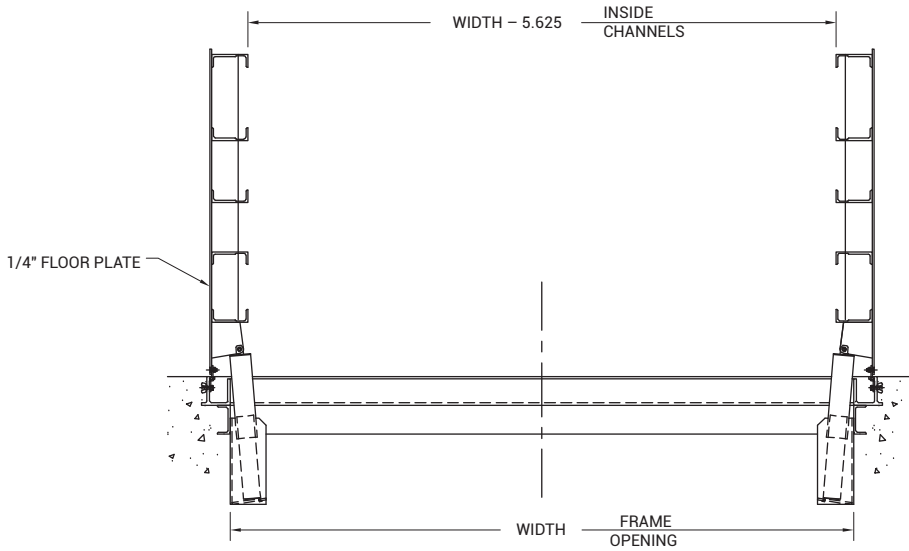
# BA-EEFD

# EMERGENCY EGRESS HATCH



# BA-EEFD

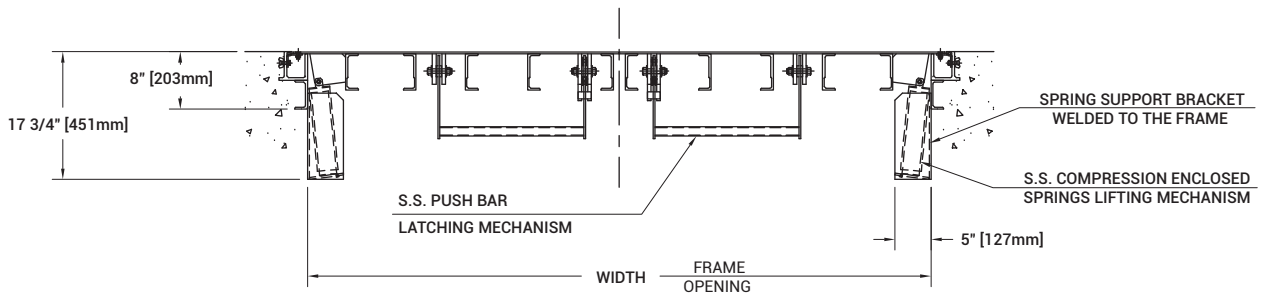
# EMERGENCY EGRESS HATCH



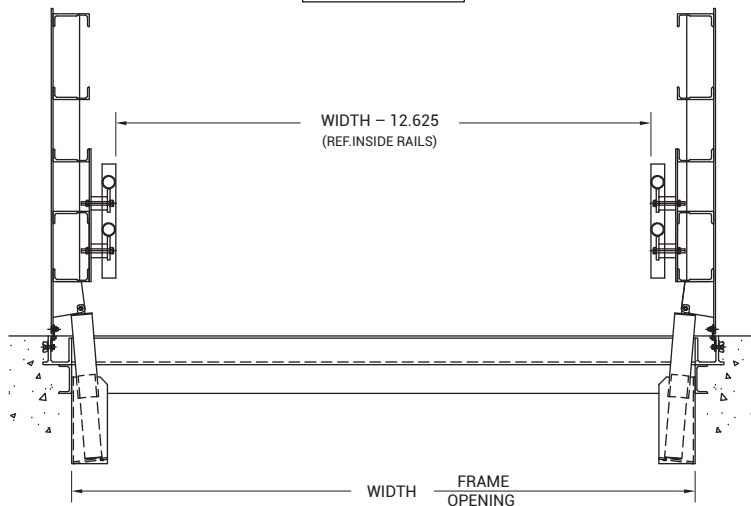
**SECTION B-B**  
(DOOR OPEN)

**NOTES:**

- 1 - MATERIAL: ALUMINUM
- 2 - LOADING, 300 LBS. PER SQ. FT.
- 3 - STAINLESS STEEL 316 HARDWARE
- 4 - COVERS NOT SUBJECTED TO VEHICULAR TRAFFIC LOADING (SIDEWALKS AND PARKWAYS, EXCLUDING DRIVEWAYS)
- 5 - ENCLOSED SPRING LIFTING MECHANISM FOR MAX. 30 LBS. OPENING FORCE
- 6 - AREA OF FRAME IN CONTACT WITH CONCRETE TO BE PAINTED WITH BITUMINOUS COATING
- 7 - FRAME SPLIT IN 2 SECTIONS FOR SHIPPING & BOLTED TOGETHER IN THE FIELD BY OTHERS



**SECTION C-C**  
(DOOR CLOSED)



**SECTION D-D**  
(DOOR OPEN)