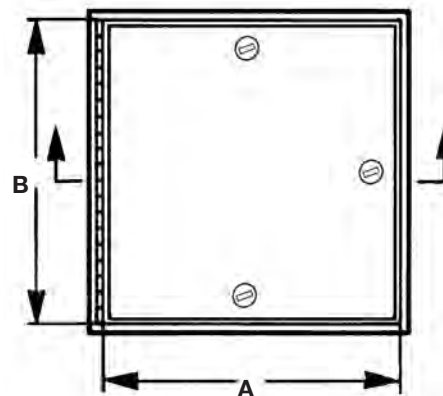


DETAIL & SUBMITTAL SHEET



FRONT
ELEVATION



SPECIFICATIONS:

Door: 16 ga. steel recessed 1-1/2"

Frame: 16 ga. steel, hat channel type shape

Hinge: Continuous piano hinge allowing 180°

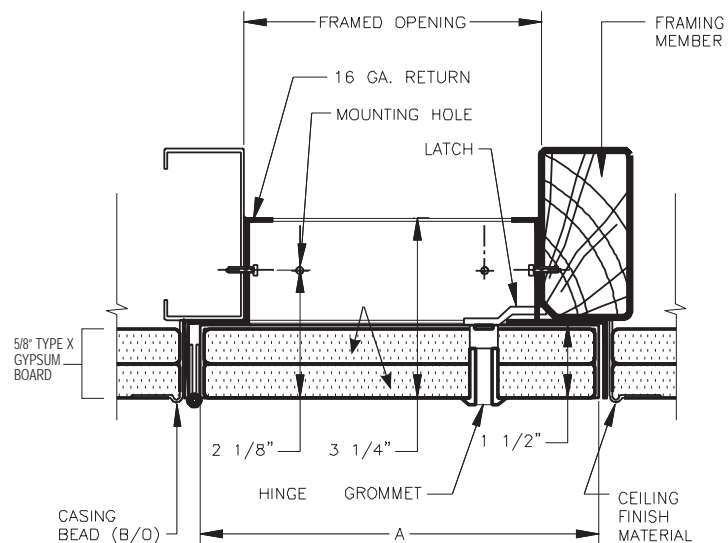
Latch: Flush stainless steel cam latch

Finish: White baked enamel coat

OPTIONS (at additional cost)

- ☐ Key operated long barrel cylinder lock
- ☐ 5/8" Type X Gypsum Board installed
- ☐ Hot Smoke Seal gasketing on all 4 sides* *
- ☐ Special sizes available
- ☐

✓	Item No.	Door Size W x H	Wall Opening	Cam Latch	Ship Wt. Lbs.
	ATR 610	12 x 12	10 3/4 x 10 3/4	1	8
	ATR 610	18 x 18	16 3/4 x 16 3/4	1	13
	ATR 610	24 x 24	22 3/4 x 22 3/4	3	23



To provide access in a suspended drywall ceiling application that forms part of a fire resistive floor-ceiling assembly. The offset design of the return frame along with a recessed panel with 2 layers of 5/8" Type X Fire-Rated Gypsum board keeps the continuity of the fire resistive quality.

Click here to Online Product Page and Pricing

AccessDoorsAndPanels

Phone: 1-800-609-2917

Fax: 1-888-626-2907

Email: info@accessdoorsandpanels.com

Website: www.AccessDoorsAndPanels.com

PO Box 66738 #76520, Saint Louis, MO 63166 6738



www.AcceessDoorsAndPanels.com