



High-quality, architecturally pleasing, innovative access doors for walls, ceilings, ducts, floors and roofs



VALVE BOXES - Recessed ARVB

Application

- Provides easy access to all types of valves and controls that need to be concealed in the wall, but protected by a fully enclosed box

Product Features

- The depth of the valve box can be modified to meet all the valve and control requirements
- When required, vision panels, louvers, engraved plates can be supplied, along with special holes for pipes or conduits

ARVB Valve Box Specifications:

Box Material: Stainless Steel or Steel: 16 gauge door, frame, box

Box Door: Flush to frame — rounded safety corners

Box Frame: One piece outer flange welded to box

Box: Fully enclosed, completely attached to frame. When required, box can be made with open back.

Box Hinge: Continuous, concealed

Box Latch: Cylinder lock & key, Also available: screwdriver operated cam latch, spanner head cam latch, flush paddle handle, thumb turn latch.

Box Finish: Stainless Steel: #4 satin polish. Steel: 5 stage iron phosphate preparation with prime coat of White alkyd baked-on enamel

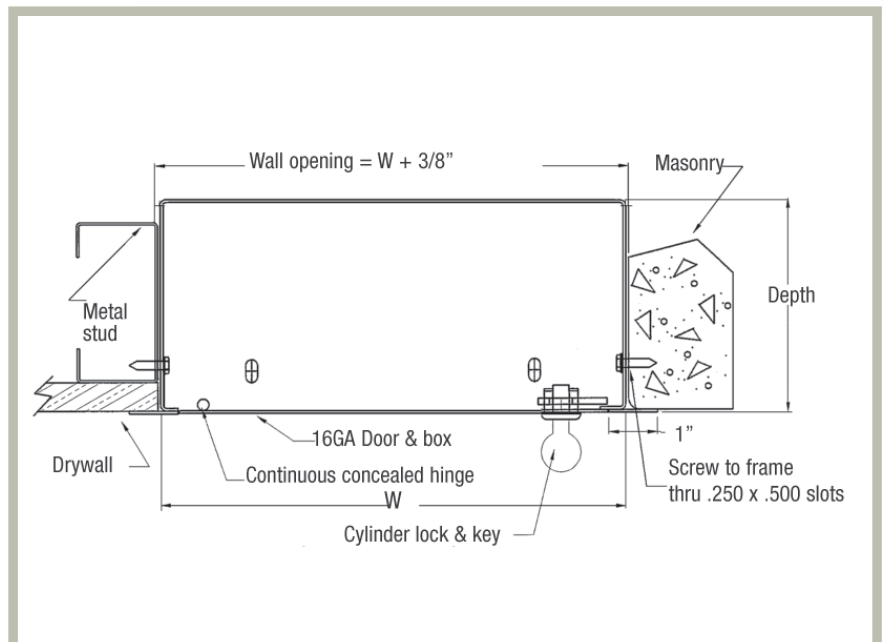


STANDARD SIZES (Special sizes available upon request)

NOMINAL DOOR SIZE W X H		WEIGHT PER DOOR		
inches	mm	Latches	lbs.	kg.
8 X 8 X 4	203 X 203 X 101	1	5	2.3
8 X 8 X 6	203 X 203 X 152	1	7	3.2
8 X 8 X 8	203 X 203 X 203	1	9	4.1
12 X 12 X 4	305 X 305 X 101	1	9	4.1
12 X 12 X 6	305 X 305 X 152	1	12	5.5
12 X 12 X 8	305 X 305 X 203	1	14	6.4

Wall opening is $W + 3/8"$ (9 mm)

For detailed specifications see submittal sheet



Click here to Online Product Page and Pricing

For more information, contact AccessDoorsAndPanels www.AccessDoorsAndPanels.com

Phone: 1-800-609-2917

Fax: 1-888-626-2907

Email: info@accessdoorsandpanels.com