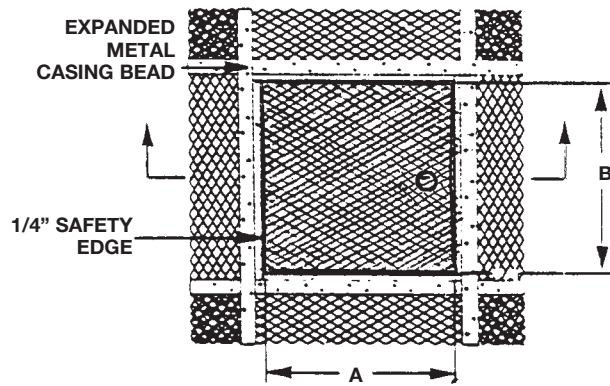


DETAIL & SUBMITTAL SHEET

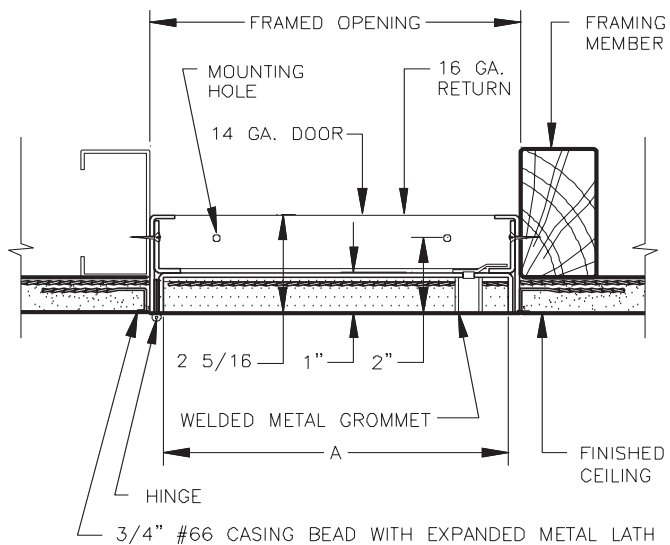
WALLS & CEILINGS



FRONT ELEVATION



SECTION DETAIL



SPECIFICATIONS:

Door: 14 ga. steel. Door is recessed 1" and lined with expanded metal lath

Frame: 16 ga. steel with 24 ga. galvanized casing bead and expanded metal lath surrounding door

Hinge: Continuous stainless steel hinge opens 180°

Latches: Flush, stainless steel cam latch

Finish: White baked enamel coat

OPTIONS (at additional cost)

- Key-operated medium barrel cylinder lock
- Weather resistive neoprene gasketing all 4 sides
(Closed cell sponge, blend of Neoprene/EPDM/SBR. Meets ASTM D-1056: SCE 41, RE 41, 2A1; substrate UL 94HF-1 recognized.)
- Special sizes available
- _____

✓	Item No.	Door Size W x H	Wall Opening	Cam Latch	Ship Wt. Lbs.
	AP 510	12 x 12	12 1/4 x 12 1/4	3	10
	AP 510	12 x 24	12 1/4 x 24 1/4	3	10
	AP 510	18 x 18	18 1/4 x 18 1/4	3	15
	AP 510	24 x 24	24 1/4 x 24 1/4	3	28

A precision door that provides a virtually concealed installation, keeping acoustical surfaces intact while contributing to sound control and better appearance. Door panels are recessed to receive plaster up to 1" thick. Plaster covering the door finishes flush with the surrounding field, leaving only the narrow frame edges exposed.

[Click here to Online Product Page and Pricing](#)

AccessDoorsAndPanels

Phone: 1-800-609-2917 **Email:** info@accessdoorsandpanels.com
Fax: 1-888-626-2907 **Website:** www.AccessDoorsAndPanels.com
 PO Box 66738 #76520, Saint Louis, MO 63166 6738



www.AccessDoorsAndPanels.com