



High-quality, architecturally pleasing, innovative access doors for walls, ceilings, ducts, floors and roofs



# Floor Door, Floodtight A-FPS

## Application

- Designed for interior and exterior floodtight applications where water may rise above the surface opening.

## Product Features

- Angle frame construction with 4" high horizontal leg to allow for bolting to concrete.
- Diamond plate door panel is reinforced for a live load of 625 pounds/sqft. (capable of holding up to 10 ft. head of water).
- Door panel overlaps frame, compressing the gasket providing a floodtight fit.
- U shaped neoprene gasket and stainless steel pressure lock system ensure the door will not leak.



## A-FPS Floor Door Specifications:

**Material:** Aluminum door & frame ; Type 316 Stainless steel hinges & hardware

**Door:** 1/4" aluminum diamond plate reinforced for live load of 625 pounds/per sq. ft. (capable of holding up to 10 ft. head of water)

**Frame:** 3/8" aluminum with 4" high raised frame for bolting to concrete

**Hinge:** Type 316 stainless steel butt hinges with tamper proof stainless steel bolts and nuts.

**Gasket:** 3/8" neoprene gasket

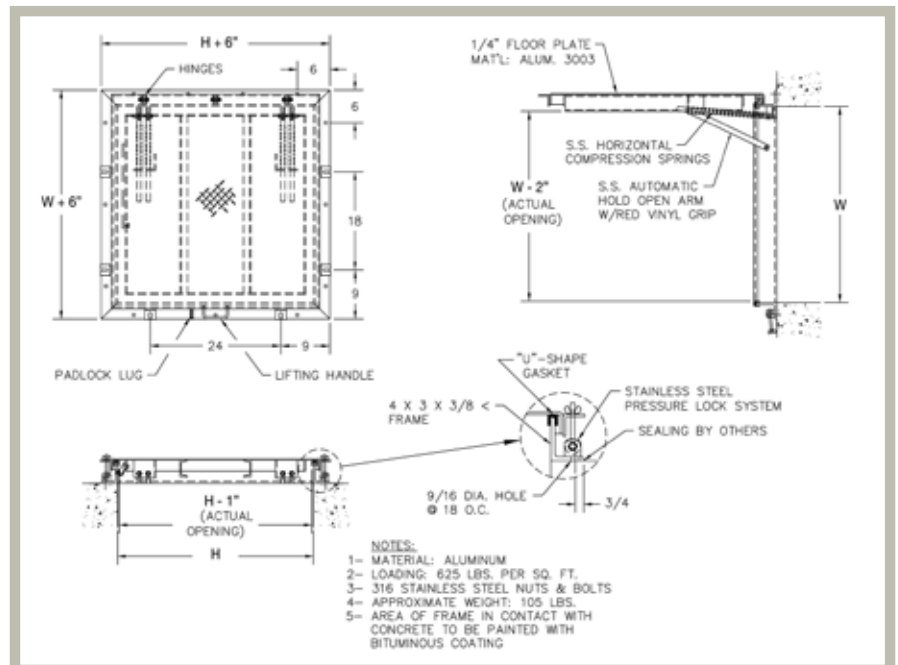
**Opening Device:** Automatic hold open arm with red vinyl grip allows door to open to 90 degrees, locking door in open position and allowing for easy control when closing door panel. Stainless steel compression springs provide lift assistance.

**Standard Latch:** Type 316 stainless steel pressure lock system and exterior staple for padlock

**Finish:** Mill finish with bituminous coating on exterior frame

## AVAILABLE SIZES (Special sizes available upon request)

FRAME I.D. SIZE W X H		WEIGHT PER DOOR	
inches	mm	lbs.	kg.
24 x 24	610 x 610	85	38.6
30 x 30	762 x 762	105	47.7
30 x 48	762 x 1220	130	59.1
36 x 36	914 x 914	125	56.8
36 x 48	914 x 1220	140	63.6



[Click here to Online Product Page and Pricing](#)

For more information, contact [AccessDoorsAndPanels](http://AccessDoorsAndPanels.com) [www.AccessDoorsAndPanels.com](http://www.AccessDoorsAndPanels.com)

Phone: 1-800-609-2917

Fax: 1-888-626-2907

Email: [info@accessdoorsandpanels.com](mailto:info@accessdoorsandpanels.com)