

ACCESS DOORS

HF Series



MEMBER OF
MORRIS GROUP
INTERNATIONAL*

Hidden Flange Access Doors

Hidden Flange Access Doors are ideally suited for new installations or for remodeling in masonry, tile, wood or other wall and ceiling surfaces. The design avoids the additional labor to mud or plaster the flange due to it being hidden behind the door. The beveled edges and concealed door frame provide an appearance that allows the unit to blend into the wall better than other doors where the door frame is readily apparent.

Door and Frame are fabricated from 16 gage, galvanized steel with a prime coat finish.

Hinge is fully concealed and mounted on the long side of the rectangular door panel.

Latch is screwdriver operated cam latch.

Guide Specification

Provide Elmdor® HF Series, Hidden Flange Access Doors (Specify model number and options). Access door and frame shall be fabricated from 16 gage galvanized steel with a prime coat finish. Doors to have concealed pantograph hinges. Latch shall be screwdriver operated cam latch.



Member of U.S. Green
Building Council

HF

Revised: 10/25/16



MODEL NUMBER AND OPTIONS SELECTION

BASE MODEL NUMBER

HF Hidden Flange Access Door

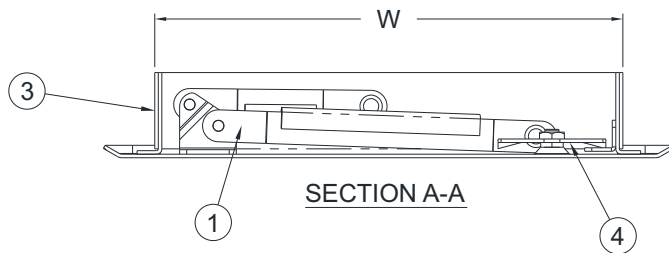
Suffix Options

- AKL Allen Key Latch
- CL Cylinder Lock (one per door)
- CLD Cylinder Lock with Dust Shutter (one per door)

STANDARD AVAILABLE SIZES

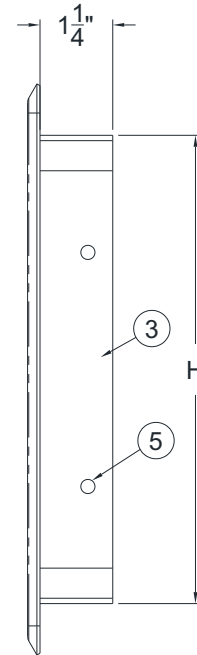
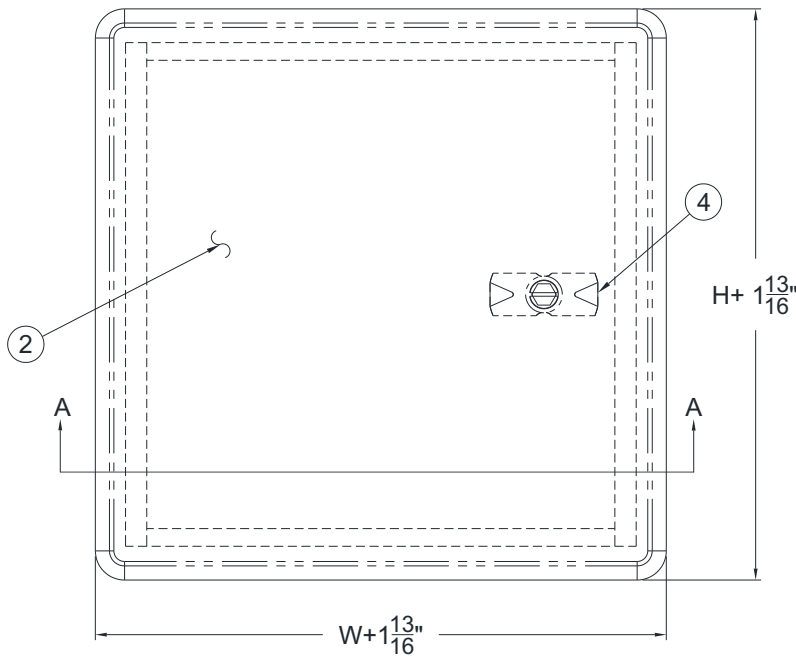
Special sizes available upon request.

FRAME SIZE (W x H) INCHES (mm)	WALL OPENING INCHES (mm)	LATCHES	WEIGHT lbs (kg)
HF 8-1/4" x 8-1/4" (210 x 210)	8-1/2" x 8-1/2" (216 x 216)	1	3 (1.36)
HF 12" x 12" (305 x 305)	12-1/4" x 12-1/4" (312 x 312)	1	6 (2.72)
HF 16" x 16" (406 x 406)	16-1/4" x 16-1/4" (413 x 413)	1	9 (4.08)
HF 18" x 18" (457 x 457)	18-1/4" x 18-1/4" (464 x 464)	3	10 (4.54)
HF 24" x 24" (610 x 610)	24-1/4" x 24-1/4" (616 x 616)	4	17 (7.71)



NOTES:

1. PANTOGRAPH HINGE
2. DOOR
3. FRAME
4. SCREWDRIVER OPERATED LATCH
5. MOUNTING HOLES



SELECTION SUMMARY & APPROVAL FOR MANUFACTURING	
Model Number & Options _____	Quantity _____
Company _____	Date _____
Contact _____	Title _____
Approval for Manufacturing/Signature _____	

HF

Revised: 10/25/16