

# Drywall

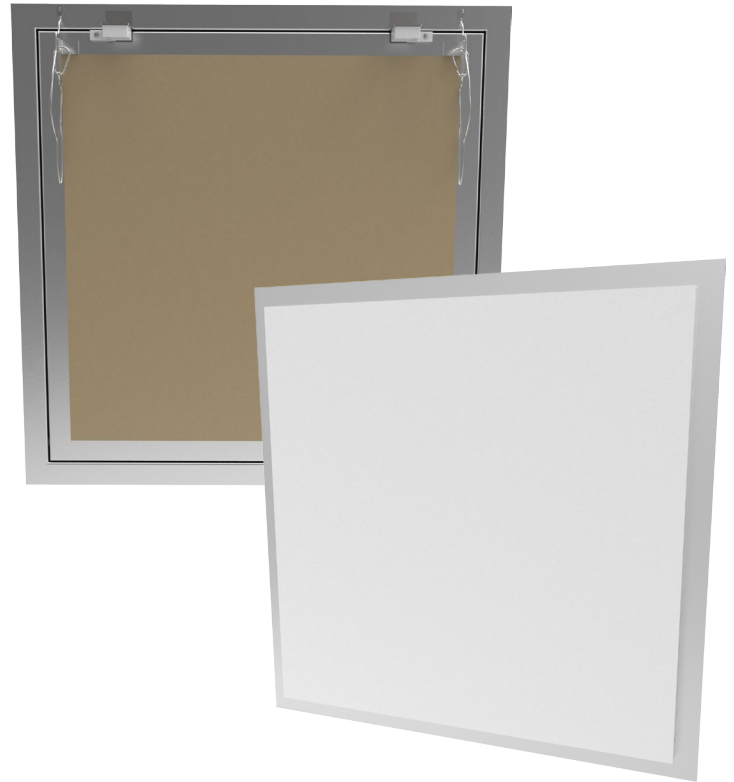
## ACCESS DOOR

The Drywall Access Door comes with standard 1/2 inch or 5/8 inch drywall installed in the door pan. Available in five standard sizes and three door styles for various application requirements.

### FEATURES

**PUSH LATCHING DOOR** Once installed, this door gives the desired appearance architects look for. The door quickly and easily opens and closes with the magnetic push-catch latch.

**SAFETY CORD** For overhead applications, this safety cord supports the door while opening the unit.



### DETAILS

**DOOR** Welded Aluminum, Drywall Infill

**FRAME** Welded Aluminum

#### SIZE

- Min: 8 inches by 8 inches
- Max: 24 inches by 24 inches

**INSTALLATION** Ceiling or Wall

**LATCH** Push Latch

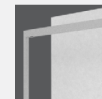
**HINGE** Welded Pin

**FINISH** Mill

### APPLICATION



STB Pin Hinge



Removable Door



Tile

### OPTIONS



Screwdriver Cam Latch



Key Operated Cam Lock



Double Door

### ORDER GUIDE

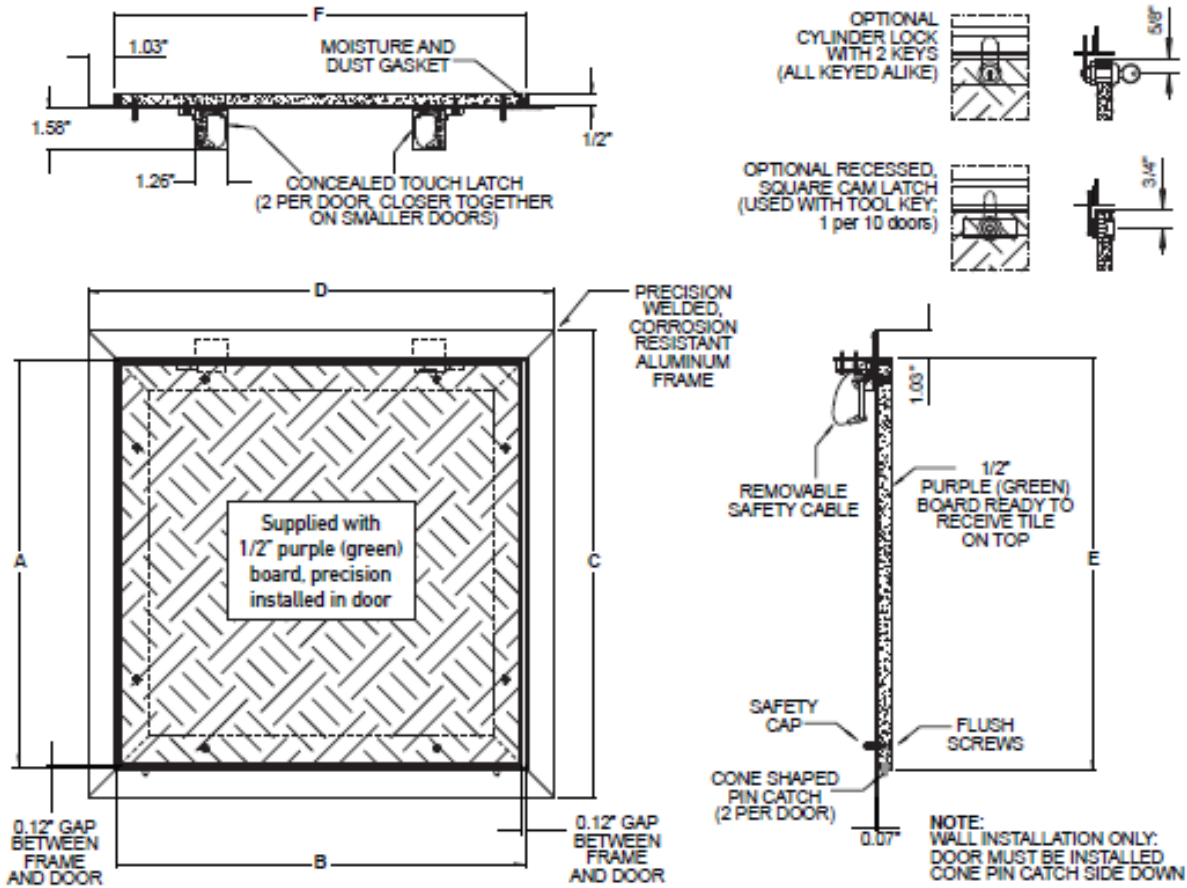
BASE	APPLICATION	WIDTH	X	LENGTH	OPTIONS	INFILL
<b>BRG</b>			<b>X</b>			—
	<b>B</b> STB Pin Hinged	Standard Sizes (W x L)			<b>C</b> Screwdriver Cam Latch	<b>500</b> 1/2" drywall
	<b>BR</b> Removable Door	8" x 8"	16" x 16"	24" x 24"	<b>D</b> Double Door	<b>625</b> 5/8" drywall
	<b>T</b> Tile	12" x 12"	20" x 20"		<b>L</b> Key Operated Cam Lock	

**SPECIFICATIONS:**

- CONCEALED TOUCH LATCH
- WELDED ALUMINUM FRAME
- WELDED ALUMINUM, NON-HINGED, REMOVABLE DOOR
- PRE-INSTALLED PRECISION BACK BOARD DESIGNED TO RECEIVE TILE
- MILL FINISH
- NON-SNAG REMOVABLE SAFETY CABLE
- FOR USE IN WALLS USING 1/2" BACK BOARD
- ROUGH OPENING TO BE WIDTH/HEIGHT + 0.188"

**OPTIONS:**

- CYLINDER LOCK WITH 2 KEYS (ALL KEYED ALIKE)
- RECESSED SQUARE CAM LATCH (USE WITH TOOL KEY, 1 PER 10 DOORS)



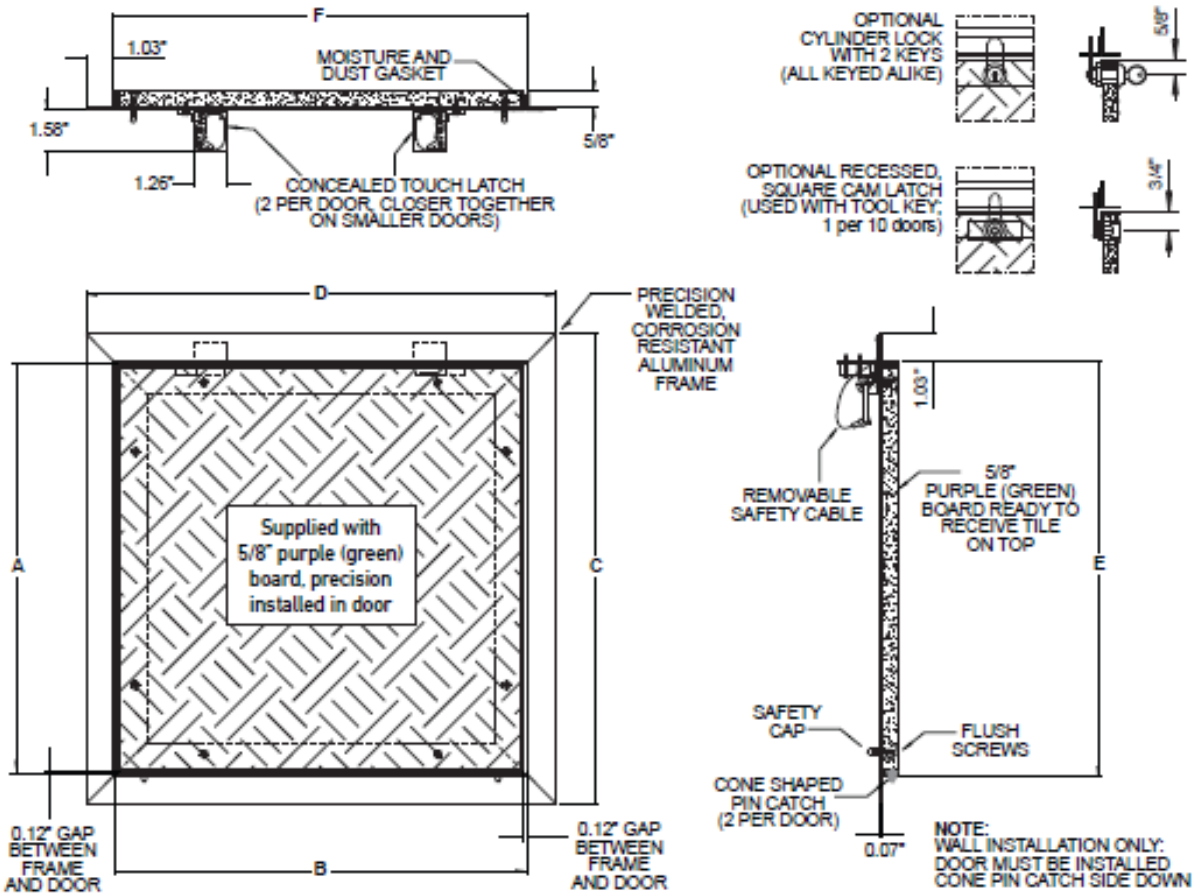
QTY.	NOMINAL SIZE		A		B		C		D		E		F	
	Inch	mm	Inch	mm	Inch	mm	Inch	mm	Inch	mm	Inch	mm	Inch	mm
	8 x 8	203 x 203	8.00	203	8.00	203	10.20	258	10.20	258	8.14	207	8.14	207
	12 x 12	305 x 305	12.00	305	12.00	305	14.20	359	14.20	359	12.14	308	12.14	308
	16 x 16	406 x 406	16.00	406	16.00	406	18.20	461	18.20	461	16.14	410	16.14	410
	20 x 20	508 x 508	20.00	508	20.00	508	22.20	562	22.20	562	20.14	512	20.14	512
	24 x 24	610 x 610	24.00	610	24.00	610	26.20	664	26.20	664	24.14	613	24.14	613

**SPECIFICATIONS:**

- CONCEALED TOUCH LATCH
- WELDED ALUMINUM FRAME
- WELDED ALUMINUM, NON-HINGED, REMOVABLE DOOR
- PRE-INSTALLED PRECISION BACK BOARD DESIGNED TO RECEIVE TILE
- MILL FINISH
- NON-SNAG REMOVABLE SAFETY CABLE
- FOR USE IN WALLS USING 5/8" BACK BOARD
- ROUGH OPENING TO BE WIDTH/HEIGHT + 0.188"

**OPTIONS:**

- CYLINDER LOCK WITH 2 KEYS (ALL KEYED ALIKE)
- RECESSED SQUARE CAM LATCH (USE WITH TOOL KEY, 1 PER 10 DOORS)



QTY.	NOMINAL SIZE		Inch A		Inch B		Inch C		Inch D		Inch E		Inch F	
	Inch	mm	Inch	mm	Inch	mm	Inch	mm	Inch	mm	Inch	mm	Inch	mm
	8 x 8	203 x 203	8.00	203	8.00	203	10.20	258	10.20	258	8.14	207	8.14	207
	12 x 12	305 x 305	12.00	305	12.00	305	14.20	359	14.20	359	12.14	308	12.14	308
	16 x 16	406 x 406	16.00	406	16.00	406	18.20	461	18.20	461	16.14	410	16.14	410
	20 x 20	508 x 508	20.00	508	20.00	508	22.20	562	22.20	562	20.14	512	20.14	512
	24 x 24	610 x 610	24.00	610	24.00	610	26.20	664	26.20	664	24.14	613	24.14	613