

Concealed

HINGED ACCESS DOOR

Designed for both ceiling and wall applications, the GFR panel can be used anywhere a locked door is required but style is still of utmost importance. The seamless design of these access doors blend into the surrounding drywall for a clean, upscale appearance.

FEATURES

ECO FRIENDLY These panels contain a 70% post-consumer recycled glass content for a truly GREEN product.

OPTIONAL LOCKS Constructed with European style hinges and choice of screwdriver cam latch or keyed cam lock.

CORNER OPTIONS Standard and custom sizes available in radius or square corners.



DETAILS

DOOR Gypsum Fiber Reinforced

FRAME Gypsum Fiber Reinforced

DOOR SHAPE Radius Corner or Square Corner

SIZE

- Min: 6 inches by 6 inches
- Max: 30 inches by 30 inches

INSTALLATION Wall or Ceiling

FLANGE Drywall

HINGE European

FINISH Unfinished Gypsum, Natural Gypsum White

ORDER GUIDE

BASE	DOOR SHAPE	LATCH	WIDTH	X	LENGTH
BGFR			—	X	
	R Radius Corner S Square Corner	C Screwdriver Cam Latch L Keyed Cam Lock	Standard Sizes (W x L) 9" x 9" 18" x 18" 12" x 12" 24" x 24" 16" x 16" 30" x 30"		

Rough opening is door size + 6 inches.

Additional sizes available, call for more information.

FINISH



Natural Gypsum White

DOOR SHAPE



Radius Corner



Square Corner

LATCHES



Screwdriver Cam Latch

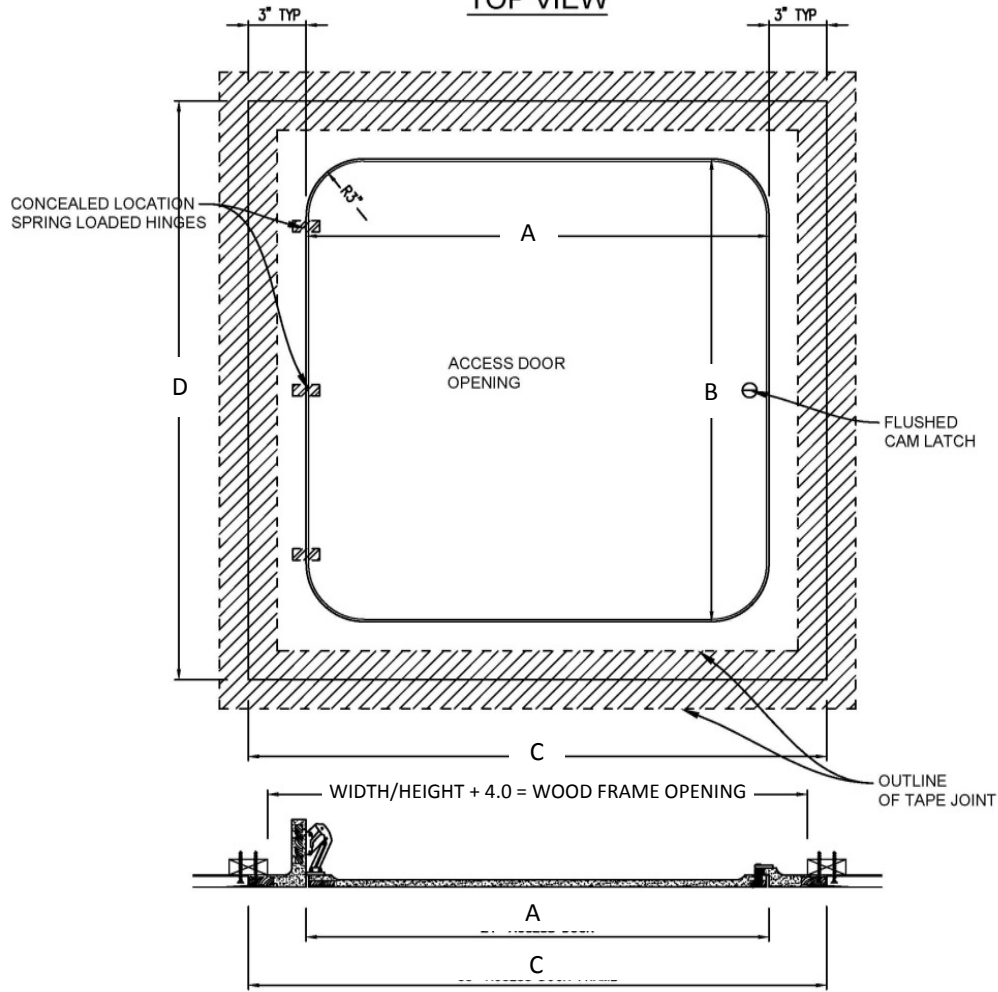


Keyed Cam Lock

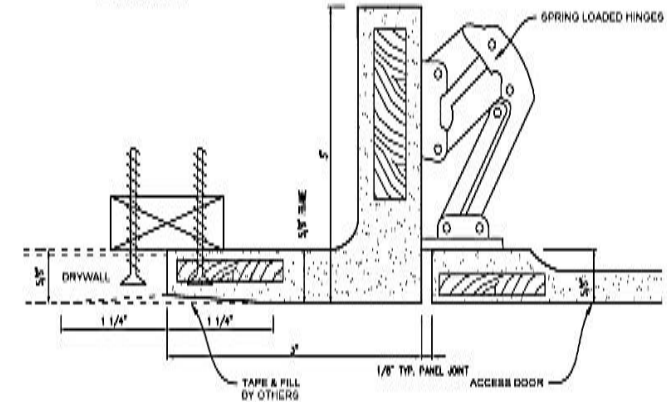
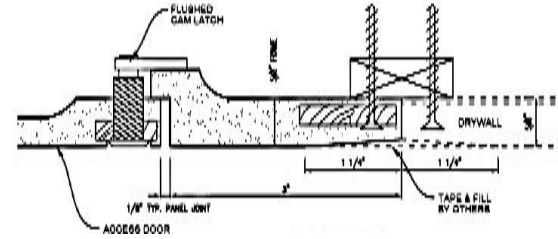
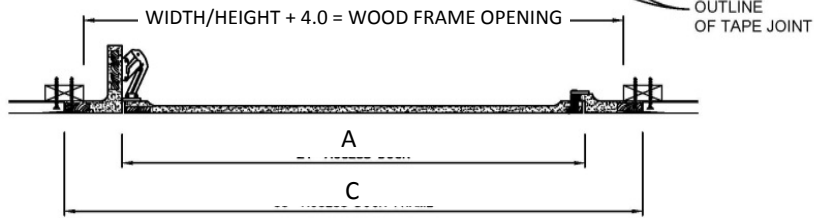
For more information, contact
Access Doors and Panels
www.accessdoorsandpanels.com

Phone: 1-800-609-2917
Fax: 1-888-828-6021
Email: info@accessdoorsandpanels.com

TOP VIEW



SECTION VIEW



MATERIALS/TECHNICAL DATA:

- High Density Gypsum Cement Plaster, Natural White
- Post-Consumer Recycled Glass (70% by volume)
- Multi-layered Fiberglass Mat
- Plywood Embedment
- Flush Cam Latch
- Concealed Spring Hinge, (3)

OPTIONS:

- 1/2" X 1/8" Neoprene Gasket

QTY	PART #	DIM A (DOOR WIDTH)	DIM B (DOOR HEIGHT)	DIM C (ROUGH OPENING WIDTH)	DIM D (ROUGH OPENING HEIGHT)
	GFRR-2424	24.0"	24.0"	30.0"	30.0"
	GFRR-3030	30.0"	30.0"	36.0"	36.0"

PROJECT:			
ARCHITECT:			
CONTRACTOR:			
QTY:			
PART#:			
		TITLE:	
9300 73rd Avenue North Brooklyn Park, MN 55428			
NAME	DATE	SIZE	DWG. NO.
RELEASED		A	
			REV -
			SHEET 1