

# Concealed

## HINGED ACCESS DOOR

Designed for both ceiling and wall applications, the GFR panel can be used anywhere a locked door is required but style is still of utmost importance. The seamless design of these access doors blend into the surrounding drywall for a clean, upscale appearance.

### FEATURES

**ECO FRIENDLY** These panels contain a 70% post-consumer recycled glass content for a truly GREEN product.

**OPTIONAL LOCKS** Constructed with European style hinges and choice of screwdriver cam latch or keyed cam lock.

**CORNER OPTIONS** Standard and custom sizes available in radius or square corners.



### DETAILS

**DOOR** Gypsum Fiber Reinforced

**FRAME** Gypsum Fiber Reinforced

**DOOR SHAPE** Radius Corner or Square Corner

#### SIZE

- Min: 6 inches by 6 inches
- Max: 30 inches by 30 inches

**INSTALLATION** Wall or Ceiling

**FLANGE** Drywall

**HINGE** European

**FINISH** Unfinished Gypsum, Natural Gypsum White

### ORDER GUIDE

BASE	DOOR SHAPE	LATCH	WIDTH	X	LENGTH
BGFR			—	X	
	<b>R</b> Radius Corner <b>S</b> Square Corner	<b>C</b> Screwdriver Cam Latch <b>L</b> Keyed Cam Lock	<b>Standard Sizes (W x L)</b> 9" x 9"      18" x 18" 12" x 12"    24" x 24" 16" x 16"    30" x 30"		

*Rough opening is door size + 6 inches.*

*Additional sizes available, call for more information.*

### FINISH



Natural Gypsum White

### DOOR SHAPE



Radius Corner



Square Corner

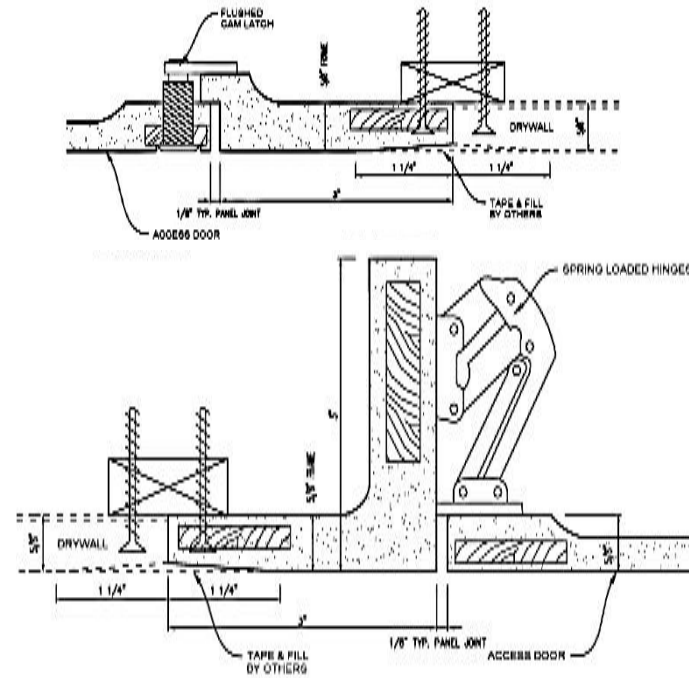
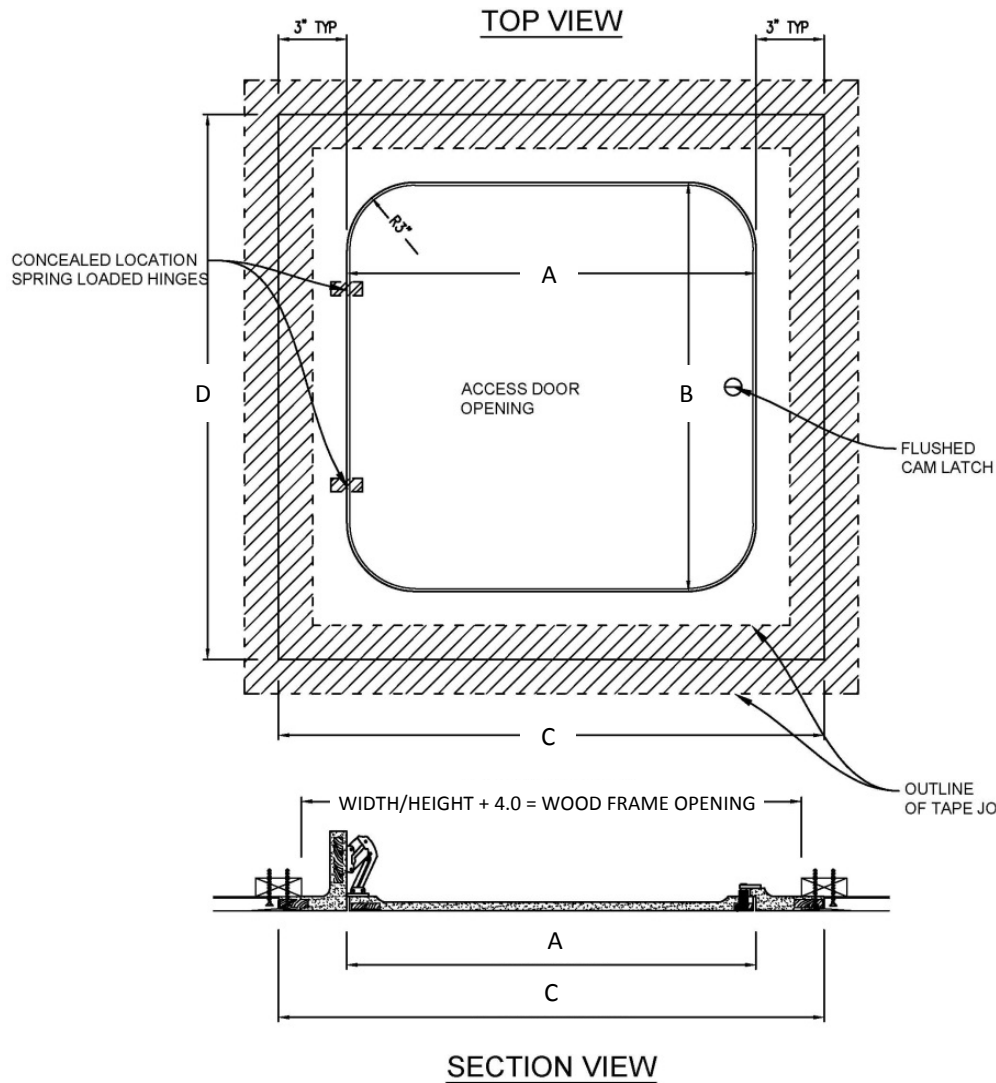
### LATCHES



Screwdriver Cam Latch



Keyed Cam Lock



**MATERIALS/TECHNICAL DATA:**

- High Density Gypsum Cement Plaster, Natural White
- Post-Consumer Recycled Glass (70% by volume)
- Multi-layered Fiberglass Mat
- Plywood Embedment
- Flush Cam Latch
- Concealed Spring Hinge, (2)

**OPTIONS:**

- 1/2" X 1/8" Neoprene Gasket

QTY	PART #	DIM A (DOOR WIDTH)	DIM B (DOOR HEIGHT)	DIM C (ROUGH OPENING WIDTH)	DIM D (ROUGH OPENING HEIGHT)
	GFRR-0909	9.0"	9.0"	15.0"	15.0"
	GFRR-1212	12.0"	12.0"	18.0"	18.0"
	GFRR-1616	16.0"	16.0"	22.0"	22.0"
	GFRR-1818	18.0"	18.0"	24.0"	24.0"

PROJECT:			
ARCHITECT:			
CONTRACTOR:			
QTY:			
PART#:			
 9300 73rd Avenue North Brooklyn Park, MN 55428		TITLE:	
NAME	DATE	SIZE	DWG. NO.
RELEASED		A	
			REV -
			SHEET 1

PROPRIETARY AND CONFIDENTIAL: THE INFORMATION CONTAINED IN THIS DRAWING IS THE SOLE PROPERTY OF BABCOCK-DAVIS. ANY REPRODUCTION IN PART OR AS A WHOLE WITHOUT THE WRITTEN PERMISSION OF BABCOCK-DAVIS IS PROHIBITED.