

Uninsulated

FIRE-RATED ACCESS DOOR

Babcock-Davis' UL Listed Uninsulated Access Door is designed for use in fire-rated walls while providing access to critical building components.

DETAILS

DOOR 14 gauge Steel, Self-Closing

FRAME 16 gauge Steel

SIZE

- Min: 6 inches by 6 inches
- BUT Max: 24 inches by 72 inches or 48 inches by 48 inches
- BUW/BUP Max: 36 inches by 48 inches

INSTALLATION Wall

FLANGE Exposed, Drywall Bead or Plaster Bead

HINGE

- BUT: Flush Continuous Piano
- BUW/BUP: Concealed Pin

FINISH White Powder Coat

CERTIFICATION UL listed "B" label for 1-1/2 hours



ORDER GUIDE

BASE	FLANGE	LATCH	WIDTH	X	LENGTH	OPTIONS
BU				X		
	T 1 inch flange W Drywall bead P Plaster Bead	K Knurled latch/ key operated latch bolt M Mortise lock (1-1/8") prep	Standard Sizes (W x L) 8" x 8" 18" x 18" 24" x 30" 10" x 10" 18" x 24" 24" x 36" 12" x 12" 20" x 30" 24" x 48" 12" x 18" 22" x 22" 30" x 30" 12" x 24" 22" x 30" 32" x 32" 14" x 14" 22" x 36" 36" x 36" 16" x 16" 24" x 24" 36" x 48"		B Galvannealed G Gasketing M Masonry Anchors S Type 304 Stainless Steel	

Rough opening is door size + 1/4 inch minimum. Additional sizes available, call for more information.

Oversized Attic

FIRE-RATED ACCESS DOOR

The Oversized Attic Access Door allows access into ceilings when over-sized or double door applications are required. The double leaf design, with a removable center mullion, allows objects to clear which may interfere with door openings.

DETAILS

DOOR 18 gauge Steel

FRAME 16 gauge Steel

SIZE

- Min: 36 inches by 60 inches
- Max: 48 inches by 60 inches

INSTALLATION Wall or Ceiling

FLANGE Exposed

HINGE Continuous Rod or Piano

FINISH Off White Prime Coat

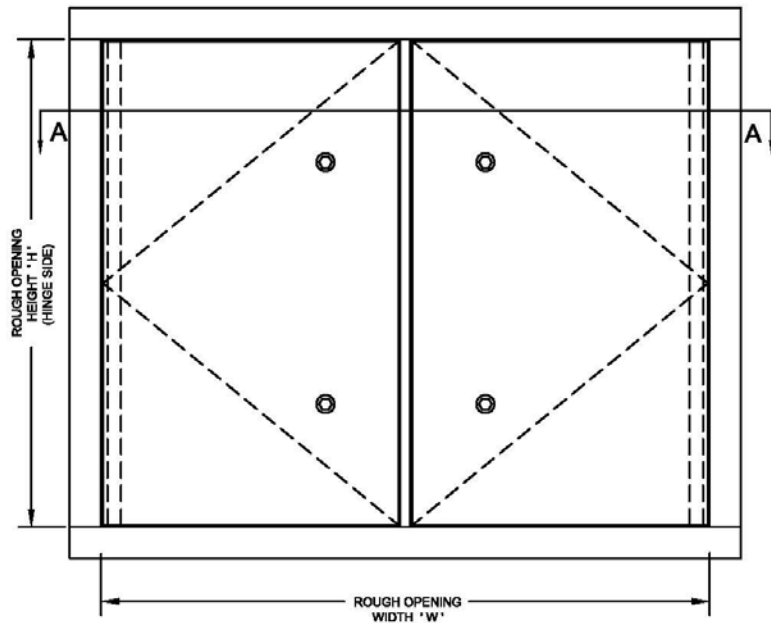
CERTIFICATION Warnock-Hersey listed for 2 hours



ORDER GUIDE

BASE	WIDTH	X	LENGTH	OPTIONS
BFRD		X		
	Standard Sizes (W x L) 36" x 60" 40" x 60" 48" x 60"			C Ceiling Application D Double Door M Mortise Lock (1-1/8") prep S Type 304 Stainless Steel T 3-Hour Rated W Wall Application

Rough opening is door size. Additional sizes available, call for more information.



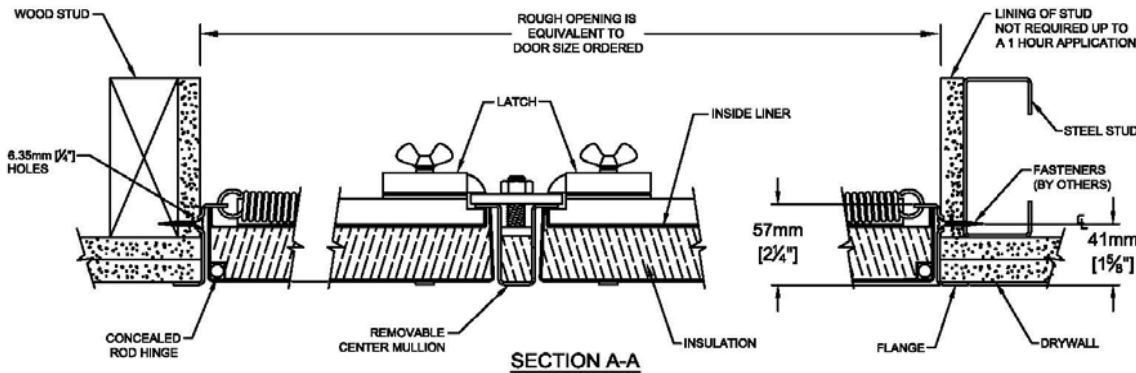
STANDARD CONSTRUCTION:

- MATERIAL** - SATIN FINISH GALVANIZED (GALVANNEALED) STEEL.
- PANEL** - 1.31mm [18 ga.], SELF CLOSING.
- LINER** - 0.85mm [22ga.]
- FRAME** - 1.61mm [16 ga.] UP TO AND INCLUDING 762mm x 1219mm [30" x 48"]; LARGER SIZES 1.99mm [14ga.]
- FLANGE** - EXTERIOR FLANGE WIDTH 22mm [$\frac{7}{8}$ "] UP TO AND INCLUDING 914mm x 914mm [36" x 36"]; LARGER SIZES 32mm [$1\frac{1}{4}$ "].
- HINGE** - CONTINUOUS ROD HINGE. PIANO HINGE STANDARD ON PANELS EXCEEDING 1219mm [48"] IN A WALL POSITION.
- LATCH** - $\frac{1}{2}$ " ALLEN KEY, WITH INTERIOR RELEASE.
- INSULATION** - 38mm [$1\frac{1}{2}$ "] HIGH TEMPERATURE.
- FINISH** - RUST INHIBITIVE PRIME COAT (OFF-WHITE).



FRD D wall and ceiling fire-rated panels are manufactured under the factory inspection service of Intertek (Warnock Hersey) and have a label reading: "Listed access frame and insulated fire door assembly 2 hour fire rating. Vertical and Horizontal Installation."

Temperature rise maximum 139°C/ 250°F at 30 minutes, 250°C/450°F at 60 minutes.



PROJECT:			
ARCHITECT:			
CONTRACTOR:			
QTY:			
PART#:			
<p>9300 73rd Avenue North Brooklyn Park, MN 55428</p>		TITLE:	
NAME	DATE	SIZE	DWG. NO.
DRAWN		A	
RELEASED			
			REV -
			SHEET 1

PROPRIETARY AND CONFIDENTIAL: THE INFORMATION CONTAINED IN THIS DRAWING IS THE SOLE PROPERTY OF BABCOCK-DAVIS. ANY REPRODUCTION IN PART OR AS A WHOLE WITHOUT THE WRITTEN PERMISSION OF BABCOCK-DAVIS IS PROHIBITED.

OPTIONS: * - DENOTES ADDITIONAL COST.

- * - OPTIONAL MATERIAL - 304 STAINLESS STEEL WITH A NO. 4 POLISHED FINISH ON THE EXTERIOR SURFACE, c/w CONTINUOUS PIANO HINGE.
- * - CONTINUOUS PIANO HINGE. (ON PANEL LESS THAN 1219mm [48"].)
- ALLEN KEY.
- RAISED KNURLED KNOB.
- * - NON-LOCKING HANDLE.
- * - 1½" MORTISE PREP ONLY.
- * - 1½" MORTISE PREP COMPLETE WITH MORTISE CYLINDER.

STANDARD SIZES

Double leaf construction for walls and ceilings.

Qty	Rough Opening Size W x H		No. of Latches/Locks	Weight In kgs.	Weight In lbs.
	Metric (mm)	Inches			
	1524 x 610	60 x 24	2	35.38	78.00
	1524 x 762	60 x 30	2	40.82	90.00
	914 x 1219	36 x 48	2	38.55	85.00
	1219 x 914	48 x 36	2	38.10	84.00
	1524 x 914	60 x 36	4	47.62	105.00
	1016 x 1016	40 x 40	2	35.83	79.00
	1016 x 1219	40 x 48	4	42.18	93.00
	1219 x 1016	48 x 40	4	42.63	94.00
	1524 x 1016	60 x 40	4	51.71	114.00
	1219 x 1219	48 x 48	4	48.53	107.00
	1524 x 1219	60 x 48	4	61.23	135.00

STANDARD SIZES

Double leaf construction for walls only.

Qty	Rough Opening Size W x H		No. of Latches/Locks	Weight In kgs.	Weight In lbs.
	Metric (mm)	Inches			
	610 x 1524	24 x 60	4	33.58	74.00
	914 x 1524	36 x 60	4	50.34	111.00
	1016 x 1524	40 x 60	4	54.43	120.00
	1219 x 1524	48 x 60	4	63.50	140.00



Net Opening = Width minus 153mm [6"]
Height minus 39mm [1½"]

PART#:			TITLE:		
 9300 73rd Avenue North Brooklyn Park, MN 55428			DWG. NO.		
DRAWN			A		-
RELEASED					