

RHA ALUMINUM SHIP STAIR ACCESS ROOF HATCH

Application

- Acudor Ship Stair Roof Hatches are designed to provide convenient, economical access to the roof of a building for maintenance.

Features RHA

- Weather tight construction
- Convenient one-hand operation
- 12" high insulated curb
- Supports 40lbs./sq. ft. live load

Optional Features RHA

- Painted and Anodized finishes (RHA)
- Polycarbonate domes for daylighting
- Louvered Curbs
- Curb Mounted Units
- Curb pitch corrected for sloped roof
- Higher curb heights for "green roof" applications



RHA Specifications:

Cover: Double-skin construction ("in box type design") with 1" cellulose insulation and a continuous EPDM foam weather/draft seal gasket that is attached to the inside of cover to provide a flush, tight fit. Designed to support a live load of 40lbs./sq. ft., the cover is 10 gauge aluminum with a 20 gauge aluminum inside liner.

Curb: 10 gauge aluminum with 1" thick fiberboard roof insulation at curb exterior. Curb is 12" high, with 3.375" wide bottom flange and pre-drilled mounting holes.

Hinge: Heavy duty Aluminum pintle hinges with 3/8" pin

Opening: Gas spring operators allow cover to open and close with ease. Inside pull handle allows for easy control when closing cover.

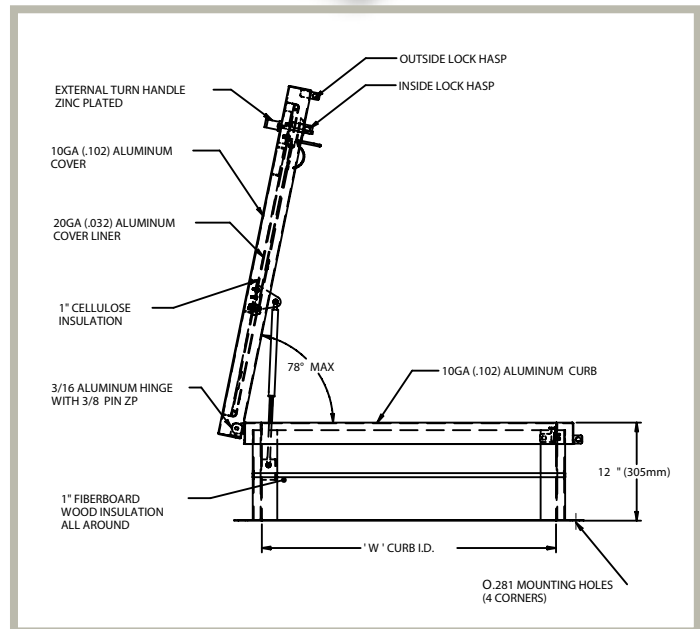
Door Latch: Self latching, zinc plated outside T handle with stainless steel inside lock and lever assembly. Unit also has inside and outside padlock provisions.

Finish: Mill finish.

RHA STANDARD SIZES *(other sizes available)*

| Model | Curb ID W&L inches (mm) | Weight per Hatch lbs. (kg.) |
|-------|----------------------------|--------------------------------|
| A3862 | 30 x 54 (762 x 1372) | 135 (61.4) |

For detailed specifications see submittal sheet





www.accessdoorsandpanels.com
 Phone: 1-800-609-2917
 Fax: 1-888-828-6021
 Email: info@accessdoorsandpanels.com

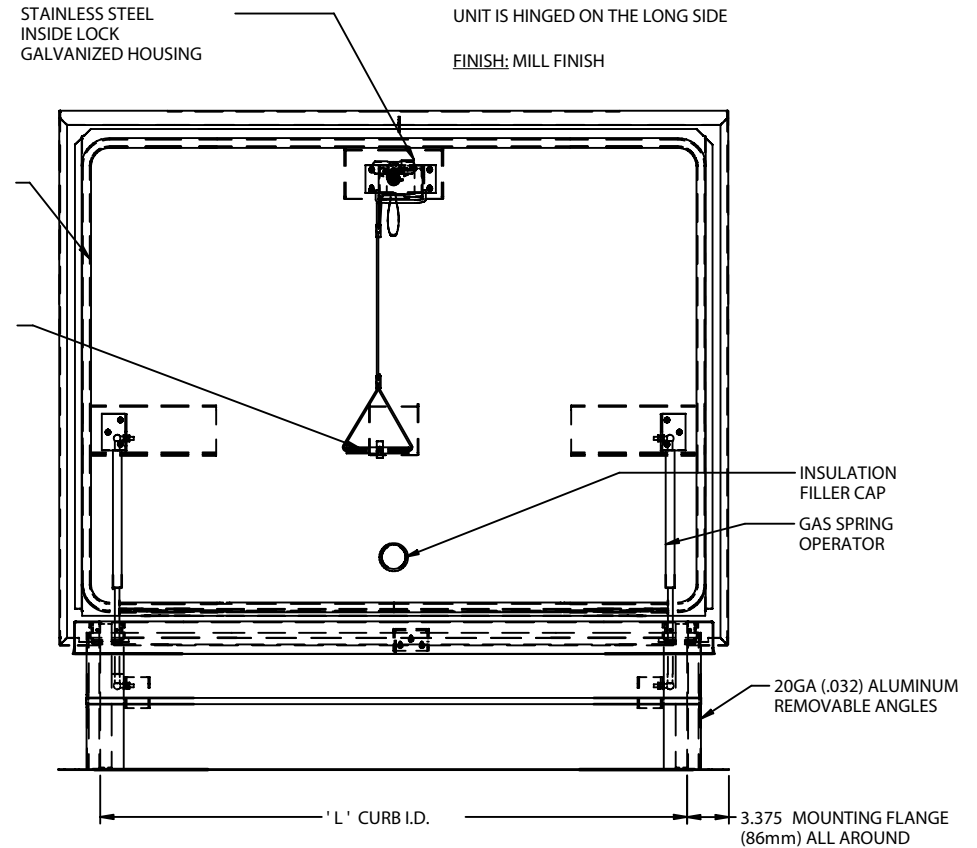
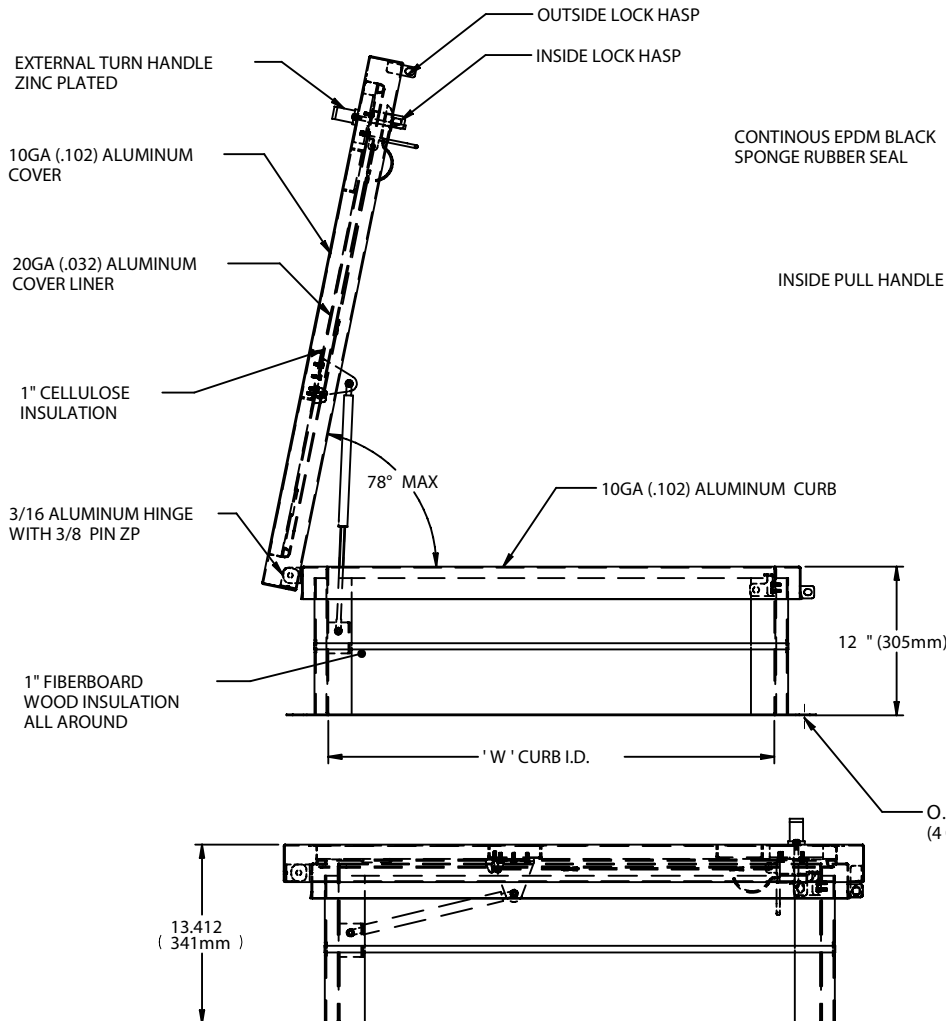
SHIP STAIR ACCESS ROOF HATCH ALUMINUM

| QTY | OPENING WIDTH "W" | OPENING LENGTH "L" | QTY | OPENING WIDTH "W" | OPENING LENGTH "L" |
|-----|-------------------|--------------------|-----|-------------------|--------------------|
| | 30" (762mm) | 54" (1372mm) | | | |
| | | | | | |
| | | | | | |
| | | | | | |

ASSEMBLY NOTE:
 UNIT SHALL BE COMPLETELY ASSEMBLED AS SHOWN
 AND SUPPLIED TO JOB READY FOR INSTALLATION

UNIT IS HINGED ON THE LONG SIDE

FINISH: MILL FINISH



JOB NAME:

APPROVED BY:

CUSTOMER:

DATE:

COPYRIGHT © 2014 ACUDOR ACCESS DOORS AND ACUDOR PRODUCTS INC. ALL RIGHTS RESERVED