

# RHA ALUMINUM SERVICE STAIR ACCESS ROOF HATCH

## Application

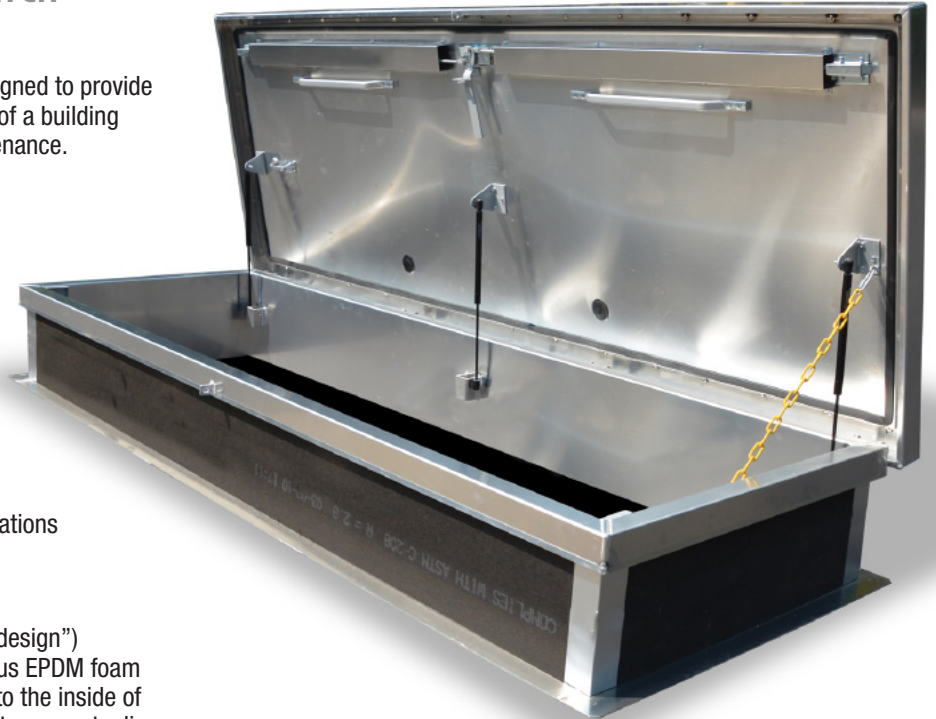
- Acudor Service Stair Roof Hatches are designed to provide convenient, economical access to the roof of a building from a full size staircase to perform maintenance.

## Features RHA

- Weather tight construction
- Convenient one-hand operation
- 12" high insulated curb
- Supports 40lbs./sq. ft. live load

## Optional Features RHA

- Painted and Anodized finishes (RHA)
- Polycarbonate domes for daylighting
- Louvered Curbs
- Curb Mounted Units
- Curb pitch corrected for sloped roof
- Higher curb heights for "green roof" applications



## RHA Specifications:

**Cover:** Double-skin construction ("in box type design") with 1" cellulose insulation and a continuous EPDM foam weather/draft seal gasket that is attached to the inside of cover to provide a flush, tight fit. Designed to support a live load of 40lbs./sq. ft., the cover is 1/8" aluminum with a 20 gauge aluminum inside liner.

**Curb:** 1/8" thick aluminum with 1" thick fiberboard roof insulation at curb exterior. Curb is 12" high, with 3.375" wide bottom flange and pre-drilled mounting holes.

**Hinge:** Heavy duty Aluminum pintle hinges with 3/8" pin

**Opening:** Gas spring operators allow cover to open and close with ease. Inside pull handle allows for easy control when closing cover.

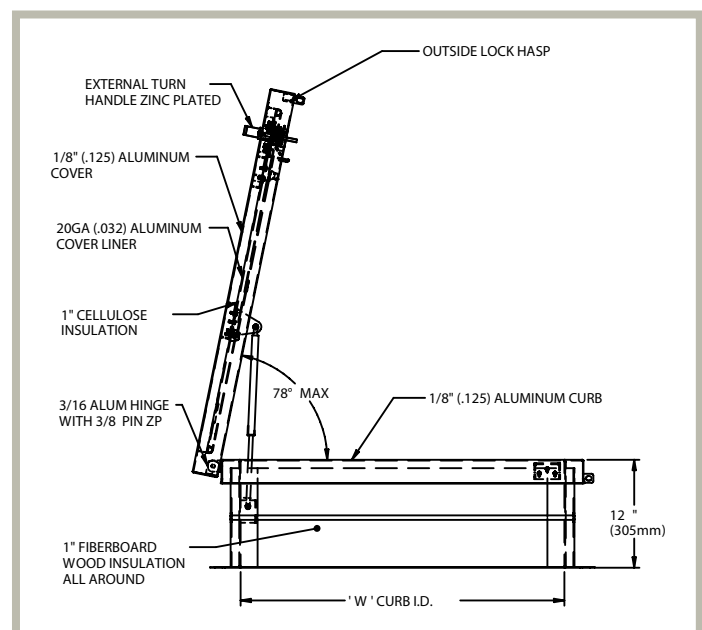
**Door Latch:** Self latching, zinc plated outside T handle with stainless steel inside lock and lever assembly. Unit also has inside and outside padlock provisions.

**Finish:** Mill finish.

## RHA STANDARD SIZES *(other sizes available)*

Model	Curb ID W&L	Weight per Hatch
	inches (mm)	lbs. (kg.)
A38104	30 x 96 (762 x 2438)	245 (111.4)

For detailed specifications see submittal sheet





www.accessdoorsandpanels.com  
 Phone: 1-800-609-2917  
 Fax: 1-888-828-6021  
 Email: info@accessdoorsandpanels.com

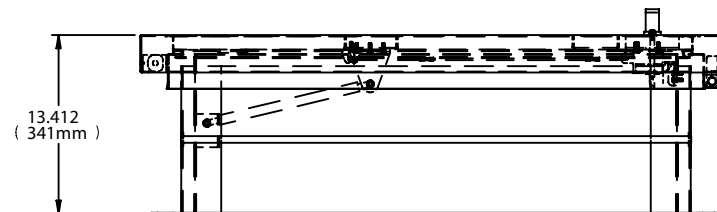
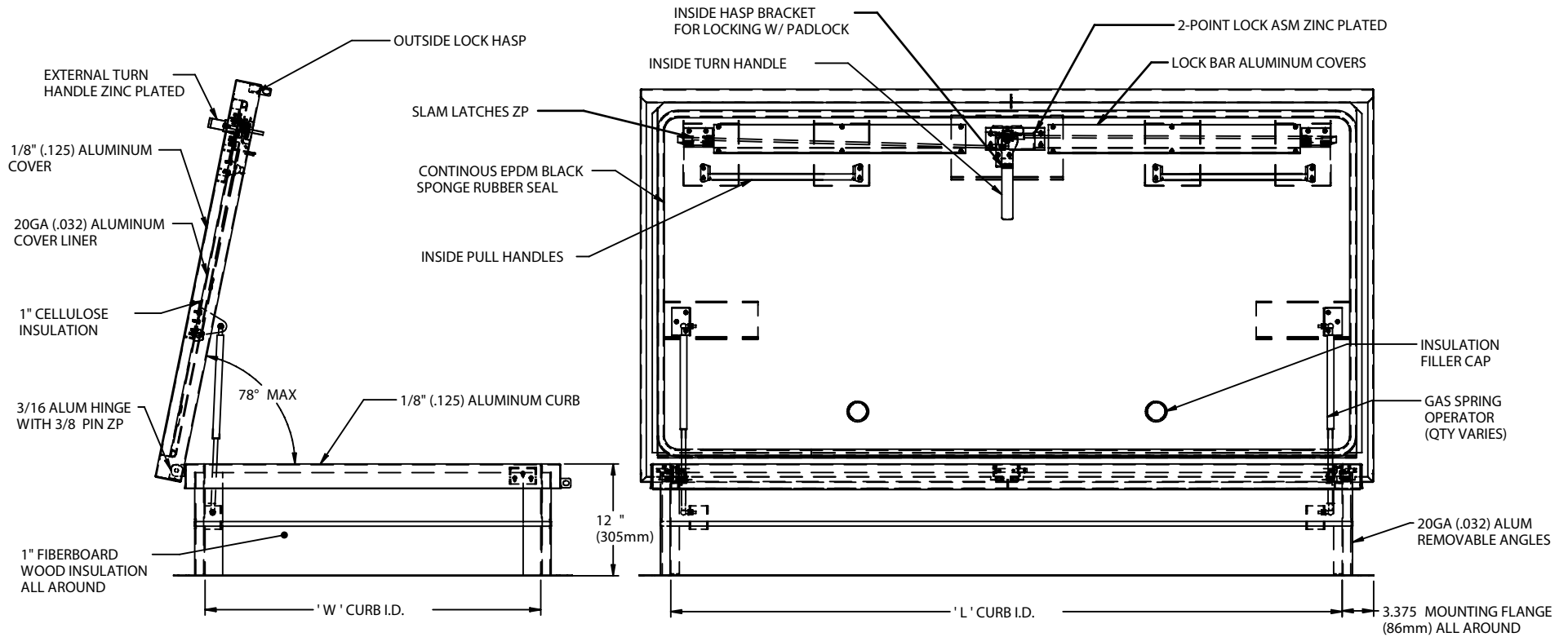
## SERVICE STAIR ACCESS ROOF HATCH ALUMINUM

QTY	OPENING WIDTH "W"	OPENING LENGTH "L"	QTY	OPENING WIDTH "W"	OPENING LENGTH "L"
	30" (762mm)	96" (2438mm)			

**ASSEMBLY NOTE:**  
 UNIT SHALL BE COMPLETELY ASSEMBLED AS SHOWN  
 AND SUPPLIED TO JOB READY FOR INSTALLATION

UNIT IS HINGED ON THE LONG SIDE

**FINISH:** MILL FINISH



JOB NAME:

APPROVED BY:

CUSTOMER:

DATE:

COPYRIGHT © 2014 ACUDOR ACCESS DOORS AND ACUDOR PRODUCTS INC. ALL RIGHTS RESERVED