

# DW-5058R

## Recessed Access Door, *Drywall (Round) Panel Door*

### Application

- Designed to provide access in walls and ceilings, while maintaining an invisible, architecturally pleasing appearance

### Product Features

- Designed to accommodate 5/8" drywall.
- Standard with a touch latch feature

### DW-5058R Access Door Specifications:

Material: aluminum extrusion with 5/8" drywall in door panel

Door: .080" aluminum extrusion

Door Frame: .080" aluminum extrusion recessed to provide similar edge to drywall bead to allow for finishing of wall or ceiling surface.

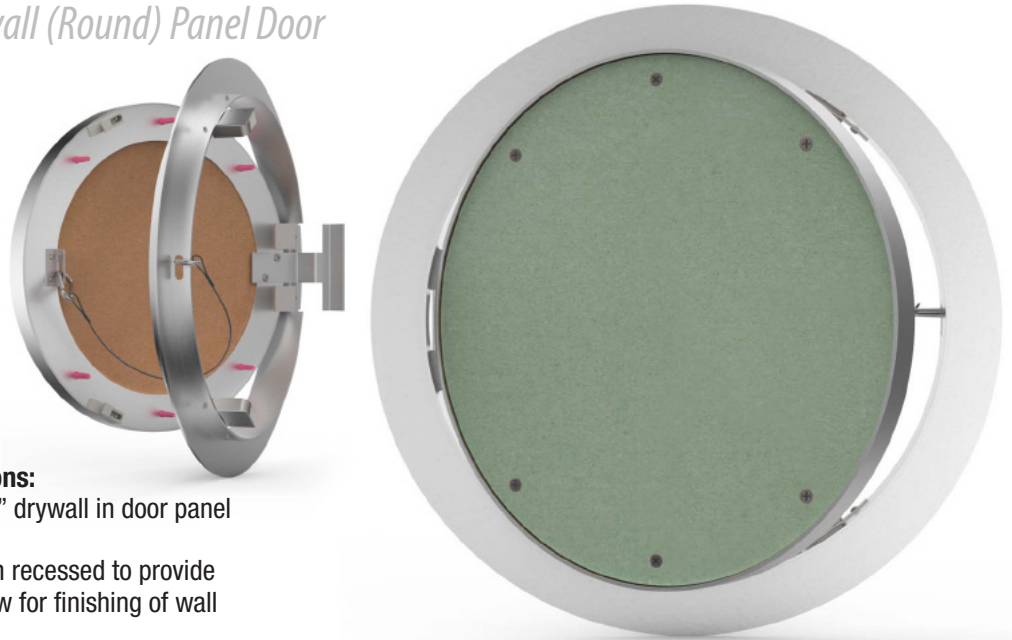
Hinge: Hinge allows door panel to open to 90 degrees, and also allows for door panel to be removed from frame.

Safety chain installed on door & frame for safety.

Standard Latch: Concealed Touch Latches

Optional Latches/Locks: Screwdriver operated cam latch, allen head cam latch, spanner head cam latch, cylinder lock & key.

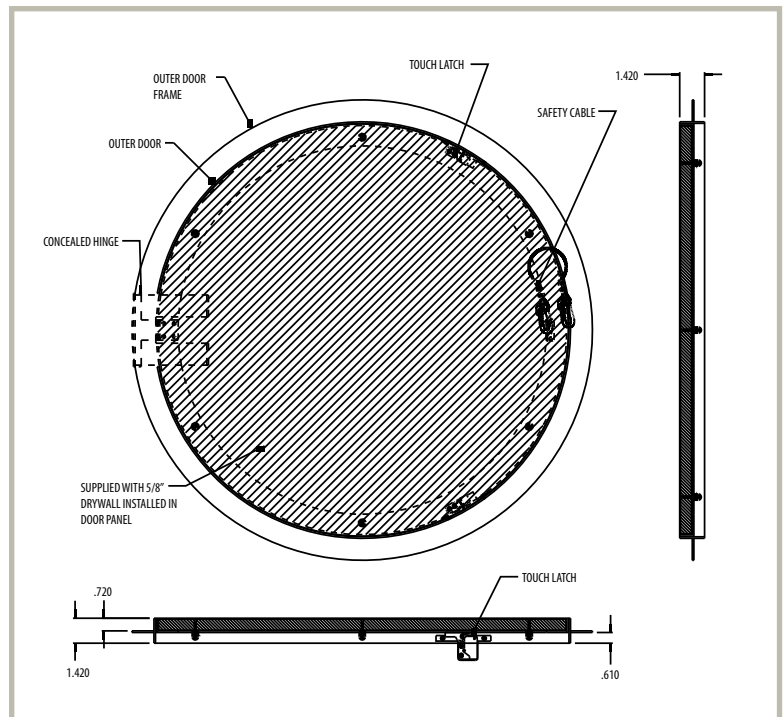
Finish: Mill Finish. Drywall is ready to be finished to match surrounding wall or ceiling surface.



### STANDARD SIZES *(other sizes available upon request)*

Door Dia.		Weight per Door	
inches	mm	lbs.	kg.
12	305	2.0	0.9
16	406	5.0	2.3
18	457	6.0	2.7
24	610	12.0	5.5

Wall opening is normal door size plus +1/2" (12mm)  
For detailed specifications see submittal sheet



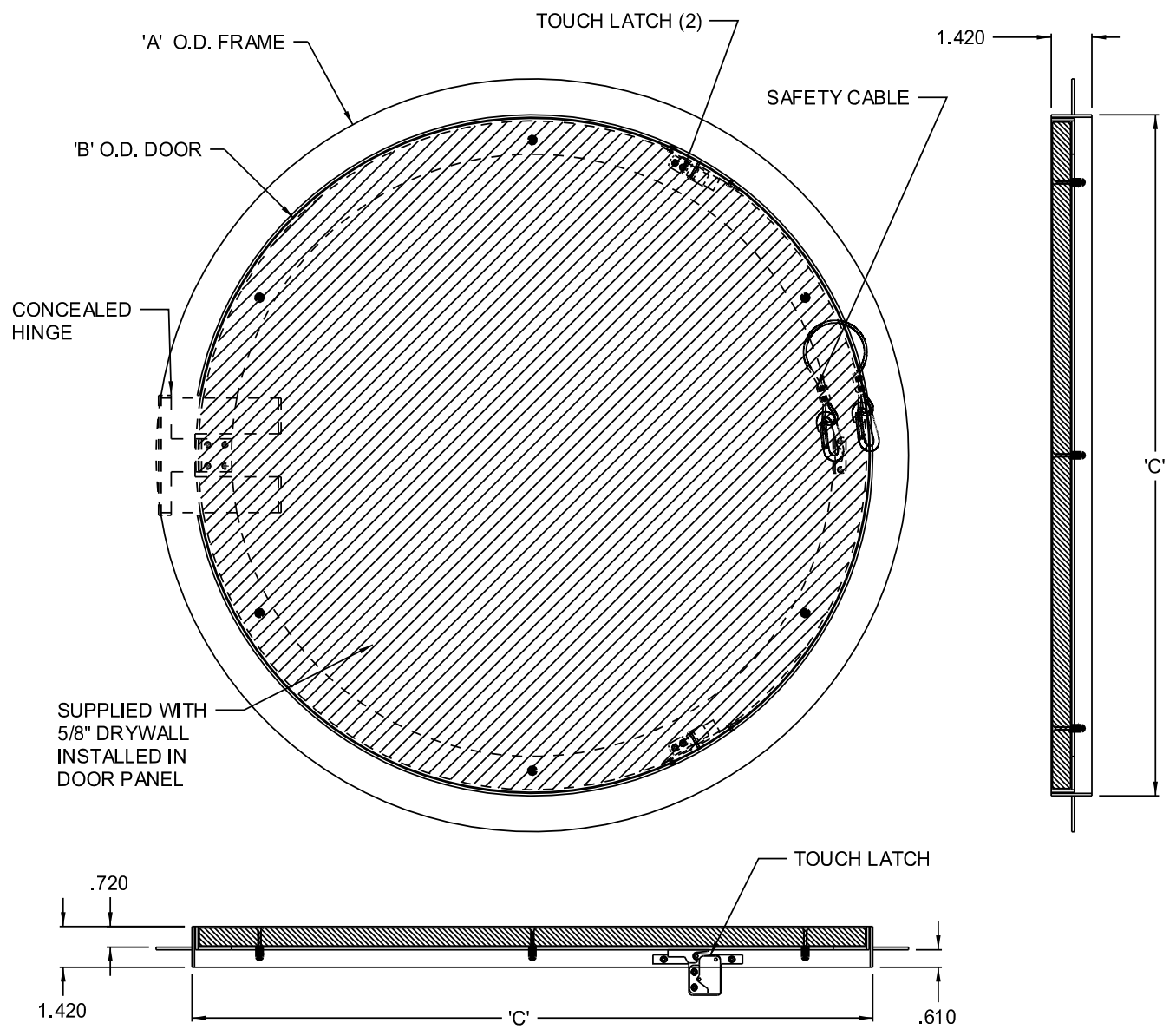


www.accessdoorsandpanels.com  
 Phone: 1-800-609-2917  
 Fax: 1-888-828-6021  
 Email: info@accessdoorsandpanels.com

# DW-5058-CD

## CIRCULAR DOOR RECESSED WITH DRYWALL

QTY.	NOMINAL SIZE	WALL OPENING SIZE	A	B	C	LOCK
	12 (305)	12.125 (308)	14.50 (368)	11.75 (298)	12 (305)	2
	16 (406)	16.125 (409)	18.50 (470)	15.75 (400)	16 (406)	2
	18 (457)	18.125 (460)	20.50 (521)	17.75 (451)	18 (457)	2
	24 (610)	24.125 (613)	26.50 (667)	23.75 (603)	24 (610)	2



**STANDARD FEATURES:**

TOUCH LATCH; REMOVABLE DOOR PANEL;  
 UNIT IS SUPPLIED TO ACCOMMODATE 5/8" DRYWALL;  
 DOOR PANEL CAN ORDERED TO ACCOMMODATE 1/2" DRYWALL.  
 ALUMINUM DOOR AND FRAME MILL FINISH

**OPTIONS: LOCK TYPE**

- SCREW DRIVER OPERATED CAM LATCH
- ALLEN HEAD CAM LATCH
- SPANNER HEAD CAM LATCH
- CYLINDER LOCK & KEY

JOB NAME:

APPROVED BY:

CUSTOMER:

DATE: