



SVA ALUMINUM

UL LISTED SMOKE VENT, Double Leaf

Application

Acudor Smoke Vents are designed to provide an economical solution for fire ventilation by removing deadly smoke, heat, and gases from a burning building.

Features SVA

- 1/8" Aluminum
- 12" high insulated curb
- UL Listed Fusible or McCabe Resettable Links
- Inside and Outside manual release
- High performance gas springs

Optional Features SVA

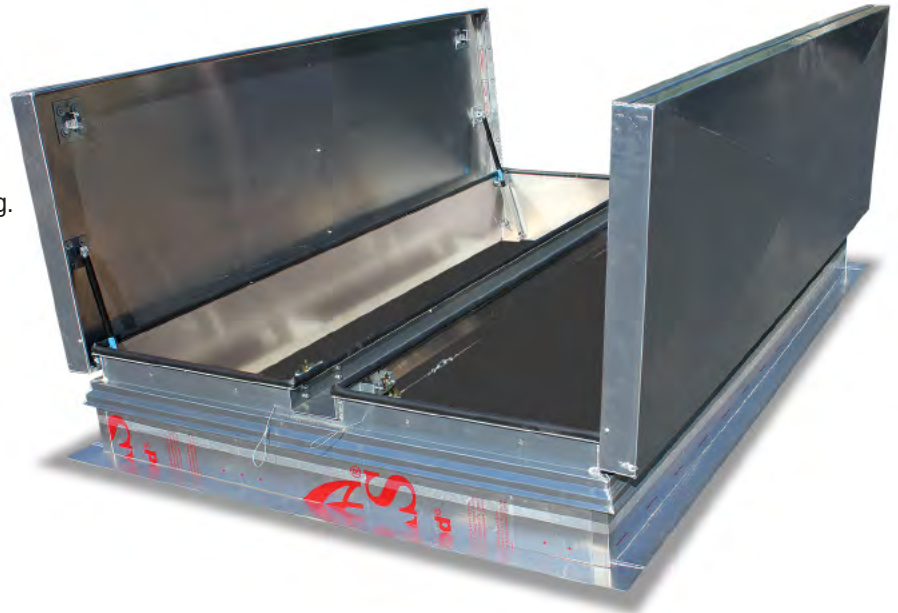
- Curb mount or Metal Building Flange
- Double-Dome Co-Polyester lids for daylighting
- Louvered curb for ventilation

SVA Specifications:

Cover: Double-skin construction ("in box type design") with 1" cellulose insulation and a continuous EPDM foam weather/draft seal gasket that is attached to the inside of cover to provide a flush, tight fit. Designed to support a live load of 40lbs./sq. ft., the cover is 11 gauge aluminum with a 20 gauge aluminum inside liner.

Curb: 1/8" Aluminum with 1" thick fiberboard roof insulation at curb exterior. Curb is 12" high, with 3.375" wide bottom flange and pre-drilled mounting holes.

Hinge: Heavy duty galvanized steel / aluminum pintle hinges with 3/8" pin



Opening: Gas spring operators allow cover to open and close with ease. Inside and outside release allows for manual lid operation.

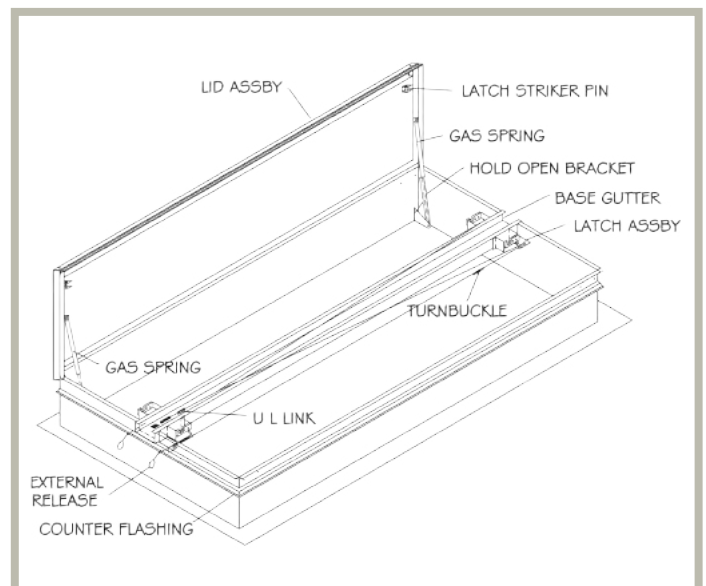
Door Latch: Self latching Slam Latch. Supplied standard with 165° UL Listed Fusible Link. Resettable McCabe link available.

Finish: Aluminum: Mill Finish

SVA STANDARD SIZES *(other sizes available)*

Model	Curb ID W&L	Weight per Hatch
	inches (mm)	
SVA4848	48 x 48 (1219 x 1219)	105 (48)
SVA4872	48 x 72 (1219 x 1829)	130 (59)
SVA4890	48 x 90 (1219 x 2286)	135 (61)
SVA4896	48 x 96 (1219 x 2438)	140 (64)
SVA6060	60 x 60 (1524 x 1524)	130 (59)
SVA6072	60 x 72 (1524 x 1829)	135 (61)
SVA6090	60 x 90 (1524 x 2286)	165 (75)
SVA6096	60 x 96 (1524 x 2438)	170 (77)

For detailed specifications see submittal sheet

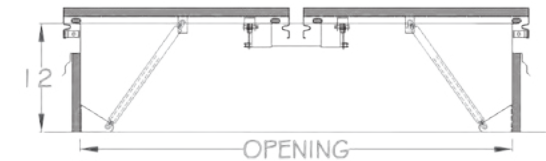
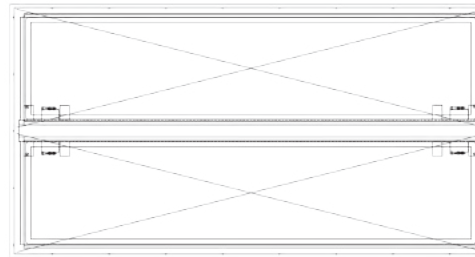
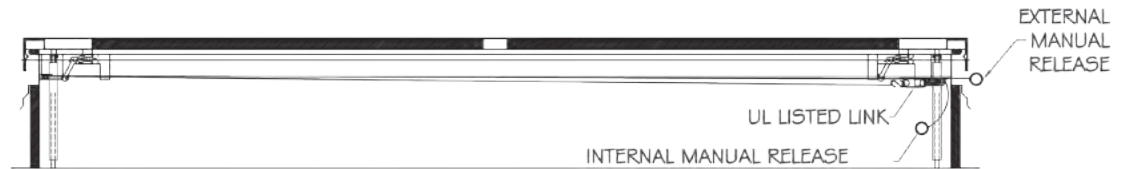
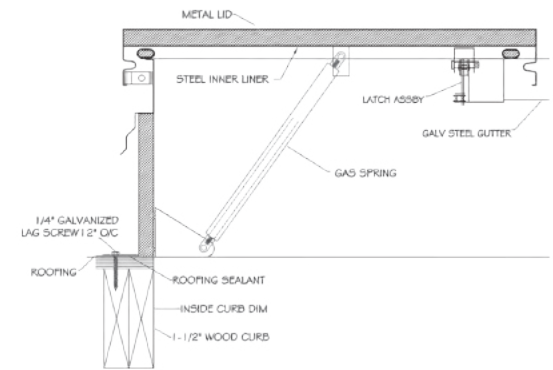
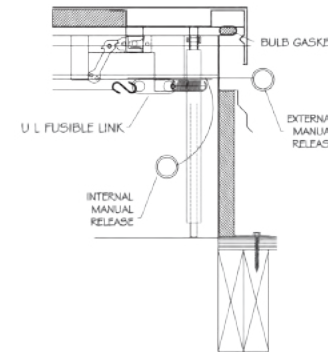
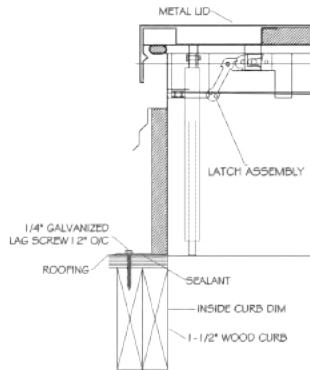
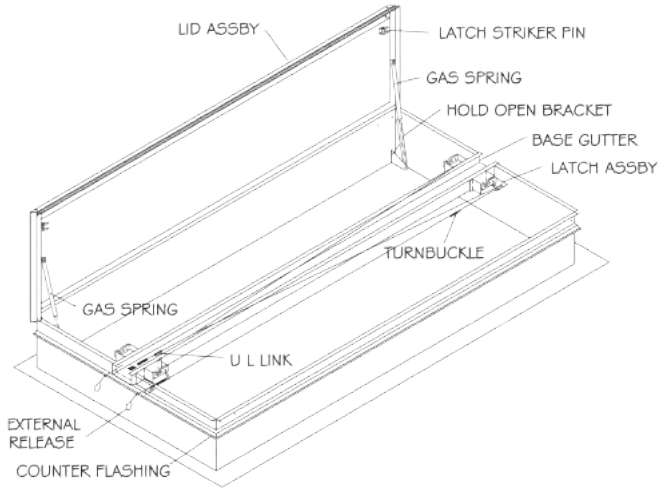




Access Doors and Panels
 www.AccessDoorsAndPanels.com
 info@accessdoorsandpanels.com
 Phone: 1-800-609-2917
 Fax: 1-888-626-2907

QTY	OPENING WIDTH "W"	OPENING LENGTH "L"	QTY	OPENING WIDTH "W"	OPENING LENGTH "L"
	48" (1219mm)	48" (1219mm)		60" (1524mm)	60" (1524mm)
	48" (1219mm)	72" (1829mm)		60" (1524mm)	72" (1829mm)
	48" (1219mm)	90" (2286mm)		60" (1524mm)	90" (2286mm)
	48" (1219mm)	96" (2286mm)		60" (1524mm)	96" (2438mm)

UL LISTED SMOKE VENT, ALUMINUM



SPECIFICATIONS:

- Fully Welded & Assembled Aluminum Curb
- 4" x 4" x 3/16" Galvanized Steel OSHA Compliant Safety Screen Option
- Base options include self flashing, curb mount and metal building
- 1" Rigid Insulation R7.2
- Full perimeter EPDM bulb gaskets
- Lids open against a 10 PSF live load
- Lid uplift rating 30 PSF
- Hinges and latches 12 gauge
- Latches rated for 90 PSF uplift
- UL listed fusible or McCabe resettable links
- Inside and outside manual releases
- High performance gas springs with hold open

JOB NAME:

APPROVED BY:

CUSTOMER:

DATE: