

SUBMITTAL: SECURITY ACCESS PANELS - MODEL SP™

Our 10 gauge security access panels provide you with the solid construction and lock options for many detention and security building applications. From the heavy-duty hinges with non-removable barrels to the welded frame construction, we offer a specialty access door to meet your needs.

FLAT FRAME STEEL SECURITY PANEL

Frame: 2" x 2" x 3/16" angle frame with 2" flange, welded at corners.

Door: 10 gauge plate steel door mounted on two heavy-duty hinges welded to the frame.

Finish: White powder coat paint. See options below for more colors.

Anchors: Heavy duty steel masonry anchors welded to frame at factory.

Locks: Many lock options are available below. When door size requires additional anchoring to frame, torx security screws will be used in addition to the lock selected.

Sizes: Min. Size 8" x 8" (20.3 x 20.3 cm), *Max. Size Wall:* 36" x 36 (91.4 x 91.4 cm) or other dimensions up to 1296 in² (32.9 cm²). *Max. Size Ceiling:* 24" x 24" (71.1 x 71.1 cm)

Size Ceiling: 24" x 24" (71.1 x 71.1 cm)

STEP 1: SELECT MODEL FROM PAGE 2 OR ENTER SIZE:

_____ For sizes not shown on chart. _____" W x _____" H (See sizes above)

STEP 2: SELECT MATERIAL:

_____ 10 Gauge steel—Model SP

_____ 10 Gauge stainless steel #4 finish **SPS** (additional cost)

STEP 3: SELECT LOCK OPTIONS (see page 2):

_____ **Lock Prep Only** _____ (DDP) Detention Deadbolt Prep (no additional cost)

_____ (DSP) Detention Slam Latch Prep (no additional cost)

_____ (MCP) Mortise Cylinder Cam Lock Prep (no additional cost unless brass retaining ring is required)

_____ (MDP) Mortise Deadbolt Prep (Available at additional cost—select below also)

_____ **#0646** Brass Retaining Ring for MDP and MCP may be required for locks by others (additional cost)

_____ (CLP) Custom Lock Prep Not Shown Above (additional cost). Please attach details.

Specify Lock Model that Will Be Installed by Others So we Can Assure Prep is Correct: _____

_____ **Lock Installed - All Lock Options Below are At Additional Cost**

_____ (DD15010) Detention Deadlock Installed

_____ (DDI5017) Detention Slam Lock Installed

_____ (MDP-SL-AMP) Mortise Deadbolt Installed Model: **06441**

_____ (MDP-SL-1E74) Mortise Deadbolt Installed Model: **1E74**

_____ (MCP-SL-AMP) Mortise Cylinder Cam Lock Installed Model: **06431**

_____ (MCP-SL-1E74) Mortise Cylinder Cam Lock Installed Model (Blank Core to be Keyed on Site): **1E74***

STEP 4: SELECT OTHER OPTIONS AT ADDITIONAL COST:

_____ Installation of Customer-provided lock noted above.

_____ Optional Color Code: Select from below. Samples available through customer service.

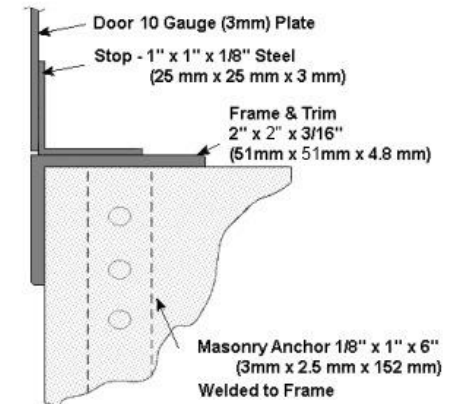
_____ Operational Key (Operates 1E74 Blank Construction Core)


_____ Control Key (For the removal of the 1E74 Blank Construction Core)

_____ Full Height Hinge



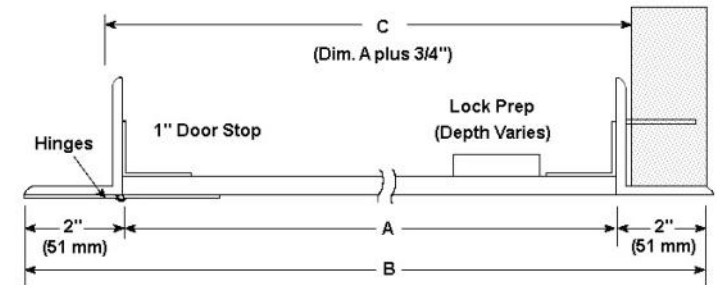
CONSTRUCTION DETAIL



	Distributor:	Quantity:
	Contractor:	Approved By:
	Model #:	Architect:
	Project:	Date:
PO Box 66738 #76520, Saint Louis, MO 63166 PH: 1-800-609-2917 FA: 1-888-626-2907 EMAIL: info@accessdoorsandpanels.com		12/20/18

SUBMITTAL: SECURITY ACCESS PANELS - MODEL SP

DOOR SIZES & WALL OPENINGS: MODEL SP							
QTY	A DOOR SIZE W X H	B Frame Dimension		C Opening Dimensions		SHIP WT APPROX	LATCH(E)S
	Inches (cm)	WIDTH	HEIGHT	WIDTH	HEIGHT		
	08 x 08 (20.3 x 20.3)	12 (30.5)	12 (30.5)	8¾ (22.2)	8¾ (22.2)	16 (7.3)	1
	10 x 10 (25.4 x 25.4)	14 (35.6)	14 (35.6)	10¾ (27.3)	10¾ (27.3)	20 (9.1)	1
	12 X 12 (30.5 X 30.5)	16 (40.6)	16 (40.6)	12¾ (32.4)	12¾ (32.4)	24 (10.9)	1
	14 x 14 (35.6 x 35.6)	18 (45.7)	18 (45.7)	14¾ (37.5)	14¾ (37.5)	29 (13.2)	1
	16 x 16 (40.6 x 40.6)	20 (50.8)	20 (50.8)	16¾ (42.5)	16¾ (42.5)	32 (14.5)	1
	18 x 18 (45.7 x 45.7)	22 (55.9)	22 (55.9)	18¾ (47.6)	18¾ (47.6)	38 (17.2)	1
	24 x 24 (61 x 61)	28 (71.1)	28 (71.1)	24¾ (62.9)	24¾ (62.9)	52 (23.6)	1 lock, 2 security screws
SIZES BELOW WALLS ONLY							
	24 x 36 (61 x 91.4)	28 (71.1)	40 (101.6)	24¾ (62.9)	36¾ (93.3)	72 (32.7)	1 lock, 6 security screws
	24 x 48 (61 x 121.9)	28 (71.1)	52 (132.1)	24¾ (62.9)	48¾ (123.8)	90 (40.9)	1 lock, 6 security screws



Optional Colors at Additional Cost - Samples Available			
G-Gray	R-Red	BK-Black/FB Flat	SI - Silver
S-Sand	AB-AMS Beige	SB-SC Flat Beige	B-Bronze

Detention Deadlock Prep (DDP)

One of 3 Lock Prep Choices Included In Pricing.

The door will be prepped for a right-handed, heavy-duty lock to be provided and installed by others.

The prep plate is factory welded, primed & painted as an integral part of the door.

Lock and mounting bolts are not included - please specify the manufacturer and model number of the lock to ensure compatibility.



Detention Deadlock Installed (DDI5010)

Right-handed, heavy-duty detention lock installed at the factory. The prep plate is factory welded, primed & painted as an integral part of the door.

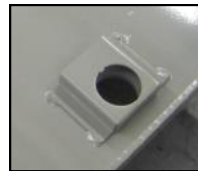
Model 5010 is a medium security deadbolt with a single piece, paracentric key cylinder in a high tensile strength, alloy steel case, keyed 1 side. The deadbolt is fabricated of 1-1/2" x 3/4" hot rolled steel with a 5/8" throw. All steel parts are plated for corrosion resistance. Dimensions 1-1/4" x 4-1/2" x 3". Please specify the number of keys to be ordered with this lock. Keys to be ordered separately. Pinned Torx bolts secure the lock to the door

Mortise Cylinder Cam Lock Prep (MCP)

One of 3 Lock Prep Choices Included In Pricing

This option includes a door which is prepped for a mortise cylinder and cam to be provided for and installed by others. Lock and mounting bolts are not included. The mortise cylinder must be 1-1/8" (2.9 cm) in diameter and the recommended cylinder length is 1-1/4" (3.2 cm). (A longer cylinder can be adapted to it by using a rose spacer) The cam must be 7/16" (1.11 cm) long, as measured from the edge of the cylinder to the tip of the cam.

Brass retaining ring #0646 for locks is not included. Verify if locks provided by others are equipped with them and order if necessary.



(DD15017) Detention Slam Lock Installed

Right-handed, heavy-duty detention lock installed at the factory. The prep plate is factory welded, primed & painted as an integral part of the door.

Model 5017 is a medium security slam latch with a stainless steel latchbolt with 1" x 7/16" throw. Slam-locks automatically when door is closed. Lock is constructed with a single piece, bronze alloy paracentric key cylinder, 5 tempered brass lever tumblers keyed one side (K1) in a high-tensile strength alloy steel case. All steel parts plated for corrosion resistance. Dimensions: 1 1/4" x 4" x 2 3/4". Please specify the number of keys to be ordered with this lock. Keys to be ordered separately. Pinned TORX bolts secure the lock to the door.

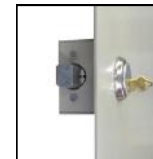
Detention Slam Lock Prep (DSP)

One of 3 Lock Prep Choices Included In Pricing

This option includes a door which is prepped for a detention slam latch to be provided and installed by others.

The prep plate is factory welded, primed & painted as an integral part of the door.

Lock and mounting bolts are not included. Please specify the manufacturer and model number of the lock to ensure compatibility.



Mortise Deadbolt Prep (MDP)

This option is available at additional cost and includes a lock mechanism which is prepped for a mortise cylinder and cam to be provided and installed by others. The prep includes a 2-1/2" x 3-1/2" x 1-3/4" case with installed Lori assembly with 1" x 5/8" throw.

Lock and mounting screws are not included. The mortise cylinder must be 1-1/8" (2.9 cm) in diameter and the recommended cylinder length is 1-1/4" (2.9 cm). (A longer cylinder can be adapted to it by using a rose spacer. The cam must be an Adams Rite cam.)



Mortise Deadbolt Installed (MDP-SL-AMP or MDP-SL-1E74)

Mortise deadbolt installed at the factory includes a 2-1/2" x 3-1/2" x 1-3/4" case welded to the door with installed Lori assembly with 1" x 5/8" throw.

Select from lock models 06431 (MDP-SL-AMP) (in satin chrome with Adams Rite cam and keys (drilled 6 pin, keyed 5 pin), or 1E74 (MDP-SL-1E74) with blank construction core to be keyed on site. Both locks are machined from solid brass bar stock. The mortise cylinder is 1-1/8" (2.9 cm) in diameter and the cylinder length is 1-1/4" (3.2 cm). Security Torx bolts secure the lock to the door

(MCP-SL-AMP or MCP-SL-1E74) Mortise Cylinder Cam Lock Installed

Cylinder lock with heavy-duty 7/16" cam installed at the factory. The prep plate is factory welded, primed & painted as an integral part of the door. Select from lock models 06431 (MP-SL-AMP) with 2 Yale Standard keys, or 1E74 (MP-SL-1E74) with a blank construction core to be keyed on site. Both locks are machined from solid brass bar stock. The mortise cylinder is 1-1/8" (2.9 cm) in diameter and the cylinder length is 1-1/4" (3.2 cm).