



SUBMITTAL/TECHNICAL DATA SHEET

SPECIFICATIONS

Access door shall be a watertight door. Door lid shall be fabricated with 1/4" aluminum diamond plate designed to support a H2O loading (without impact) with a maximum deflection of 1/150th of span. Frame shall be a 1/4" extruded aluminum channel-type frame with a 1/8" neoprene cushion and continuous anchor flange and a 1-1/2" drain coupling welded to the underside. Door shall open 90 degrees and automatically lock in that position with a stainless steel hold open arm with a red vinyl grip. Door lid shall be equipped with a recessed lift handle. Hinges shall be all stainless steel and attached with tamperproof fasteners. All hardware shall be grade 316 stainless steel. Doors shall have a mill finish with a bitumastic coating applied to the exterior of the frame to prevent hydrolysis with concrete. Doors shall be equipped with a stainless steel spring assist which shall provide a smooth and controlled operation when opening and closing door. Operation will not be affected by temperature. Door shall be equipped with a stainless steel slam lock with cover plug and removable handle. Door shall be furnished with a peel-off protective cover to protect finish from concrete splatter. Underside of lid shall have visibility tape applied for safety. Manufacturer shall guarantee material and workmanship for a period of ten years.

OPTIONS

- Skirting to depth of slab
- Fiberglass insulation
- Safety chains & posts

LOCK OPTIONS

- Staple for padlock
- Recessed hasp
- Keyed deadbolt lock
- Pentahead lock

SKU: KFD HD WT SPRG FLOOR ACCESS DOOR HINGED (WATERTIGHT)

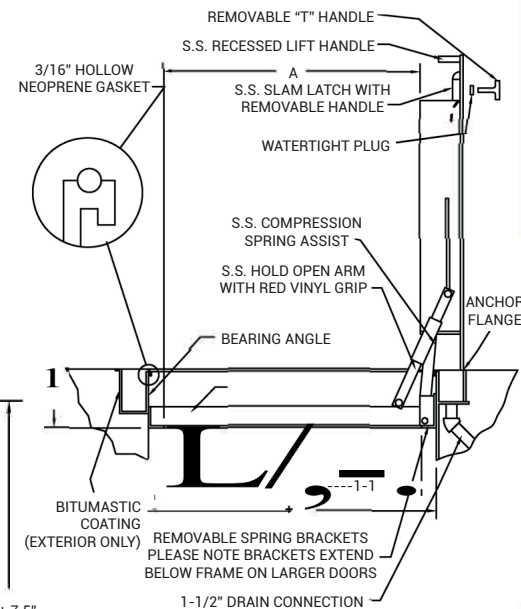
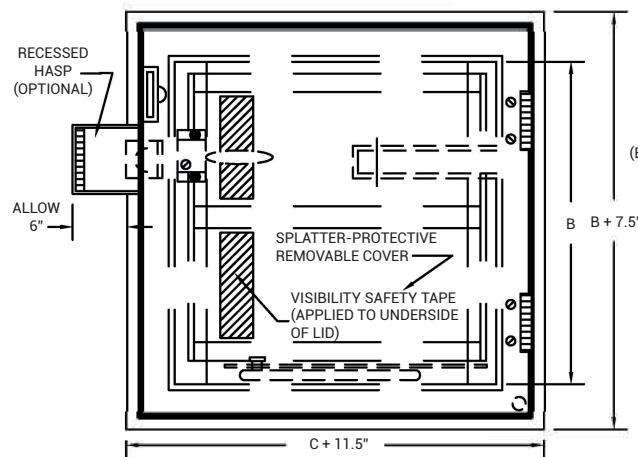


DIMENSIONS AND APPEARANCE

>> CLICK TO VIEW ADDITIONAL DETAILS AND PRICING <<

STANDARD SIZES:

| MODEL | A | B | C | D | WT. LBS |
|------------|-----|-----|-----|------|---------|
| FD2424AHNS | 24" | 24" | 24" | 5.5" | 45 lbs. |
| FD2430AHNS | 24" | 30" | 24" | 5.5" | 50 lbs. |
| FD2436AHNS | 24" | 36" | 24" | 5.5" | 55 lbs. |
| FD2442AHNS | 24" | 42" | 24" | 5.5" | 60 lbs. |
| FD3030AHNS | 30" | 30" | 31" | 6.5" | 55 lbs. |
| FD3036AHNS | 30" | 36" | 31" | 6.5" | 60 lbs. |
| FD3048AHNS | 30" | 48" | 31" | 6.5" | 70 lbs. |
| FD3636AHNS | 36" | 36" | 37" | 6.5" | 70 lbs. |
| FD3648AHNS | 36" | 48" | 37" | 6.5" | 85 lbs. |
| FD4242AHWS | 42" | 42" | 44" | 7.5" | 95 lbs. |



NOTE

ALUMINUM H2O DOORS
ARE FOR OFF-STREET
LOCATION ONLY.

For more detailed specifications
see submittal sheet

PROJECT DATA

Custom Sizes Available - Fast!

Scan  or 



To view Pricing and
Additional Product Info.

| | | | | |
|------------------------|--|---|---|---------|
| PROJECT NAME : | QTY | W | H | OPTIONS |
| ARCHITECT : | | | | |
| DEALER : | | | | |
| CONTRACTOR : | | | | |
| LOCATION : | SPECIAL INSTRUCTIONS : | | | |
| DATE : | | | | |
| TAGGING INSTRUCTIONS : | SUBMITTAL APPROVAL : (signature or stamp) | | | |

TELEPHONE:
1-888-457-1275
FAX:
1-888-626-2907



PO BOX 66738 #76520,
SAINT LOUIS, MO
63166-6738
USA



WEBSITE:
www.AccessDoorsAndPanels.com
E-MAIL:
info@AccessDoorsAndPanels.com



SUBMITTAL



TELEPHONE:
1-888-457-1275
FAX:
1-888-626-2907



PO BOX 66738 #76520,
SAINT LOUIS, MO
63166-6738
USA



WEBSITE:
www.AccessDoorsAndPanels.com
E-MAIL:
info@AccessDoorsAndPanels.com

**KFD HD
WT SPRG**

HEAVY DUTY WATERTIGHT FLOOR PANEL

